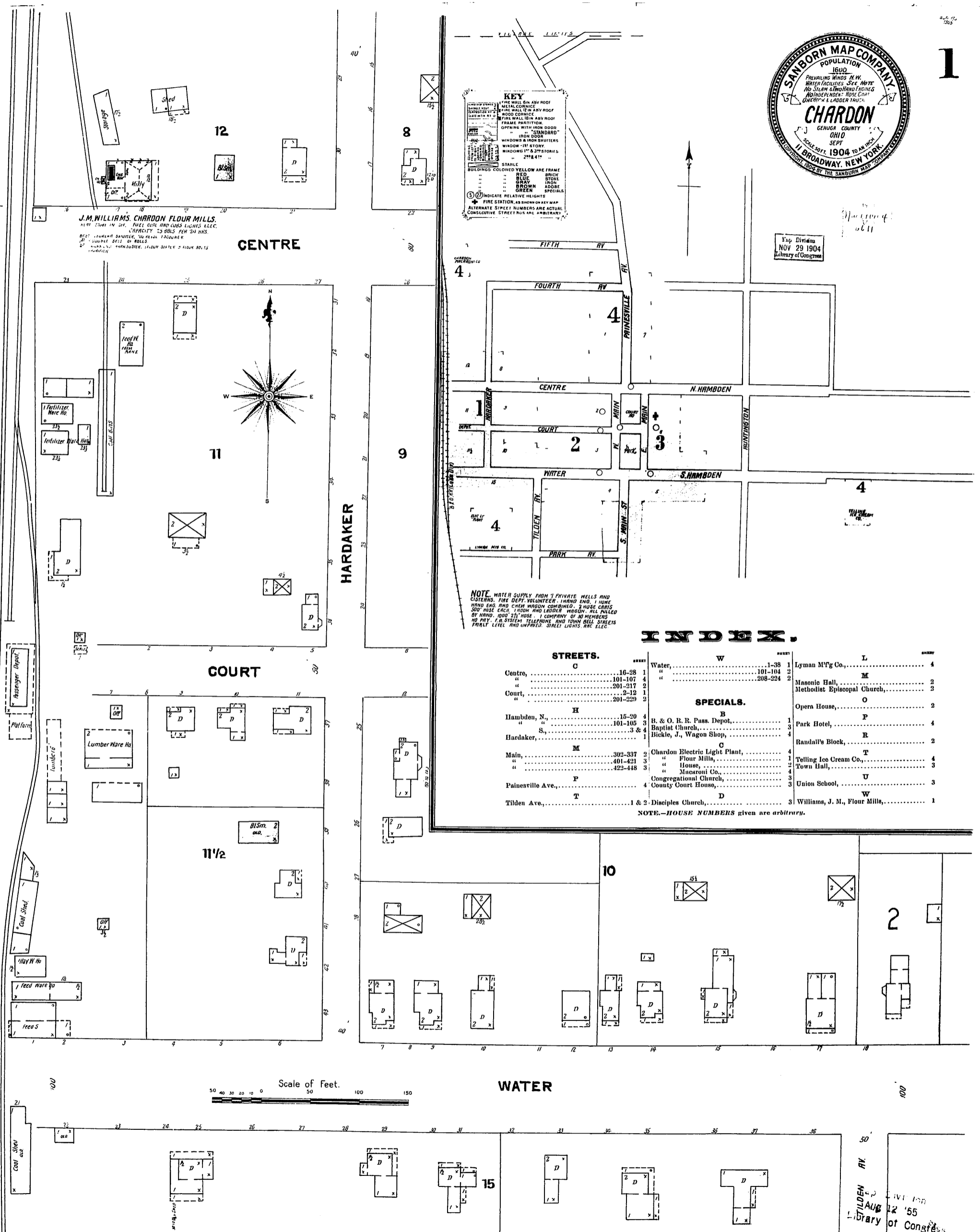




**KEY**  
FIRE WALL 5/8 IN. A.V. ROOF  
WOOD CORNICE  
FIRE WALL 1/2 IN. A.V. ROOF  
FRAME PARTITION  
OPENING WITH IRON DOOR  
STANDARD  
IRON DOOR  
WINDOWS & IRON SHUTTERS  
WINDOW - 18" STORIES  
WINDOWS 1" & 2 1/2" STORIES  
2" & 4" STORIES  
STAIRS  
BUILDINGS COLORED YELLOW ARE FRAME  
RED BRICK  
BLUE STONE  
GRAY IRON  
BROWN ASBESTOS  
GREEN SPECIALS  
⑤ INDICATE RELATIVE HEIGHTS  
FIRE STATION, AS SHOWN ON KEY MAP  
ALTERNATE STREET NUMBERS ARE ACTUAL  
CONSECUTIVE STREET NUMBERS ARE ARBITRARY

**J.M. WILLIAMS, CHARDON FLOUR MILLS.**  
WATER POWER AND SHIP. FLOUR CORN AND COBBLER'S BLEND.  
CAPACITY 25 BBL'S PER 24 HRS.  
BEST FLOURS SHIPPED TO ALL PORTS.  
20 COUNTRIES SPEC. OF BILLS  
MILLS & BUSHES, 11 DUM. SIXTY 2 FOUR BBL'S  
MILLS



**NOTE.** WATER SUPPLY FROM 7 PRIVATE WELLS AND  
CISTERNS. FIRE DEPT. VOLUNTEER, IRON ENG., 1 HORN  
HAND ENG. AND CHEM. WAGON COMBINED. 2 HOSE CARRIES  
300' HOSE EACH. IRON AND LADDER WAGON. ALL PULLED  
BY HAND. 1000' 2 1/2" HOSE. COMPANY OF 30 MEMBERS  
NO PAY. F.B. SYSTEM TELEPHONE AND TOWN BELL SYSTEMS  
PARTLY LATEL AND UNPAID. STREET LIGHTS, ARC ELEC.

**INDEX.**

STREETS.		SPECIALS.	
Centre, C	16-28	Water, W	1-38
"	101-107	"	101-104
"	201-217	"	208-224
Court, C	2-12	Lyman Mfg Co., L	4
"	201-229	Masonic Hall, M	2
Hambden, N., H	15-20	Methodist Episcopal Church, M	2
"	101-105	Opera House, O	2
Hardaker, H	3 & 4	Park Hotel, P	4
Main, M	302-337	Randall's Block, R	2
"	401-421	Telling Ice Cream Co., T	4
"	422-448	Town Hall, T	3
Painesville Ave., P	1 & 2	Union School, U	3
Tilden Ave., T	1 & 2	Williams, J. M., Flour Mills, W	1

NOTE.—HOUSE NUMBERS given are arbitrary.

TILDEN  
AUG 12 '55  
Library of Congress