

JULY 1911.  
**CHARDON**  
 OHIO.

2

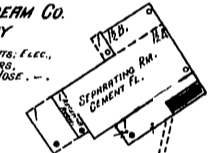
N O E X P O S U R E S.

N O E X P O S U R E S.

S. HAMBEN

NORTH (PAINESVILLE AV.)

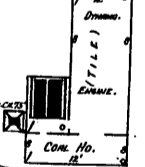
100' TO STABLE  
**TELLING ICE CREAM CO.**  
 CREAMERY  
 NO WATCHMAN,  
 HEAT: STEAM, LIGHTS: ELEC.,  
 3 FIRE EXTINGUISHERS,  
 3 1/2" HOSE, 1 1/2" HOSE.



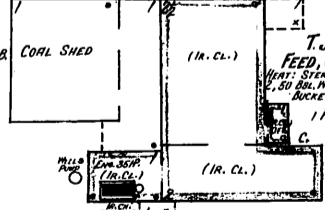
ICE HO.

VACANT BEYOND

**CHARDON ELECTRIC LIGHT PLANT**  
 FEEL: COAL, WASH WATER.



15  
 FEED & SALT WARE HO.  
 (CEMENT)  
 A. & O. R. R. (SIDING)



CEMETERY (PARK AV.)

CENTER

Scale of Feet.

N. HAMBEN

3

W. MAIN ST.

4

E. MAIN ST.

**A.J. RHODES**  
 NO WATCHMAN,  
 LIGHTS: ELEC., C.P.,  
 FUEL: WASTE, WELL WATER,  
 MACHINERY: 1 FEED GRINDER.

N O E X P O S U R E S.