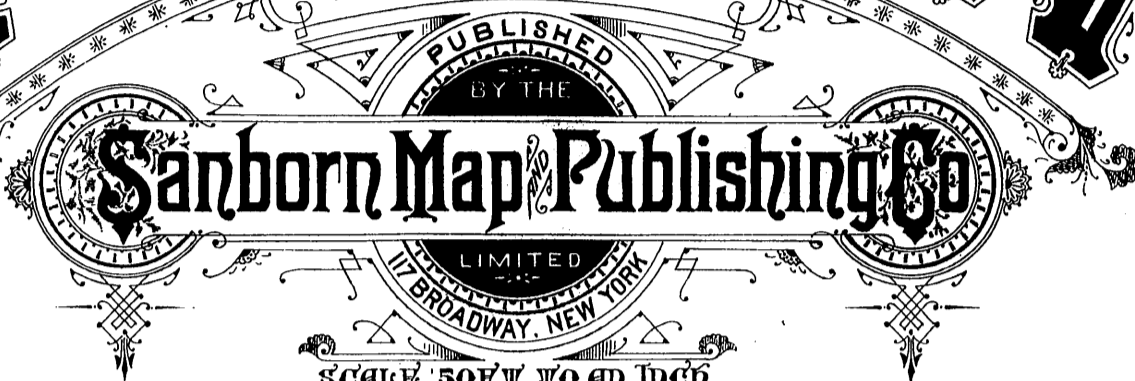


# AKRON

224th P



SCALE 50 FT TO AN INCH  
**SEP 1888**

COPYRIGHT, 1888 BY THE SANBORN MAP & PUBLISHING CO. LIMITED.

## INDEX.

STREETS.		SPECIALS.	
<b>A</b>	Abb, near Mill, 2	<b>A</b>	Academy of Music, 4
<b>B</b>	Bartges, 1-127 18	<b>B</b>	Alger Block, 23
<b>C</b>	Bates, 5	<b>C</b>	Allen, A. H., & Co., Wagon Shop, 4
<b>D</b>	Beach, 4	<b>D</b>	Alford, J. C., & Co., Flour Mills, 2
<b>E</b>	Bowery, 1-125 11	<b>E</b>	Allen, W. A., Wagon Works, 2
<b>F</b>	Broad, at East Akron, 16	<b>F</b>	Angue, J., Wagon Works, 17
<b>G</b>	Broadway, N., 100-185 7	<b>G</b>	Angue, J., Wagon Works, 17
<b>H</b>	Buckeye, 100-825 13	<b>G</b>	Antlman, Miller & Co., Lumber, 14
<b>I</b>	Canal, N., 2	<b>H</b>	Ayliffe Block, 3
<b>J</b>	Carroll, 100-135 14	<b>I</b>	Bachtel & Pontions, Broom Works, 14
<b>K</b>	Cascade, 6	<b>I</b>	Baker, McMillen & Co., Wood Works, 11
<b>L</b>	Cedar, E., 100-207 15	<b>J</b>	Baptist Church, 1
<b>M</b>	Center, E., 100-146 15	<b>J</b>	Baptist Church, 2
<b>N</b>	Cherry, 200-325 16	<b>J</b>	Bartlett, H., Planing Mill, 12
<b>O</b>	Chestrnut, E., 100-106 17	<b>K</b>	Beacon Printing, 20
<b>P</b>	Cedar, W., 100-114 17	<b>K</b>	Boder's Steam Laundry, 4
<b>Q</b>	Center, W., 200-325 16	<b>K</b>	Brodie & Schott, Pork Packing, 12
<b>R</b>	Cherry, 100-105 5	<b>L</b>	Brewster Coal Co., 17
<b>S</b>	Christy Church, Main to Broadway *13	<b>L</b>	Buchtel College, 11
<b>T</b>	Colburn, High to Summit *10	<b>L</b>	Buchtel Hotel, 11
<b>U</b>	College, S., South to Voris 20	<b>L</b>	Buckeye Mower & Reaper Works, 14
<b>V</b>	College, S., 100-130 *8	<b>L</b>	Budd, T. C., Mfg Co., 24
<b>W</b>	Exchange, E., 100-209 15	<b>M</b>	Burkhart, W., Brewery, 15
<b>X</b>	" 401-515 *14	<b>M</b>	Cahow Pump Co., 5
<b>Y</b>	" 100-140 *15	<b>M</b>	Cascade Flour Mills, 6
<b>Z</b>	" 101-225 *12	<b>M</b>	C. A. & C. R. R. Freight Shed, 10
	" at East Akron, 142-324 *16	<b>M</b>	Mathews Block, 2
		<b>M</b>	Merrill, E. H., & Co., Pottery, 2
		<b>M</b>	Meth. Episo. Church, at E. Akron, 22
		<b>M</b>	Miller Chain Co., 17
		<b>M</b>	Moody, J. A., Wagon Shop, 14
		<b>M</b>	Moss, O. O., Wagon Works, 23
		<b>M</b>	Continental Hotel, 4
		<b>M</b>	Cook, Fainbinks & Co., Pottery, 25
		<b>M</b>	Corner & Phanz, Filo Works, 14
		<b>M</b>	County Court House & Jail, 13
		<b>M</b>	Curry Comb Factory, 26
		<b>M</b>	Ohio Stone Ware Co., 20
		<b>M</b>	Wood's Block, 2
		<b>M</b>	McClolland, W. A., Saw & Planing Mill, 12
		<b>M</b>	McNeil, J. C., & Co., Boiler Works, 13
		<b>M</b>	Yogt, C., Carrigo Fact., 12
		<b>M</b>	Weary, Snyder & Wilcox Mfg Co., 4
		<b>M</b>	Webster, Champ & Lane Machine Co., 4
		<b>M</b>	Weeks, Cook & Weeks, Pottery, 25
		<b>M</b>	Whitlaw Block, 2
		<b>M</b>	Whitman & Barnes, Mfg Co., 14
		<b>M</b>	Whitmore, Robinson & Co., Stone Ware
		<b>M</b>	Manufactory, 23
		<b>M</b>	Windsor Hotel, 3
		<b>M</b>	Wingetzer, L., Pottery, 20
		<b>M</b>	Wood's Block, 2

\* Indicates only one side of Street shown.