

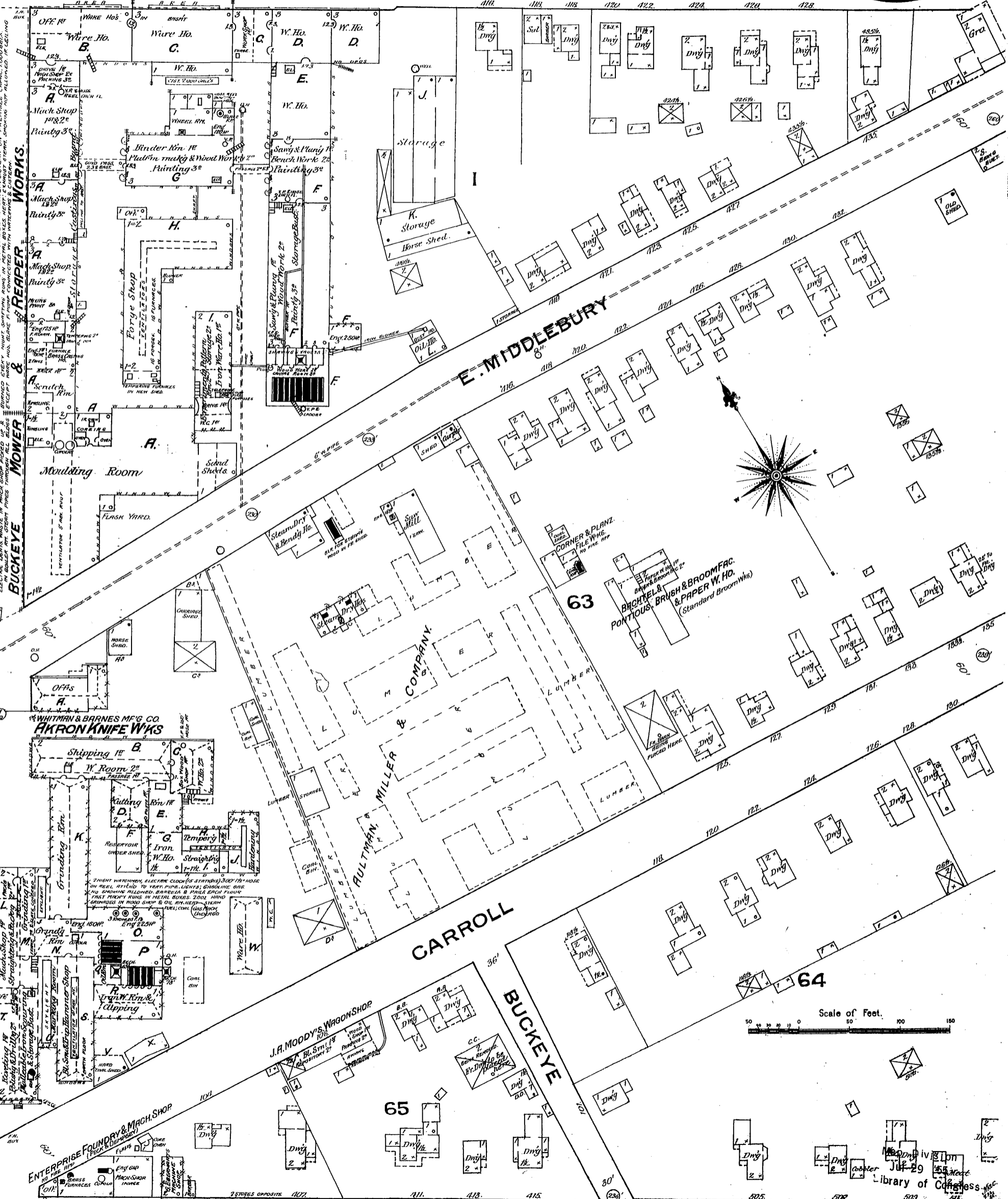
E. CENTER

E. MIDDLEBURY

GARROLL

BUCKEYE

E. EXCHANGE



BUCKEYE MOWER & REAPER WORKS

2 NIGHT WATCHMEN, 2 CLOCKS, 1000 LB. FIRE EXTINGUISHERS, STEAM CAN BE TURNED ON AT ANYTIME, COPIES OF PATENTS, COPIES, WORKS, CLEARING WORKS, WOODS, IN MACH. SHOP, PILED UP, AS BURNED, CHEAP, MUST SHUTTING RUNS IN METAL BOXES, HEAT, LUMBER, STAMP, SPENDING NOT ALLOWED, IN BUILDING, EXCEPT NIGHT WATCHMEN, MUST HAVE FIRE CONNECTIONS WITH INTERIOR & EXTERIOR.

Plattinon 1/2" gauge R. R. Trucks
 2 NIGHT WATCHMEN, 2 CLOCKS, 1000 LB. FIRE EXTINGUISHERS, STEAM CAN BE TURNED ON AT ANYTIME, COPIES OF PATENTS, COPIES, WORKS, CLEARING WORKS, WOODS, IN MACH. SHOP, PILED UP, AS BURNED, CHEAP, MUST SHUTTING RUNS IN METAL BOXES, HEAT, LUMBER, STAMP, SPENDING NOT ALLOWED, IN BUILDING, EXCEPT NIGHT WATCHMEN, MUST HAVE FIRE CONNECTIONS WITH INTERIOR & EXTERIOR.

WHITMAN & BARNES MFG CO. AKRON KNIFE WORKS

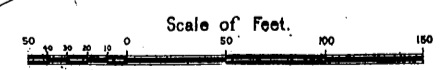
Shipping Rm.
 W. Room 2nd
 Cutting Rm.
 Iron
 Straightening
 Reservoir under shed

J.A. MOODY'S WAGON SHOP

2 NIGHT WATCHMEN, ELECTRIC CLOCK (IS STANDING) 300' 1/2" HOSE ON REEL, APPROX. 10 YEAR PIPE, LIGHTS, GASOLINE OIL, NO. 2, SMOKE, ALLOWED, BARRELS & PAILS, EACH FLOOR, FIRST FLOOR RUNS IN METAL BOXES, 2000' HAND CARRAIAGES IN WOOD SHOP & OIL RY. HELD, STEAM ENGINE, 200' COAL, (GAS) RY. (LUMBER)

ENTERPRISE FOUNDRY & MACH. SHOP

2 STORES OPPOSITE 107



Library of Congress
 Acquired by
 JUL 29 1886