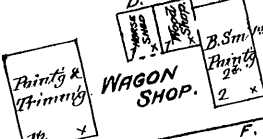


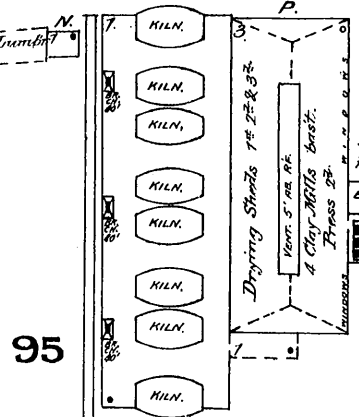
SEP. 1886
AKRON
OHIO

Vacant.

96



NORTH



95

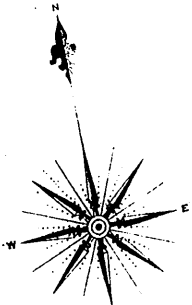
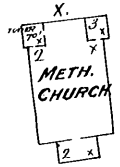
GEO. P. SPERRY.
SEWER PIPE WORKS.

RUNS DAY & NIGHT.
BARRELS & PILLS IN EACH KILN SHED.
HEAT: STEAM.
FUEL: COAL.
LIGHT: KEROSENE.

WEST

SOUTH

94



At Tallmadge,
5 Miles E. of Akron.

EXPOSURE

70

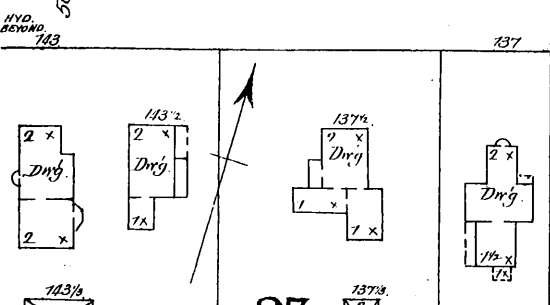
Park.

Park.

FR. DRG. BEYOND.

DETACHED FRAME DWGS BEYOND

ASH ST.

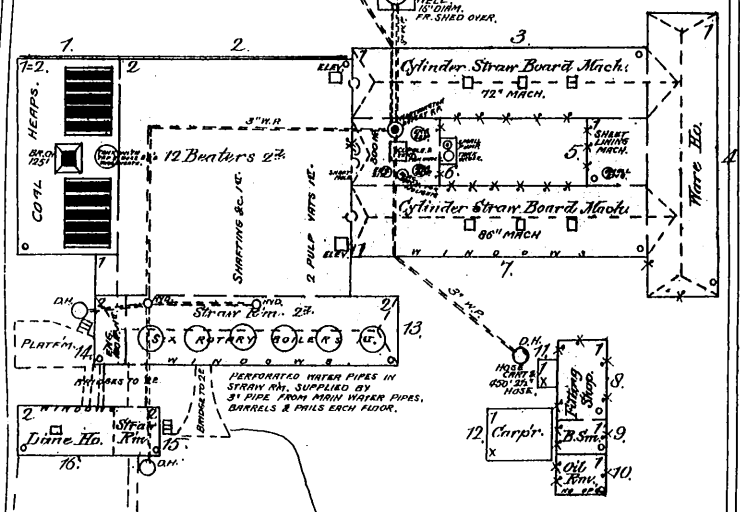


97

THE ENTERPRISE MFG CO.
E. F. PFLUEGER & CO.

RUNS NIGHT & DAY.
NIGHT WATCHMAN &
AMERICAN WATCHMAN'S TIME DETECTOR.
40 BOILERS 60 IN EACH.
FIRE PRESSURE 150 LBS.
HEAT: STEAM & STOVE IN OFF.
FUEL: COAL.
LIGHT: EDISON'S INCANDESCENT ELECTRIC.
BARRELS & PILLS EACH FLOOR OF ROTARY BOILER.
HAND GRENADES DISTRIBUTED.

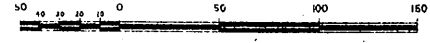
THE PORTAGE STRAW BOARD CO.



RUNS NIGHT & DAY.
NIGHT WATCHMAN &
AMERICAN WATCHMAN'S TIME DETECTOR.
40 BOILERS 60 IN EACH.
FIRE PRESSURE 150 LBS.
HEAT: STEAM & STOVE IN OFF.
FUEL: COAL.
LIGHT: EDISON'S INCANDESCENT ELECTRIC.
BARRELS & PILLS EACH FLOOR OF ROTARY BOILER.
HAND GRENADES DISTRIBUTED.

5 Miles S. of Akron.

Scale of Feet.



Map. Division
Jul 29 '55
Library of Congress

EXPOSURE

70

Stray Tracks.