

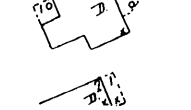
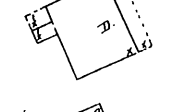
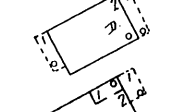
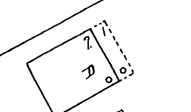
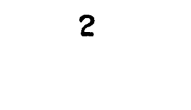
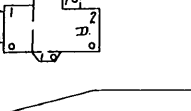
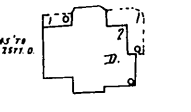
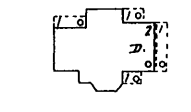
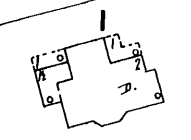
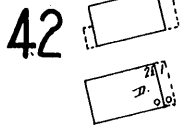
81

FRANKLIN ST.

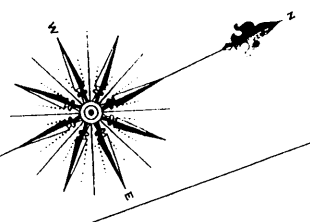
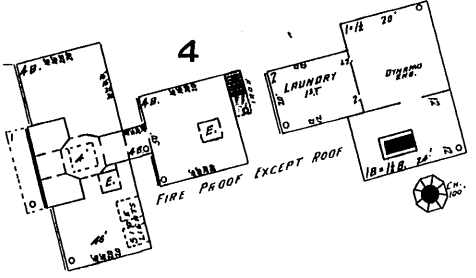
42

U

BOULEVARD



AKRON CITY HOSPITAL  
HEAT STEAM, LIGHTS ELECTRIC.

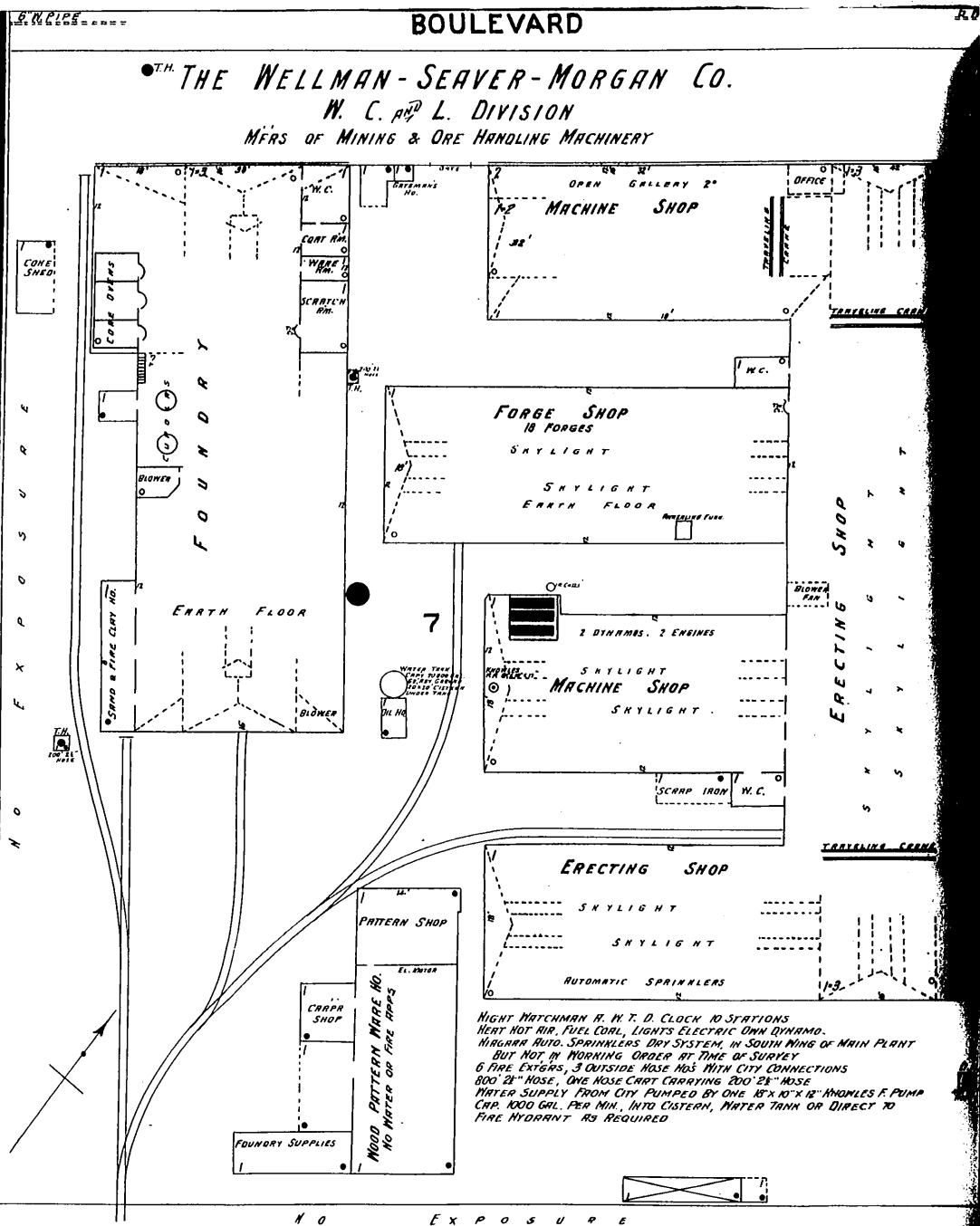


ARCH

E. MARKET

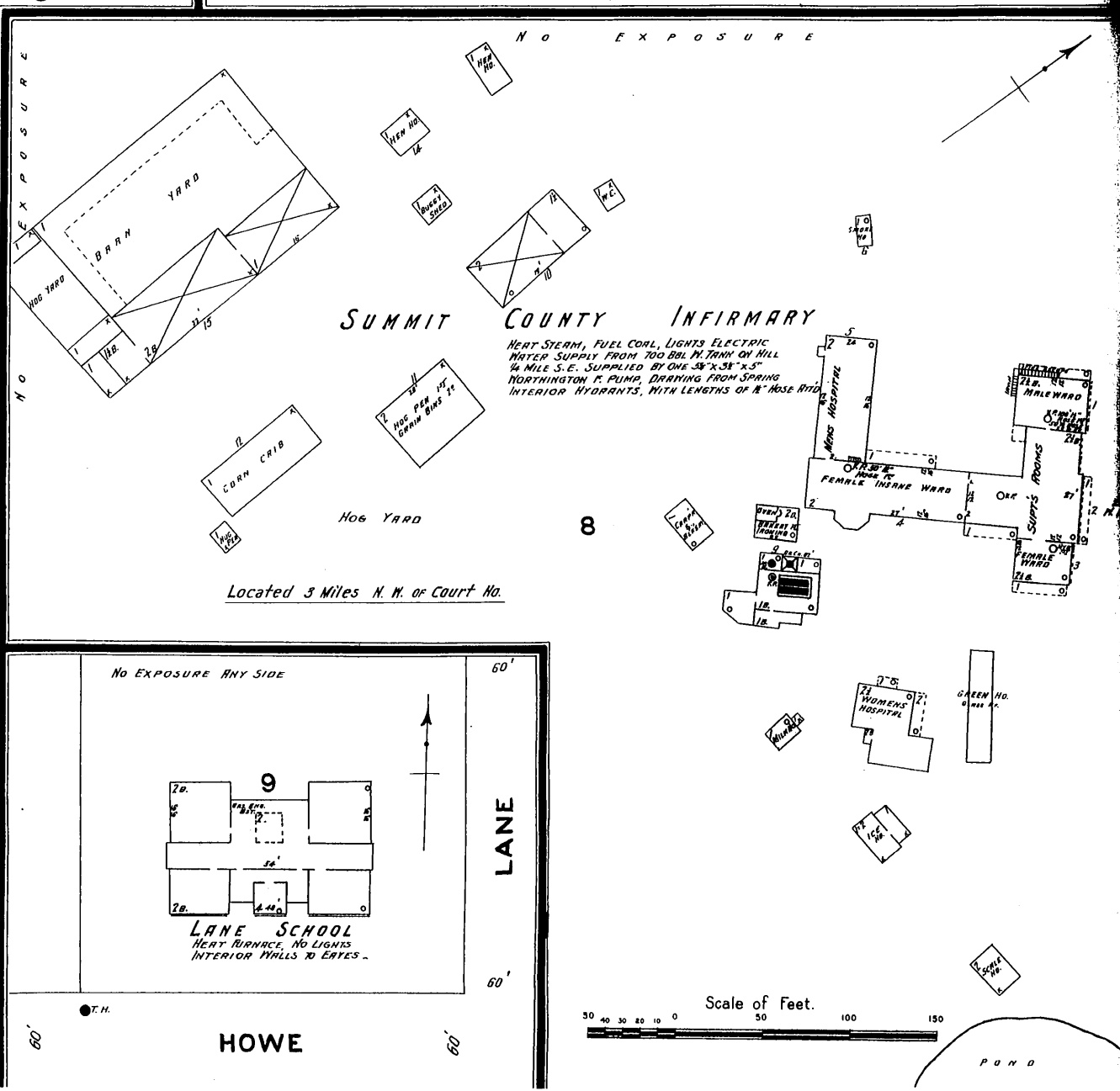
BROWN

ADAMS



THE WELLMAN-SEEVER-MORGAN CO.  
W. C. & L. DIVISION  
MFRS OF MINING & ORE HANDLING MACHINERY

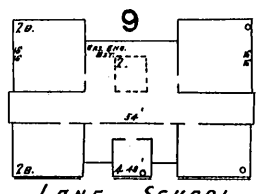
NIGHT WATCHMAN R. H. T. D. CLOCK 10 STATIONS  
HEAT HOT AIR, FUEL COAL, LIGHTS ELECTRIC OWN DYNAMO.  
MILBURN AUTO. SPRINKLERS DRY SYSTEM IN SOUTH WING OF MAIN PLANT  
BUT NOT IN ADJOINING ORDER AT TIME OF SURVEY  
6 FIRE EXITS, 3 OUTSIDE HOSE HOLES WITH CITY CONNECTIONS  
800' 2" HOSE, ONE HOSE CART CARRYING 200' 2" HOSE  
WATER SUPPLY FROM CITY PUMPED BY ONE 18" X 12" ANOMOLUS PUMP  
CAP. 1000 GAL. PER MIN. INTO CISTERN, WATER TANK OR DIRECT TO  
FIRE HYDRANT AS REQUIRED



SUMMIT COUNTY INFIRMARY  
HEAT STEAM, FUEL COAL, LIGHTS ELECTRIC  
WATER SUPPLY FROM 700 GAL. TANK ON HILL  
1/4 MILE S.E. SUPPLIED BY ONE 8" X 3" X 5"  
NORTHINGTON P. PUMP, DRAWING FROM SPRING  
INTERIOR HYDRANTS, WITH LENGTHS OF 8' HOSE RFD.

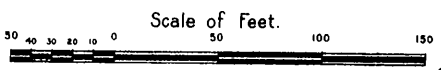
Located 3 Miles N.W. of Court No.

No Exposure Any Side



LANE SCHOOL  
HEAT RURNACE, NO LIGHTS  
INTERIOR WALLS TO EYES.

HOWE



POND