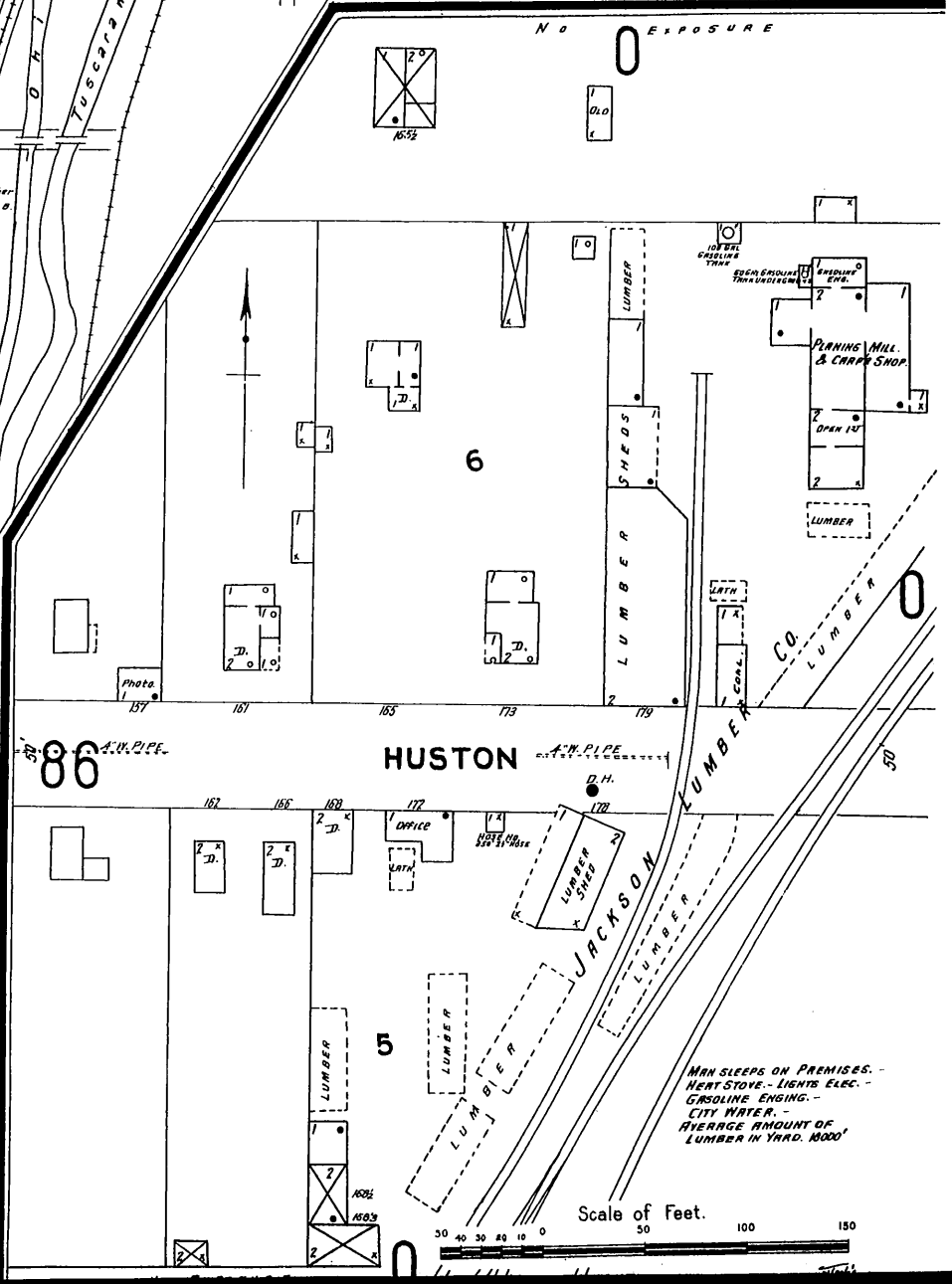


Population 7,500 -
Prevailing winds N & S -
Grades level - Electric lighting -
STREETS PAVED - Tuscarawas Av from C.R. & C.R. tracks to 7th St -
2nd St from Baird Av to Hopocan Av -
WATER WORKS - Municipal ownership - Source of supply, Ohio Canal.
direct pumping pressure -
Primary pressure - 2 Worthington pumps of the Diamond Match Co.
size of each pump is 16" x 10" x 12" combined capacity is 2000 gals. per min -
Pressure from this source ranges from 40 to 110 lbs. as occasion demands -
Auxiliary or Emergency pressure - 2 Worthington Pumps of Sterling Boiler Co. these pumps
are similar in size and capacity to those above noted -
2 Synder Hughes pumps of American Sewer Pipe Co -
2 Smith-Vaile pumps, each 8" x 5" x 10" and one Worthington Pump 12" x 17" x 13" x 15"
of American Steam-Boiler Co -
9 Miles of water mains in size 4" to 8" - Average daily consumption 1/4 Million gals -
FIRE DEPT. - Volunteer, 20 members are paid for active services -
Apparatus, 7 Hose Reels each carrying 500' 2 1/2" Fabric Hose, each Hose
Cart is separately housed and conveniently located -
Hook and Ladder Truck - No Chemical Exting. -
No Hand or Steam Engines -
A New \$20,000 Pumping Station to draw from Artesian wells
now in course of construction -
\$15,000 to be devoted to the building and equipment of a Fire Eng. No.
before close of year 1904 -



MAN SLEEPS ON PREMISES -
HEAT STOVE - LIGHTS ELEC. -
GASOLINE ENGIN. -
CITY WATER -
AVERAGE AMOUNT OF
LUMBER IN YARD, 1000'

Scale of Feet.
0 50 100 150