

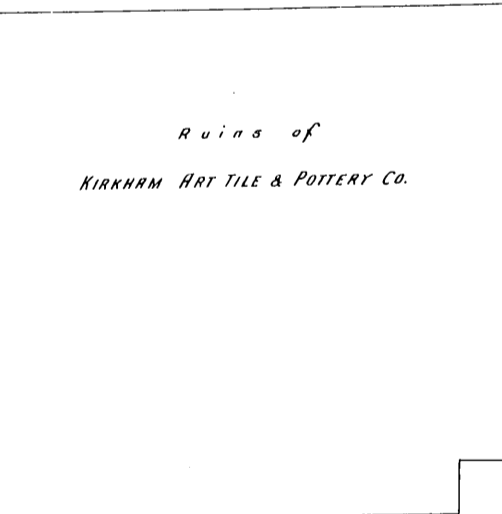
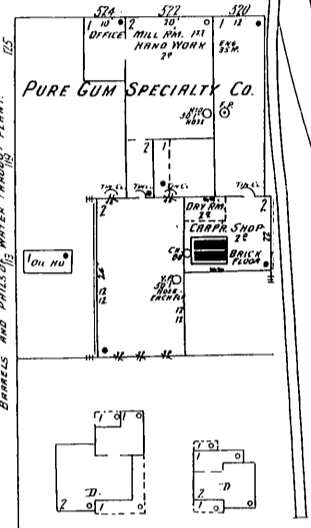
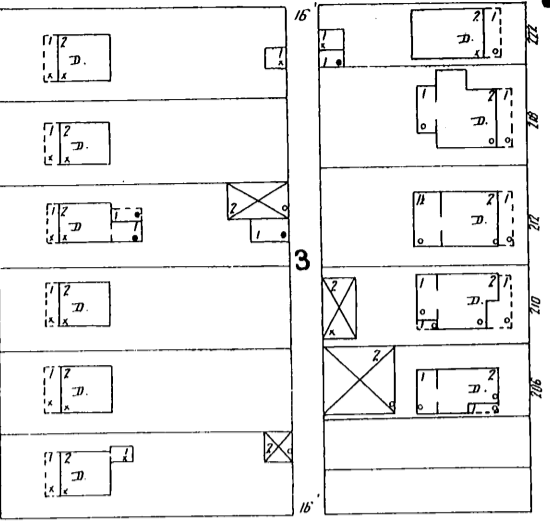
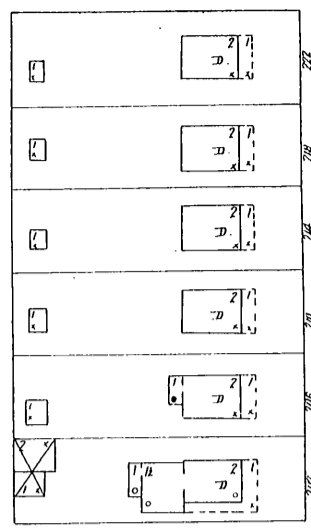
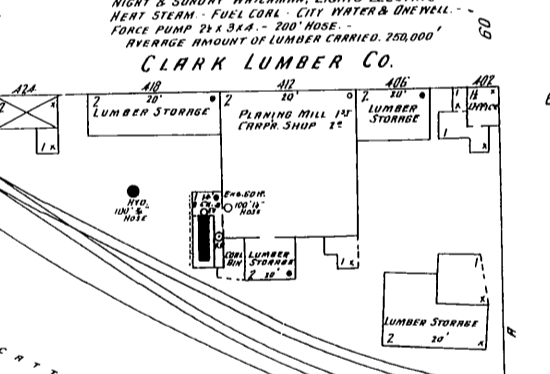
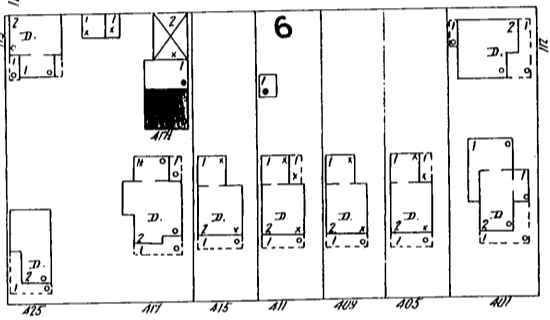
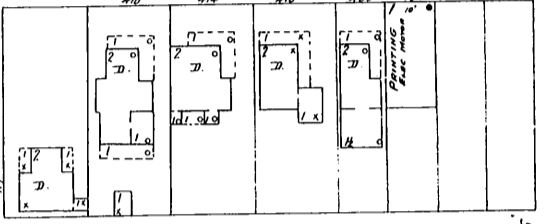
Ruins of KIRKHAM ART TILE & POTTERY CO.

CLARK LUMBER CO.

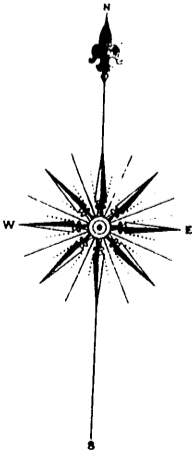
NIGHT & SUNDAY WATCHMAN, LIGHTS ELECTRIC, HEAT STEAM - FUEL COAL - CITY WATER & ONE WELL - FORCE PUMP 24 X 3 1/2 A. - 200' HOSE - AVERAGE AMOUNT OF LUMBER CARRIED 250,000'

PURE GUM SPECIALTY CO. NIGHT & SUNDAY WATCHMAN, ROFFER CLOCK, 55 STATIONS, HOODLY ROOMS, ELECTRIC HEAT STEAM, 300' HOSE, 300' TUBS, 1/2" WISSARD PUMP, 8 EXIGERS, BRACKETS AND PHASIS, WATER THROUGH PLANT.

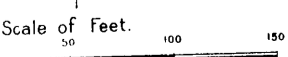
N.O.T. CO. CAR. NO.



SCATTERED LUMBER PILES



Grove of Large Trees.



NO EXPOSURE

ROBINSON AV.

FORD AV.