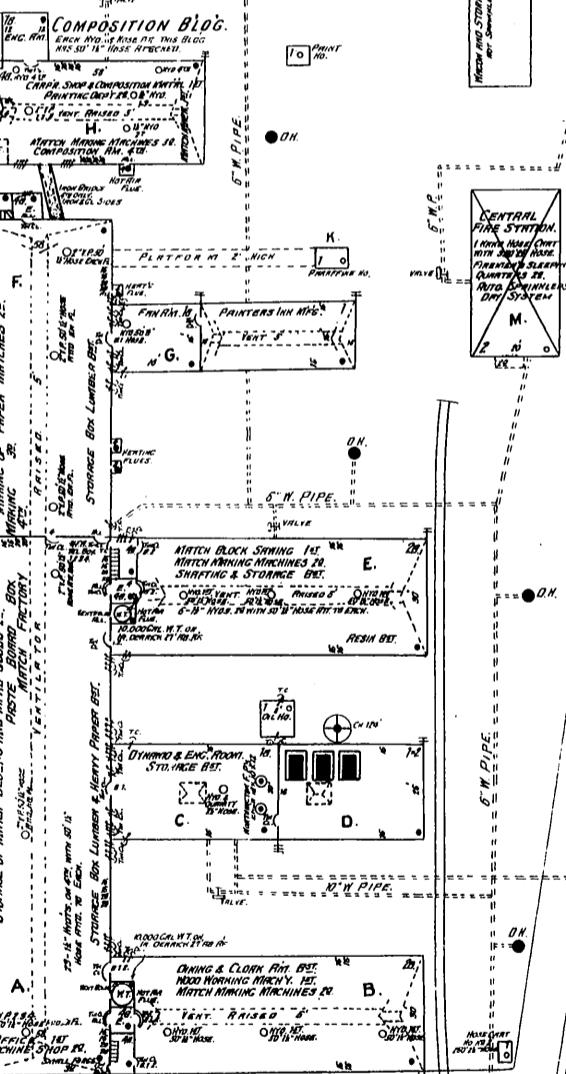


THE DIAMOND MATCH CO. BARBERTON FACTORY



Scale of Feet.

0 50 100 150

“LUMBER YARDS” - AVERAGE AMOUNT CARRIED IN YARDS “A, B, C” IS APPROX 100,000 FT³ OR ABOUT 1,000,000 PER YARD. THE HEIGHTS OF PILES Varies, BUT WHEN YARDS ARE FULL THE AVERAGE HEIGHT IS 14 FEET.

“BUILDINGS” - SLOW BURNING WOOD CONSTRUCTION, ALL FLOORS EXCEPT THE 4TH FLOOR OF MAIN BLDG. ARE 2x12 CLASSE CUM CONCRETE, SET ON MASONRY WALLS. 2x8 STUFF USED ON 4TH FL. OF MAIN BLDG. OVER TOP OF THIS ON ALL FLOORS, IS SHEET ROASTER. OVER TOP OF ROASTERS IS MATCHED WOOD FLOORING. FLOORS REST ON 12x16 JOISTS AT 6 CENTERS. FLOORS SUPPORTED - 1ST BY BRICK PIERS IN BASEMENT. 2ND BY 12x14 POSTS - 3RD BY 12x14 POSTS - 4TH BY 12x14 POSTS - 5TH BY 12x14 POSTS. ALL INTERIOR SPACINGS IN BRICK OR STONE WALLS ARE PROTECTED BY 1/2 IN. CLAD PINE DOORS BUILT ACCORDING TO SPECIFICATIONS OF WESTERN FIREWORK ASSN AND HUNG ON METAL SLIDES, BEING HELD OPEN BY WEIGHTS ON FIBRILE LINKS. ALL WALLS ARE 2x PLASTERED, IN ADDITION TO THICKNESS OF CONCRETE. ALL PORTIONS OF BLDGS. AND PREMISES ARE KEPT IN FIRST CLASS CONDITION.

EMPLOY 450 MEN AND BOYS AND 150 WOMEN AND GIRLS
7 1/2 SE NIGHT AND 3 SUNDAY WATCHMEN, REPORTING EQUALLY TO M. D. T. BOKES AND 42 STATIONS ON A M. T. D. THESE TWO SYSTEMS SO ARRANGED AS TO BE CHECK ON ONE ANOTHER.

FUEL COAL AND GENERAL WASTE. ALL WASTE FROM WOODWORKING MACHINERY AND MATCH MAKING ARE CONVEYED DIRECTLY TO BOLLER BURNERS, THROUGH METAL PIPES BY CYCLONE DUST CONVEYORS. HERE, HOT AIR IS DRAWN OUT, FROM FURNACE, HOT WATER IN CONTACT WITH LIGHT, INCANDESCENT, ELECTRIC, THROUGHOUT EXCEPT IN FURNACE, AND MACHINE SHOP ON 3RD FLOOR WHERE ENCLOSED ARCS ARE USED. OWN DYNAMO.

WATER SUPPLY - SEVEN 7 1/2 IN. DIAMETER MAINS ON PREMISES DURING DAY AND SIX SLEEP ON PREMISES AT NIGHT. SEVEN HAND HOSE CHAINS DISTRIBUTED ABOUT PLANT. SIX CHAINS CARRY END OF 2 1/2 IN. HOSE EACH CHAIN IN CENTRAL FIRE STATION CARRIES 350 FT. HOSE, ALSO A QUANTITY OF 1 1/2 IN. HOSE IN ENGINE ROOM. 2 IN. HOSE CHAINS OF ENGINEERING DEPT. CAN BE CALLED INTO IMMEDIATE USE IF NEEDED. FIVE FIRE ALARM BONES IN MAIN BLDG. FIVE IN THE COMPOSITION BLDG. 14 IN CITE NO. ONE IN SOUTH TWO BLOCKS SOUTH. EACH ONE CONNECTS WITH CENTRAL FIRE STATION ALARM SYSTEM. 2x400 FT. 1 1/2 IN. HOSE LAYED MAIN BLDGS. IN 50' LENGTHS AND ALL IN GOOD CONDITION. BOLS OF WATER AND PAILS DISTRIBUTED.

STIRLING AV.

AV.

