

97 103

104

PROSPECT

IRON BRIDGE  
TO RIV WATER

# CUYAHOGA FALLS SUMMIT CO. OHIO

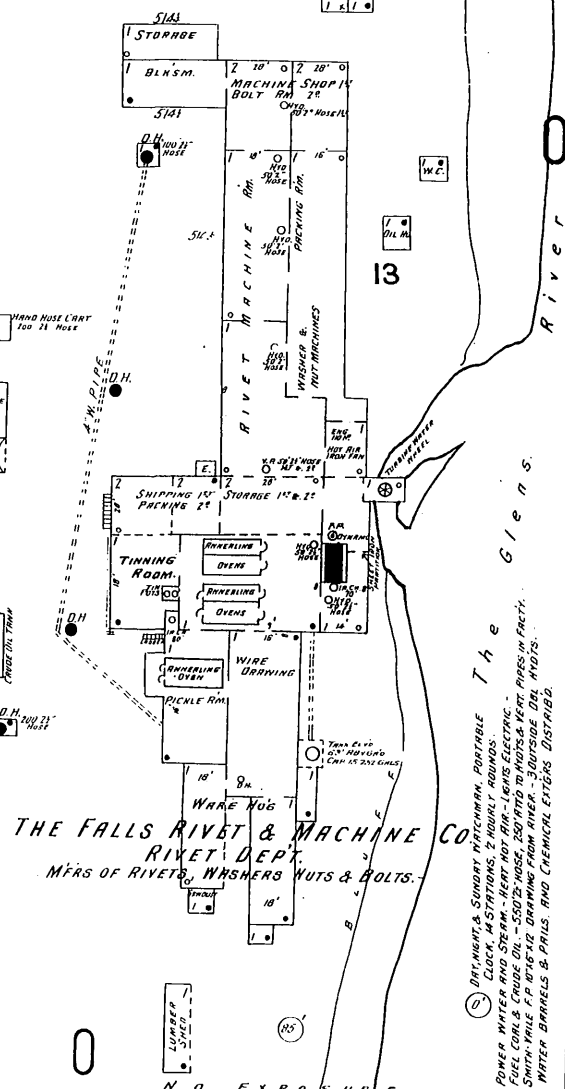
Population 3400  
 Prevailing Winds S.W.  
 Grades easy - Electric lighting -  
 Front Street paved in main part of town.  
 Water Facilities - Gravity pressure from  
 stand pipe, capacity 100,000 gals. and direct  
 pump pressure. One Snyder-Hughes  
 duplex pump capacity 34 Million gals per  
 water from five 8' Artesian wells, 15' deep  
 7 Miles of distributing mains from 4" to  
 16" double hydrants - Domestic pressure  
 Fire pressure 100 to 140 lbs -  
 FIRE DEPT - Volunteer, 27 Members -  
 180' 7" Standard Hose in good condition.  
 Twelve 3 gal. Steam fire engines -  
 Hook & Ladder Truck - 2 Hose Carts -  
 Apparatus all located in City Hall, cor. of  
 Front & Broad Sts -  
 Bell & Whistle fire alarm system -



GLEN NO. 12

SACKETT (POOL)

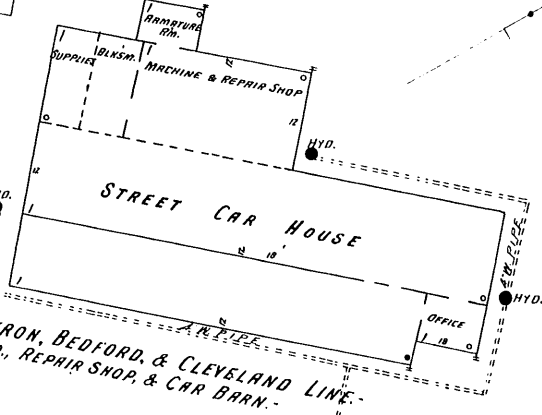
FRONT



**THE FALLS RIVET & MACHINE CO.**  
 RIVET DEPT.  
 MFRS OF RIVETS, WASHERS NUTS & BOLTS.

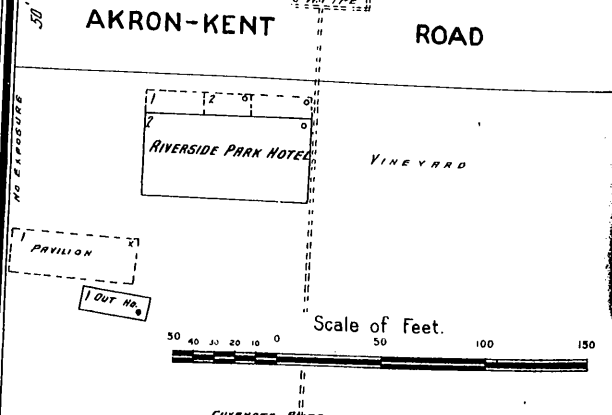
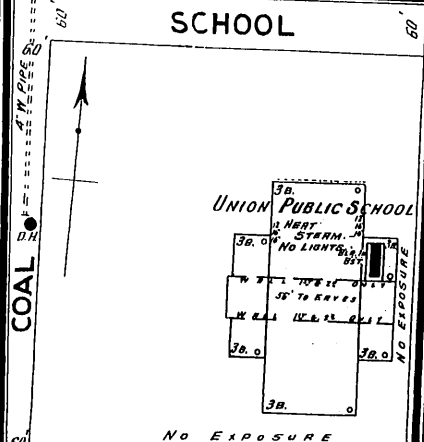
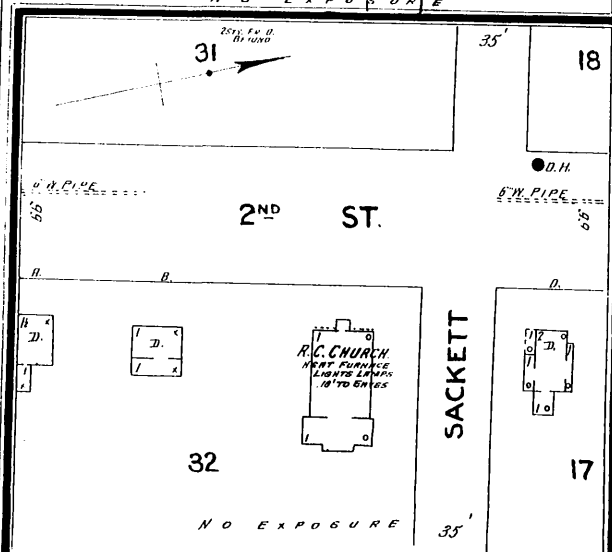
DAY, NIGHT & SUNDAY MATCHMAKING. PORTABLE  
 CLOCK, MASTATIONS, 2 HOURLY ROUNDS.  
 POWER WHEEL AND STEAM - HEAT NOT RAN - LEADS ELECTRIC.  
 FUEL COAL - HEAT FROM RIVER TO BOILER KEPT PIPES IN FACTORY.  
 SMITH-PYLE P.P. WATER DRAWING FROM RIVER TO BOILER.  
 WATER BARRELS B-D-RIS. AND CHEMICAL EXTING. DISTRI. B.

**N. O. T. & L. CO. - AKRON, BEDFORD, & CLEVELAND LINE.**  
 POWER HO., REPAIR SHOP, & CAR BARN.



MEN ON DUTY NIGHT AND DAY -  
 HEAT STOVE - FUEL COAL - LEADS ELECTRIC -  
 DAVIDSON FORCE PUMP DRAWING FROM  
 CUYAHOGA RIVER (6.5' - 12' - 1')  
 DIRECT PRESSURE OF 100 LBS. -  
 3 OUTSIDE HYDRANTS - 600' 2" HOSE.

Located 1 1/2 Miles N. of City Hall.



Scale of Feet.

