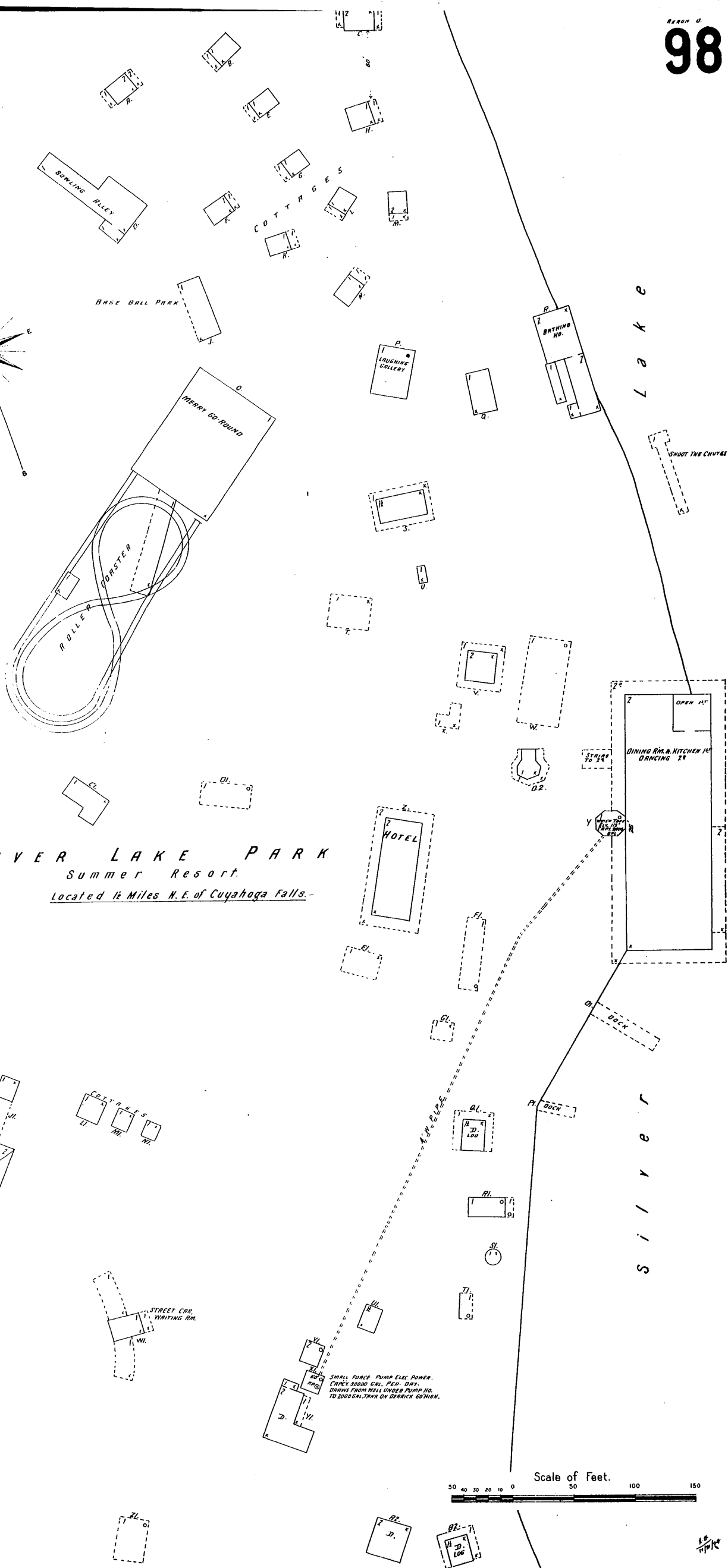
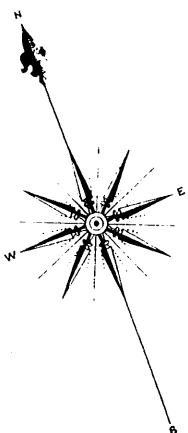
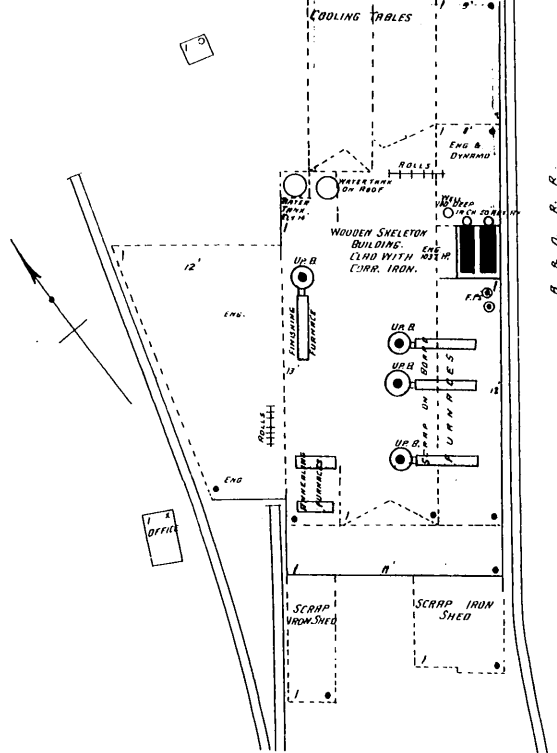


# CUYAHOGA FALLS

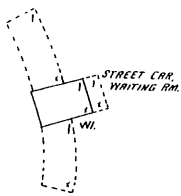
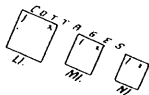
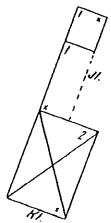
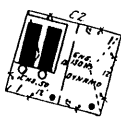
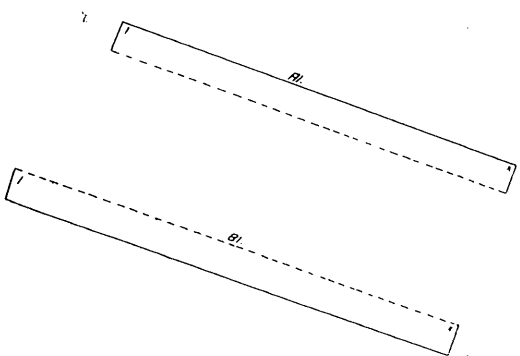
## THE INDEPENDENT ROLLING MILL CO.

NEAT WATCHMAN, MAKING HOURLY REPORTS  
 TO 8 STATIONS OF AMER. W. T. O. CLOCK  
 NO HEATING - LIGHTS ELECTRIC (OWN DYNAMO)  
 FUEL COAL - 100' TO HOSE - 4 ACME FIRE EXTING.  
 1 LINDLAW; 2 QUINN - GORDON PUMPS 4 1/2' 4 1/2' EACH.  
 WATER FROM CUYAHOGA RIVER. 100' W. OF PLANT.

NO EXPOSURE ANY SIDE.

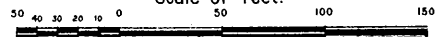


## SILVER LAKE PARK Summer Resort. Located 1 1/2 Miles N.E. of Cuyahoga Falls.

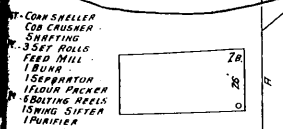


SMALL FORCE PUMP ELE. POWER.  
 CHECK 3000 GAL. PER DAY.  
 DRAWS FROM WELL UNDER PUMP NO.  
 TO 2000 GAL. TANK ON BENCH 60 HIGH.

Scale of Feet.



NO WATCHMAN. TO HAVE ELECTRIC LIGHTS  
 FUEL COAL. NO FIRE APPS.  
 WATER POWER. TO HAVE UP BLIN. WAT.  
 TO HAVE STEAM HEAT.



## RANSOM & ROMWEBER FLOUR MILL.

NO EXPOSURE ANY SIDE.

BROOK

STATE ROAD (NEW BRIDGE)

Located 1/2 Miles N.W.  
 of Cuyahoga Falls.