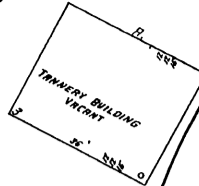
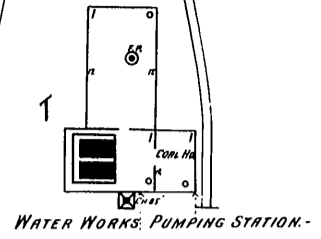


CUYAHOGA FALLS



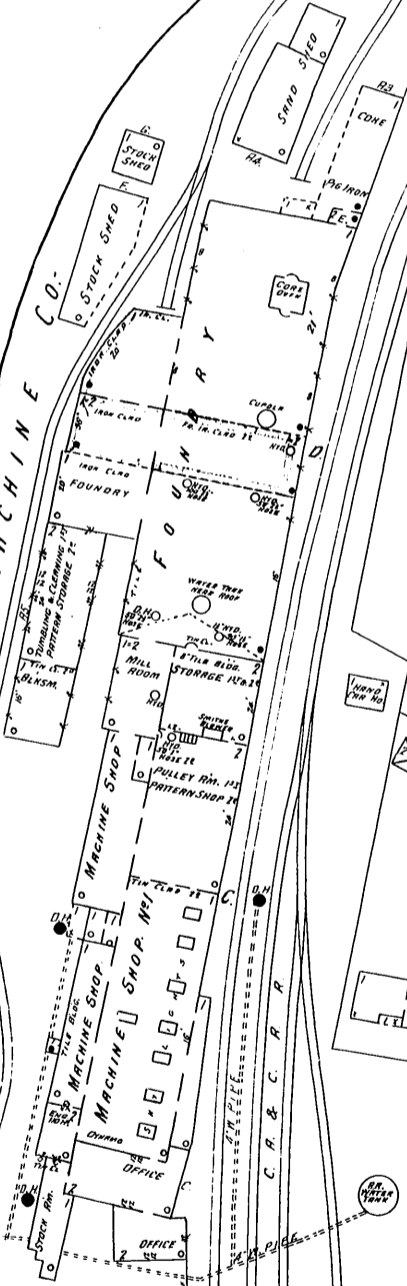
THE F. R. & M. CO.
DRY NIGHT AND SUNDAY WATCHMAN -
PORTABLE CLOCK 12 STATIONS, HOURLY ROUNDS
POWER WATER AND STEAM - HEAT HOT AIR - SMITH SYSTEM
FUEL COAL - LIGHTS ELECTRIC -
NORTHINGTON SIMPLE DUPLEX FORCE PUMP 18" X 12" X 12"
WELL
DRAWING FROM CUYAHOGA RIVER - 600' 2" HOSE
100' HOSE - 50' 2" HOSE ATD IN FOUNDRY
50' HOSE ATD IN PATTERN SHOP
WATER BARRELS AND PAILS & CHEMICALS
THE EXTENS DISTO.
2 HAND HOSE CARTS WITH 200' 2" HOSE ON EACH
BRICK FLOOR IN BOILER ROOM

WETMORE

FRONT

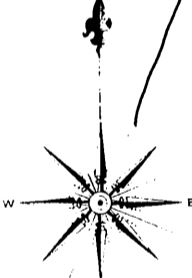
CUYAHOGA RIVER

THE FALLS RIVET & MACHINE CO.



GRAND

E. FRONT



HOME & CO.
FLOUR, ROLLING MILLS & PLANING MILL
DRY AND SUNDAY WATCHMAN
PORTABLE CLOCK 12 STATIONS, HOURLY ROUNDS
POWER WATER AND STEAM - HEAT HOT AIR - SMITH SYSTEM
FUEL COAL - LIGHTS ELECTRIC -
NORTHINGTON SIMPLE DUPLEX FORCE PUMP 18" X 12" X 12"
WELL
DRAWING FROM CUYAHOGA RIVER - 600' 2" HOSE
100' HOSE - 50' 2" HOSE ATD IN FOUNDRY
50' HOSE ATD IN PATTERN SHOP
WATER BARRELS AND PAILS & CHEMICALS
THE EXTENS DISTO.
2 HAND HOSE CARTS WITH 200' 2" HOSE ON EACH
BRICK FLOOR IN BOILER ROOM

FALLS ROLLING MILLS & PLANING MILL

DRILL DEPT

PORTAGE

