

105

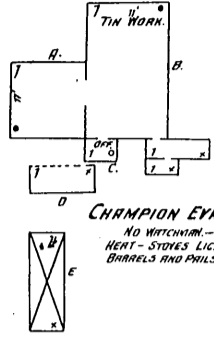
about 1/4 Mile S. of Town Hall.

RAUENNARD

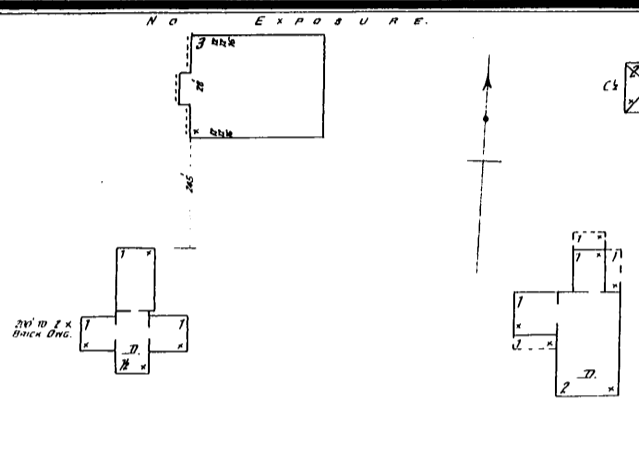
AT HUDSON

14 Miles N.E. of Akron
Population 1200, Prevailing Winds S.W.
Streets Level, Water from 11 Cisterns & 12
Fire Dept. of One Volunteer Co. of 30 Men
Paid \$200 per Year - \$300 2 1/2 - Horse
One Hand Eng. One Hand H. & L. Wagon
One Hand Reel, Gasoline Street Lights

BROWN



CHAMPION EVAPORATOR CO.
NO WATCHMAN -
HEAT - STOVES LIGHTS - OIL
BARRELS AND PAILS WATER



HUDSON UNION SCHOOL

HEAT - SHED SYSTEM
LIGHTS - LAMPS

NO EXPOSURE ANY SIDE.

CHURCH

STREETSBORO

FILLUS & CO. FLOUR MILL

NO WATCHMAN -
HEAT - STOVES FUEL - COAL LIGHTS - OIL LANTERNS
BARRELS AND PAILS OF WATER DISTRIBUTED
SMALL FORCE PUMP AND NO. 1 HOSE, WELL WATER

MACHINERY,
BEST SIFTING ONE 20 TON -
ONE SEPARATOR
18 FT. FOUR DOUBLE STRONG ROLL -
ONE PRICKER - ONE GRINDER
20 - ONE PRICKER AND SPREADER
TWO SHAY DUSTERS
27 - ONE SCOURER, FIVE REELS &
TWO SCALPERS.

WARE NO. 1
60' LONG
NO EXPOSURE
BEYOND
WARE NO. 2
60' LONG

C. A. S. C. R. R. SIDING.

1/2 Mile S.E. of Town Hall

1/4 Mile S.E. of Town Hall

3 CHAPEL

3 MIDDLE HALL

3 CHAPEL

3 MIDDLE HALL

3 CHAPEL

3 MIDDLE HALL

3 CHAPEL

3 MIDDLE HALL

3 CHAPEL

3 MIDDLE HALL

3 CHAPEL

3 MIDDLE HALL

3 CHAPEL

COTTAGE

CLINTON



WAGON SHED

LIVERY

CARRIAGES

Office

Office

Office

Office

Office

Office

Office

Office

Office

Office

Office

Office

Office

Office

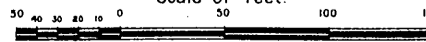
Office

Office

Office

PARK

Scale of Feet.



MAIN

MAIN