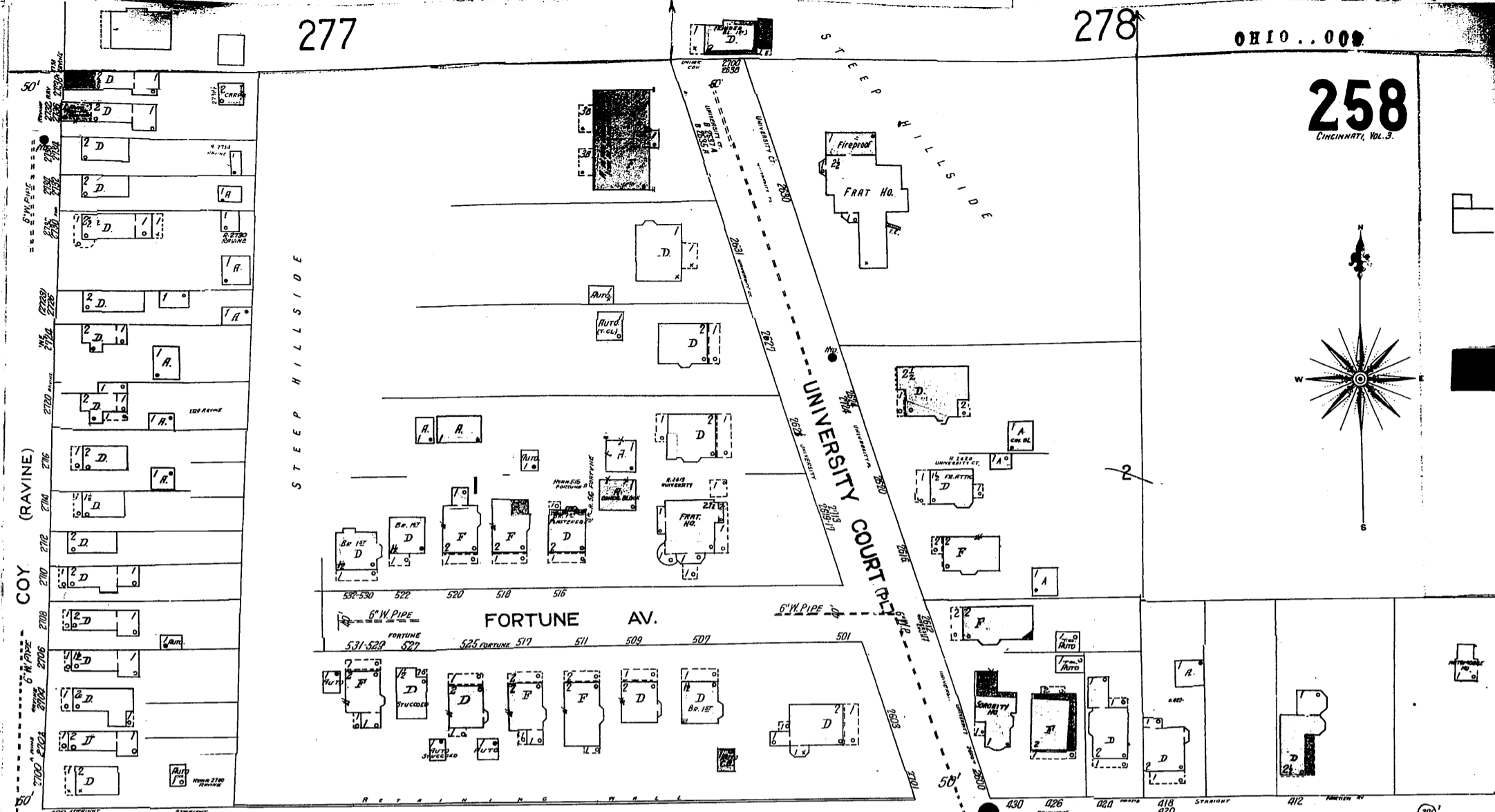
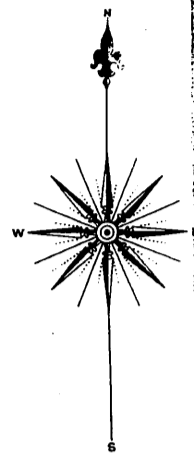


277

278

OHIO...000

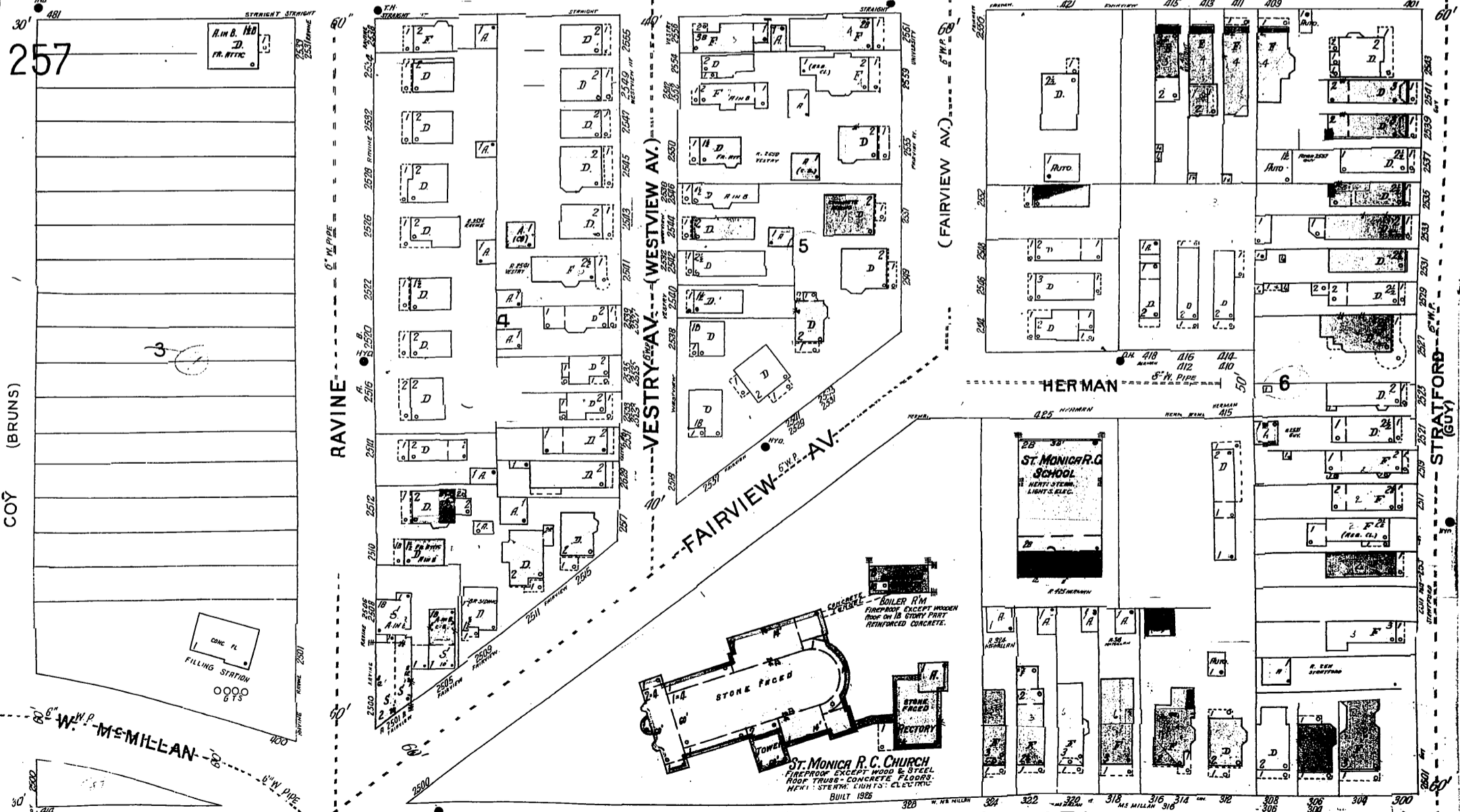
258  
CINCINNATI, VOL. 3.



STRAIGHT

(FAIRVIEW AV.)

259



257

COY (BRUNS)

RAVINE

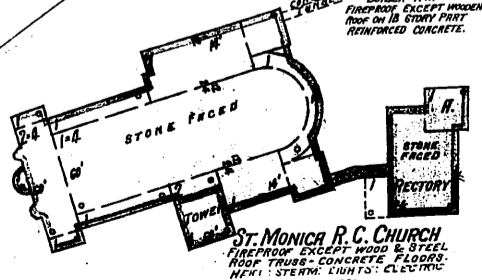
VESTRY AV. (WESTVIEW AV.)

(FAIRVIEW AV.)

STRAITFORD (COY)

FAIRVIEW AV.

HERMAN



ST. MONICA R.C. CHURCH  
FIREPROOF EXCEPT WOOD & STEEL  
ROOF TRUSS - CONCRETE FLOORS  
NEW: STEAM, LIGHTS, ELECTRIC  
BUILT 1928

Scale of Feet.

OLD Mc MILLAN

W. Mc MILLAN

251