

# General Index to VOLUMES

Reference number to volume

Population 600,000 - Prevailing Winds N & W

### WATER FACILITIES

Water supply from Lake Erie. Three tunnels from intake, radius 5 ft. 7 1/2 diam. each. Three pumping stations, one situated at each of two intakes and one at the outlet. Each equipped with two pumps of 10 million gallons capacity each and one pump of 10 million gallons capacity, also a reserve. One station at Fairview equipped with one pump of ten million gallons capacity and two pumps of two million gallons capacity, also in supplying second high pressure system. Cleveland Heights and portions of Newburg City supplied by two pumps of two million gallons capacity each, also in supplying second high pressure system. Capacity of the three stations 172 million gallons per 24 hours.

Two reservoirs, one high service, on Fairview Road near city limits, capacity 37 million gallons, elevated 123 ft. above Lake Erie, and low service, on Baldwin and surrounding roads, capacity 80 million gallons, elevated 113 ft. above Lake Erie. Also two high pressure systems located in Woodland Park in Cleveland Heights village with capacity of 200,000 gallons.

180 miles of water pipes, supply radius 16" to 48" diam., distributing mains 4" to 12" diam., 3315 hydrants, mostly above ground. Pressure 35 lbs. at top of Superior St. and E. Ninth St. 30 lbs. in business section of lower Superior Ave., and 20 lbs. on Columbus, Myrtle and Lorain Roads. Average daily consumption 65 million gallons.

12 miles of fire boat water pipes from river, 4" to 20" diam. 143 fire boat hydrants. Pressure 200 lbs. per sq. inch. A high pressure pump house to supplement the bores is under construction at Lakeside Ave. and East 15th St. to be equipped with six centrifugal pumps of 2500 gal. capacity each, having a discharge pressure of 270 lbs.

### FIRE DEPARTMENT

Four 34 engine hook & ladder, three hose and two fire boat companies, one water tower, six offices and nine 25 horse 33 horse wagons, 13 hook & ladder trucks, two chemical engines, two oil and gas combination hose and chemical wagons 10000 ft. 2 1/2" hose in good condition.

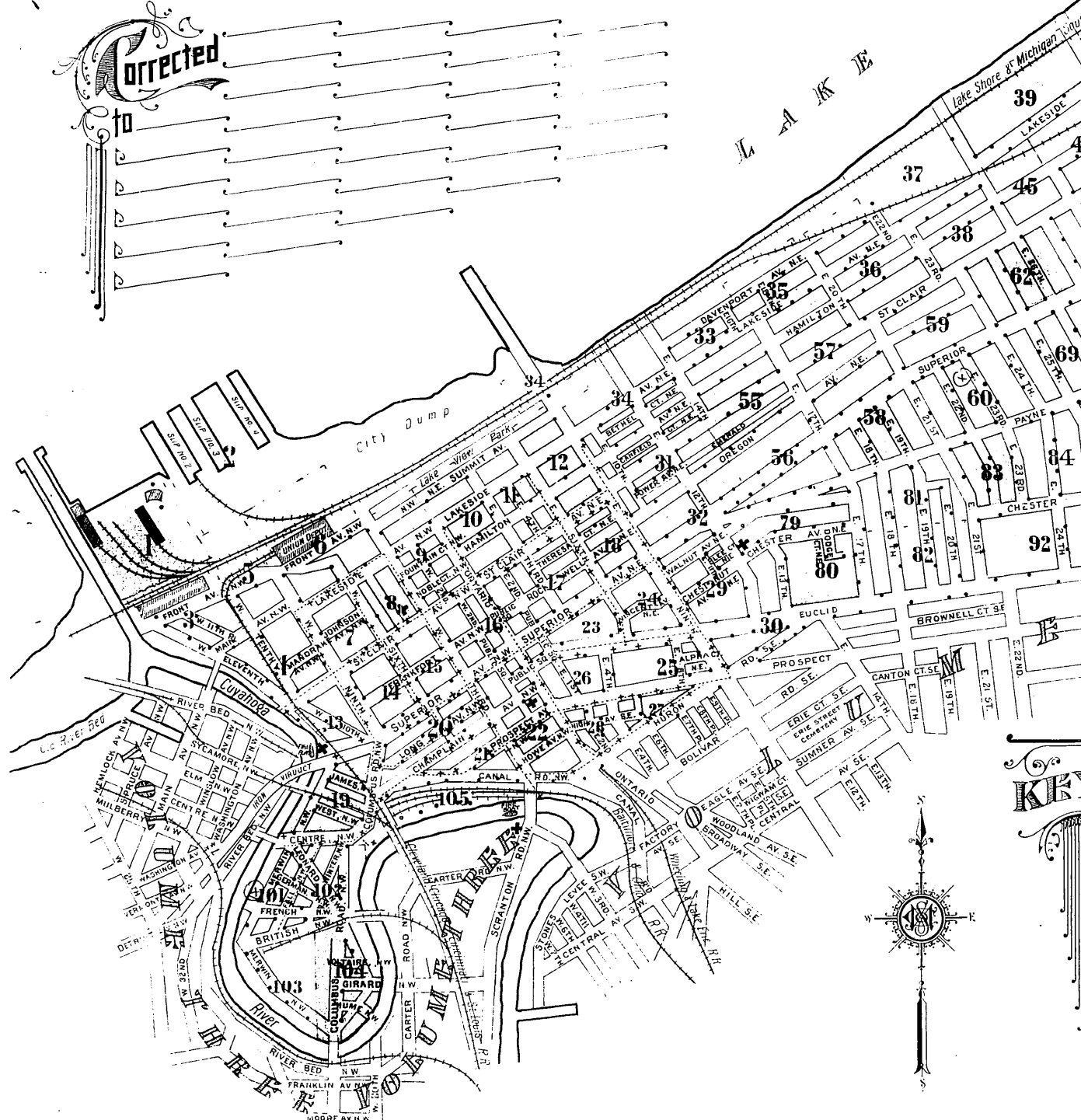
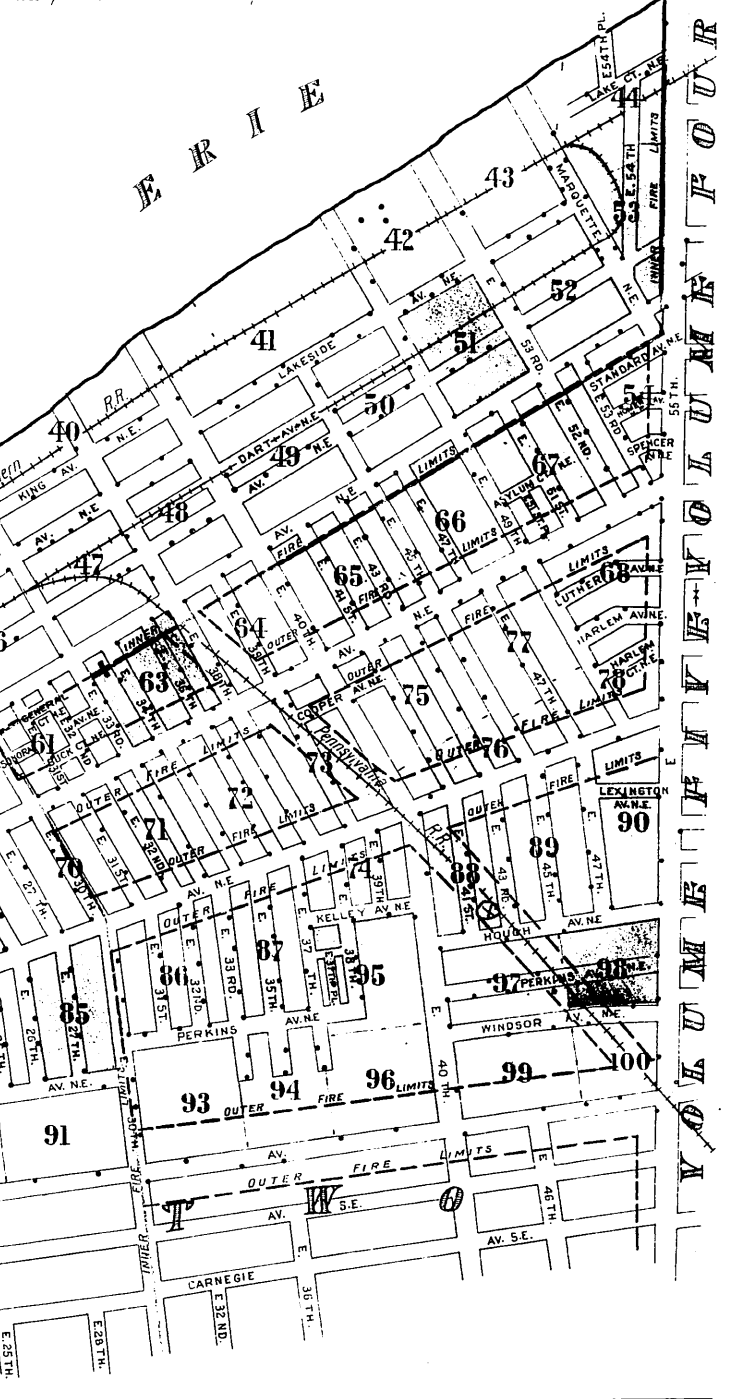
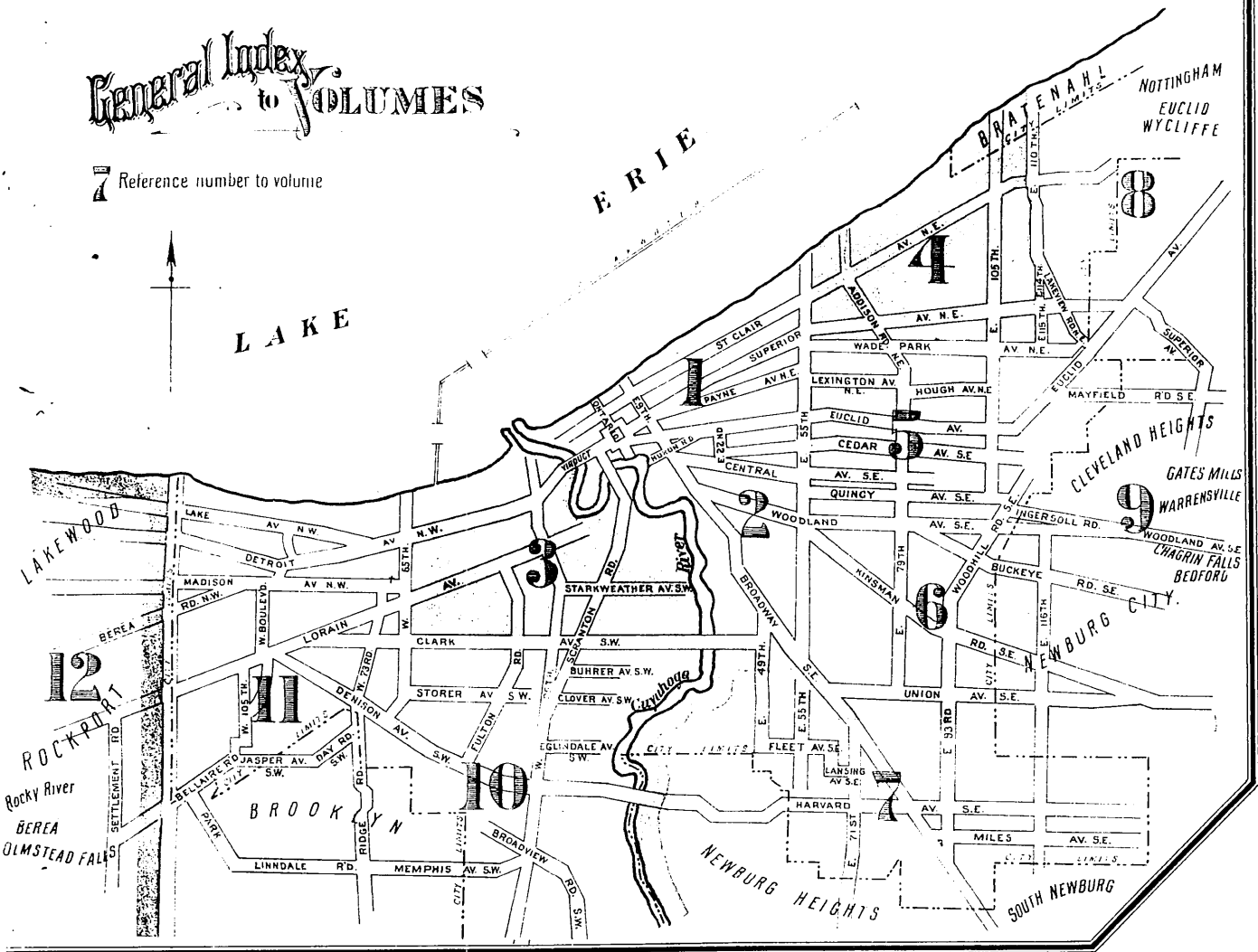
EXTRAS - Six hose wagons, three hook & ladder trucks, and four steam fire engines.

Two fire boats - The "Cleveland" stationed at the foot of Superior Ave., capacity 3000 gallons per minute and the "Fair" stationed at the foot of West 39th St., capacity 4000 gallons per minute. Captain and eleven men to each boat. Five levels have been run for boat collection.

Fixed fire alarm system, 53 boxes, 25 sirens and 100 fire boat sirens.

FIRE LIMITS - North on roads shown on red line, extends West across the river within which no frame buildings are permitted. Outer fire limits shown in heavy green line, extends about 150 ft. back from street line of the following thoroughfares - Superior Ave., Payne St., Euclid St., 5th St. and the C. & P. R. main lines. Frame buildings are permitted under these restrictions.

GRADES - Comparative, even rise of 75 ft. to 100 ft. from river to upper level usually occurs in from one to four squares.



## KEY

(CB)	Hollow concrete or cement block construction	Figures 12 to 20 indicate thickness of wall in inches
(F)	Five great construction	Figures 21 to 24 indicate opening and size in inches
(B)	Brick building with brick or metal cornice	with openings figures indicate on which floor
(FC)	Frame cornice	- opening protected by single iron door
(SF)	stone front	- double
(FS)	frame side	- standard or vault doors
(BV)	Brick veneered building	Windows protected by iron shutters
(BF)	Brick and frame	Window opening in first story
(D)	Frame building	Windows - second
(S)	Stone building	Windows - and third stories
(F)	Fire wall 6 inches above roof	Windows - fourth
(12)	12	Stable
(18)	18	Steam boilers
(24)	24	Water pipes
(30)	30	Hydrants
(36)	36	Climneys
(42)	42	Vertical pipe or stand pipe
(48)	48	Fire alarm boxes
(54)	54	Automatic sprinklers
(60)	60	Automatic fire alarm
(66)	66	Vertical pipe with fire escape
(72)	72	Fire escape
(78)	78	Independent electric plant
(84)	84	Fire pump
(90)	90	Elevation 5 block number, referring to
(96)	96	Hydrants & water pipe of fire boat connections as shown on key map
(102)	102	Hydrants & water pipe of fire boat connections as shown on key map