

The Cleveland Window Glass & Door Co.
NIGHT & SUNDAY WATCHMAN - H. E. R. 3511
THROUGHOUT - H. E. R. 3511
HEAT - STEAM - LIGHTS - ELECTRIC
CITY WATER - 3" W.P. 2" HOSE AS SHOWN
CHEMICAL EXTINGUISHERS -
WATER & PAWS DISTRIBUTED -
ELEVATORS AND STAIRWAYS TRAPPED -
TO BE SPRINKLED -

6

LAKESIDE AV. N.W.

The Weideman Co.

NIGHT & SUNDAY WATCHMAN - H. E. R. 3511
THROUGHOUT - H. E. R. 3511
HEAT - STEAM - LIGHTS - ELECTRIC
CITY WATER - 3" W.P. 2" HOSE AS SHOWN
CHEMICAL EXTINGUISHERS -
WATER & PAWS DISTRIBUTED -
ELEVATORS AND STAIRWAYS TRAPPED -
TO BE SPRINKLED -

The John Anisfield Co.

NIGHT & SUNDAY WATCHMAN - H. E. R. 3511
THROUGHOUT - H. E. R. 3511
HEAT - STEAM - LIGHTS - ELECTRIC
CITY WATER - 3" W.P. 2" HOSE AS SHOWN
CHEMICAL EXTINGUISHERS -
WATER & PAWS DISTRIBUTED -
ELEVATORS AND STAIRWAYS TRAPPED -
TO BE SPRINKLED -

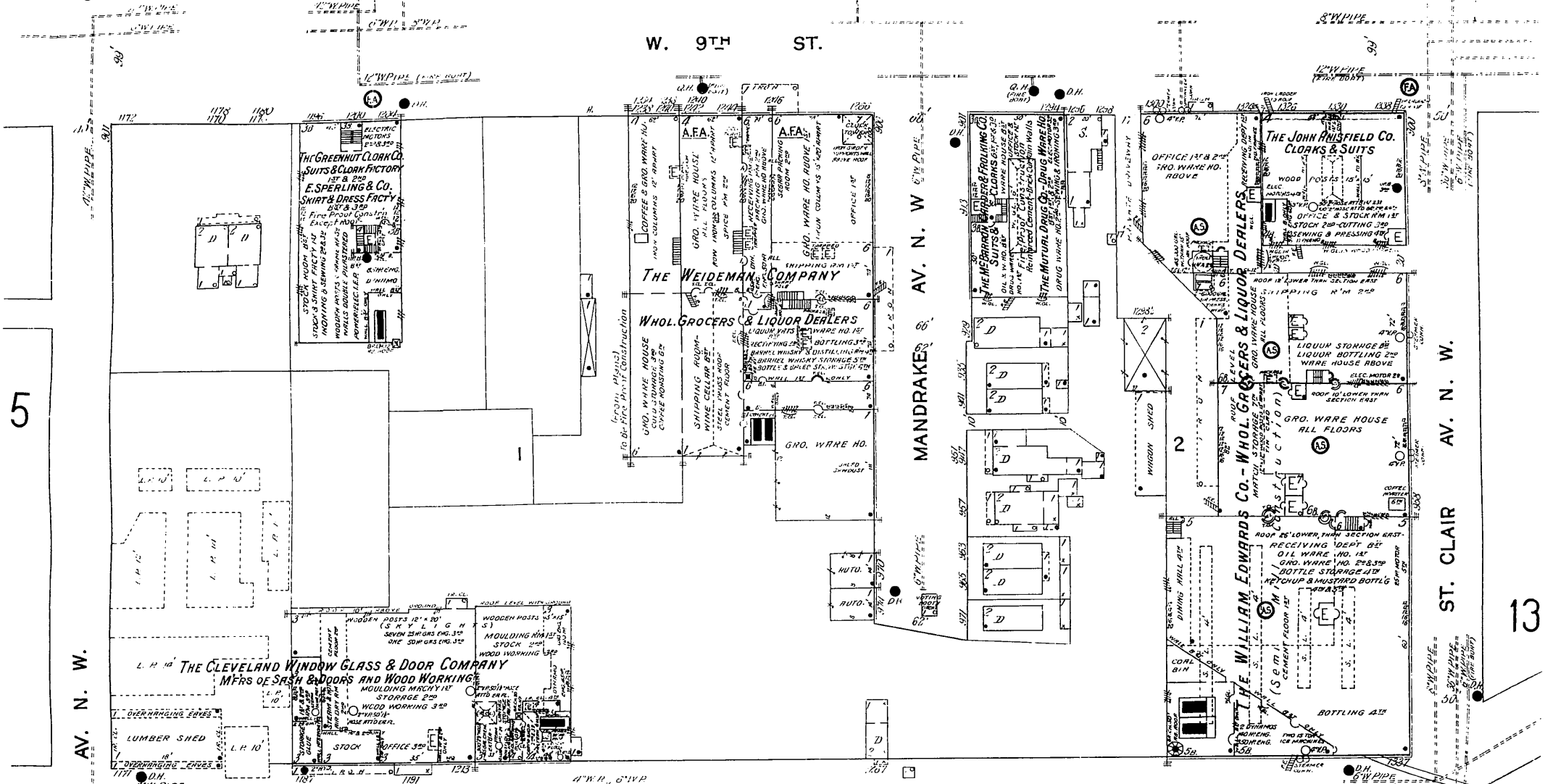
7

The William Edwards Co.

NIGHT & SUNDAY WATCHMAN - H. E. R. 3511
THROUGHOUT - H. E. R. 3511
HEAT - STEAM - LIGHTS - ELECTRIC
CITY WATER - 3" W.P. 2" HOSE AS SHOWN
CHEMICAL EXTINGUISHERS -
WATER & PAWS DISTRIBUTED -
ELEVATORS AND STAIRWAYS TRAPPED -
TO BE SPRINKLED -

4

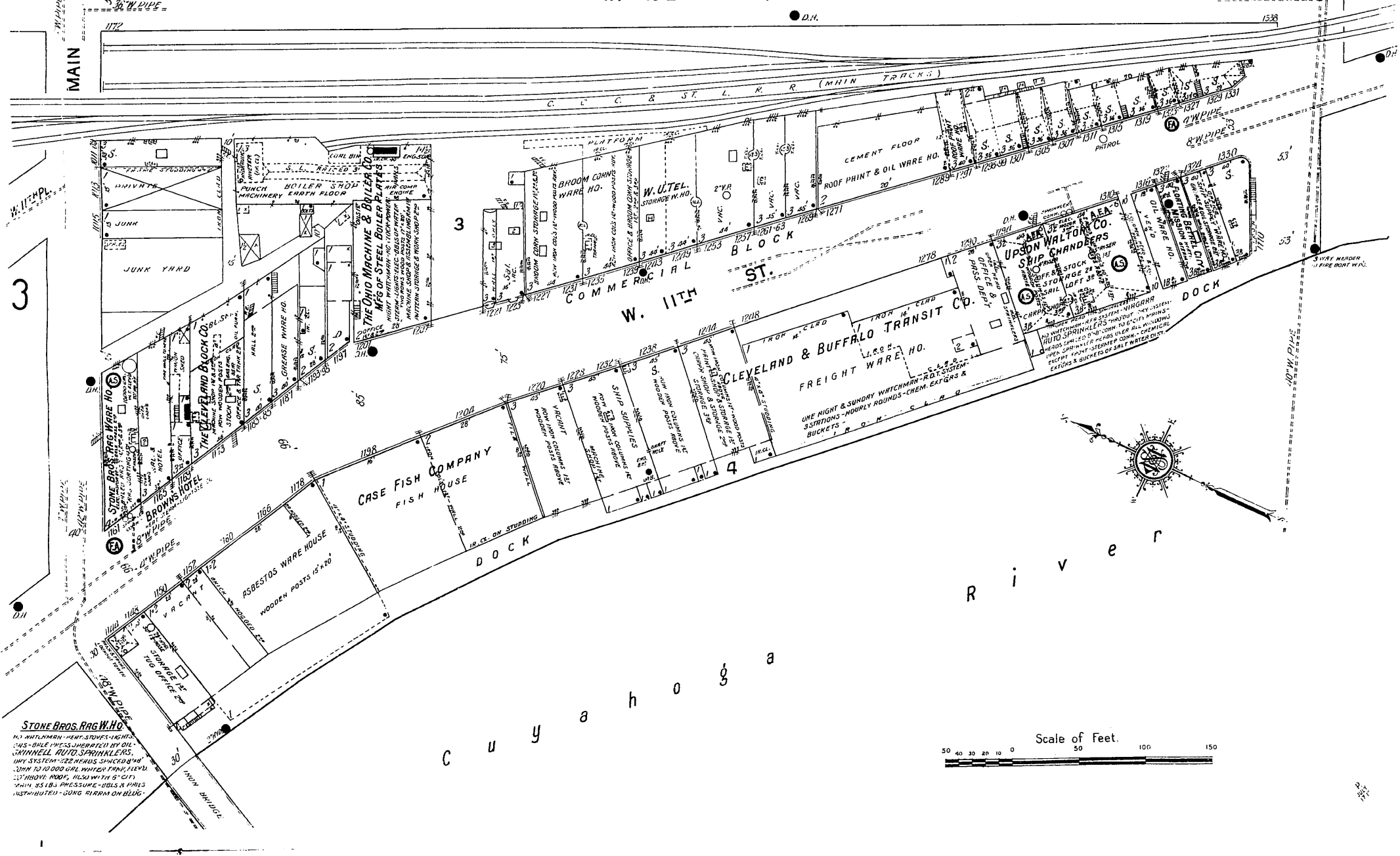
W. 9TH ST.



5

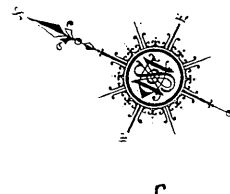
13

W. 10TH ST.

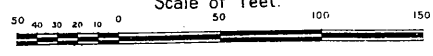


3

W. 11TH ST.



Scale of Feet.



C u y a h o g a