

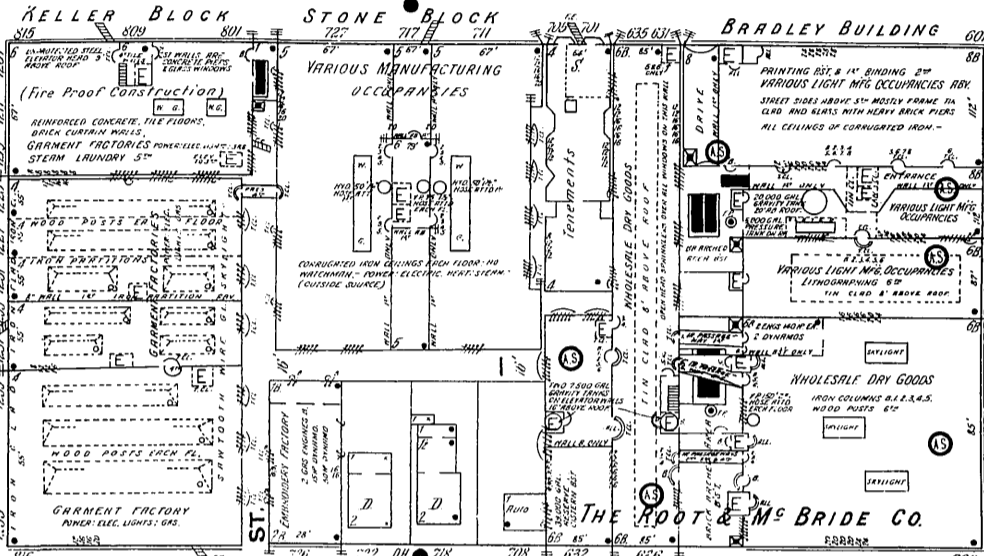
BRADLEY Bldg.

CONSTANT WATCHMAN IN CORRIDORS OF 1st & 2nd FLOORS, 3 A. D. 7 BONES 2 HOURLY ROTATING EXTING. BUILDINGS EQUIPPED WITH INTERNATIONAL RUD. SPRINKLERS, WET SYSTEM. HEADS SPACED 8' x 8' SUPPLIED BY DIRECT CITY PRESSURE, 8.01 TO 20.00 GAL. GRAVITY TANK 20' ABOVE 5th STORY ROOF & BY 6.00 GAL. PRESSURE TANK ON ROOF (80 LBS. PRESSURE) FILLED FROM CITY MAIN BY SMALL FAIRBANKS MORSE P. P.



6

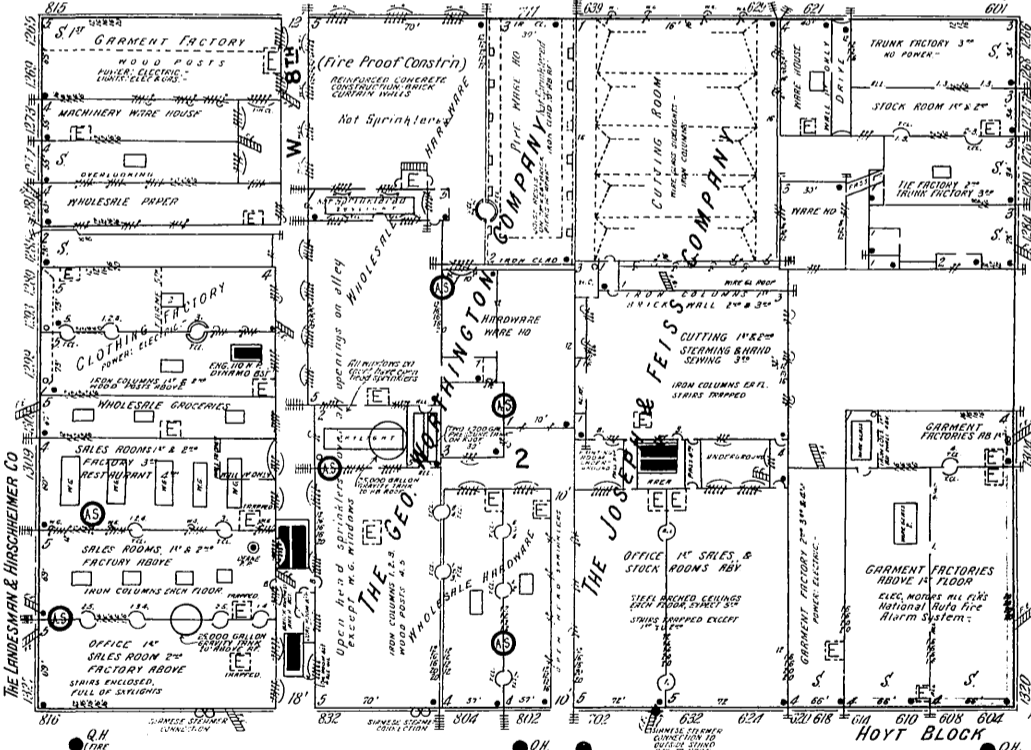
LAKESIDE AV. N. W.



The Root & Mc Bride Co. Wholesale D.G.

NITE NIGHT & SUNDAY WATCHMEN, AMERICAN WATCHMANS TIME DETECTION, 30 STATIONS HEAVY ROTATING, ALL BUILDINGS EQUIPPED WITH GRINNELL AUTO SPRINKLERS, WET SYSTEM IN 6th STORY BUILDING REMAINDER DRY SYSTEM, HEADS SPACED 8' x 8' SUPPLIED BY DIRECT CITY PRESSURE OF 35 POUNDS THROUGH TWO 4" COINGS AND 3500 GAL. GRAVITY TANK ON E. 11th FLOOR 10' ABOVE 10th FLOOR, FILLED BY SMITH-BELL P. P. LIFE SAFETY 500 GALS PER MIN. PUMP ROOM SUPPLIES SPRINKLER SYSTEM DIRECT FROM 35000 GAL. RESERVE SYSTEM IN ROOF FILLED BY CITY MAIN, A. D. 1 CO SUPERVISORY SERVICE, 1050' 2" WIDE AT TO VERTICAL PIPES IN 150' LENGTHS & SUPPLIED BY SEPARATE CITY MAINS IN PITTSBURGH CHEMICALS - 75 MILLER CHEMICAL MILLS 5 GAL. CHEMICALS & WATER PAILS DISTRIBUTED, HEAT, STEAM, LIGHTS, ELEC. P. P., FUEL, COAL.

JOHNSON AV. N. W.



ST. CLAIR AV. N. W.

14

The Geo. Worthington Co. Wholesale Hardware

CONSTANT WATCHMAN 76 A. D. 7 BONES ROTATING EXTING. BUILDINGS EQUIPPED WITH GRINNELL AUTO SPRINKLERS, WET SYSTEM, HEADS SPACED 8' x 8' SUPPLIED BY DIRECT CITY PRESSURE, (35 LBS) AND BY TWO 1700 GALLON GRAVITY TANK 20' ABOVE 5th STORY ROOF, FILLED FROM CITY MAIN, A. D. 1 CO SUPERVISORY SERVICE, 1050' 2" WIDE AT TO VERTICAL PIPES IN 150' LENGTHS & SUPPLIED BY SEPARATE CITY MAINS IN PITTSBURGH CHEMICALS - 75 MILLER CHEMICAL MILLS 5 GAL. CHEMICALS & WATER PAILS DISTRIBUTED, HEAT, STEAM, LIGHTS, ELEC. P. P., FUEL, COAL.

The Joseph & Feiss Co. Clothing Manufacturers

2 MEN ON DUTY ALL NIGHT, NO CLOCK, NATIONAL AUTO FIRE ALARM SYSTEM, 40 MILLER CHEMICALS AND 84 CHEMICAL PAILS DISTRIBUTED, HEAT, STEAM, LIGHTS AND POWER, ELECTRIC, (OUTSIDE COUNTRY) FUEL, COAL.

The Lande & Hirschheimer Co. Clock Manufacturers

NITE NIGHT & SUNDAY WATCHMEN 6 A. D. 7 BONES ROTATING EXTING. BUILDINGS EQUIPPED WITH GRINNELL AUTO SPRINKLERS, WET SYSTEM, HEADS SPACED 8' x 8' SUPPLIED BY DIRECT CITY PRESSURE, (35 LBS) AND BY TWO 1700 GALLON GRAVITY TANK 20' ABOVE 5th STORY ROOF, FILLED FROM CITY MAIN, A. D. 1 CO SUPERVISORY SERVICE, 1050' 2" WIDE AT TO VERTICAL PIPES IN 150' LENGTHS & SUPPLIED BY SEPARATE CITY MAINS IN PITTSBURGH CHEMICALS - 75 MILLER CHEMICAL MILLS 5 GAL. CHEMICALS & WATER PAILS DISTRIBUTED, HEAT, STEAM, LIGHTS, ELEC. P. P., FUEL, COAL.

Scale of Feet.

