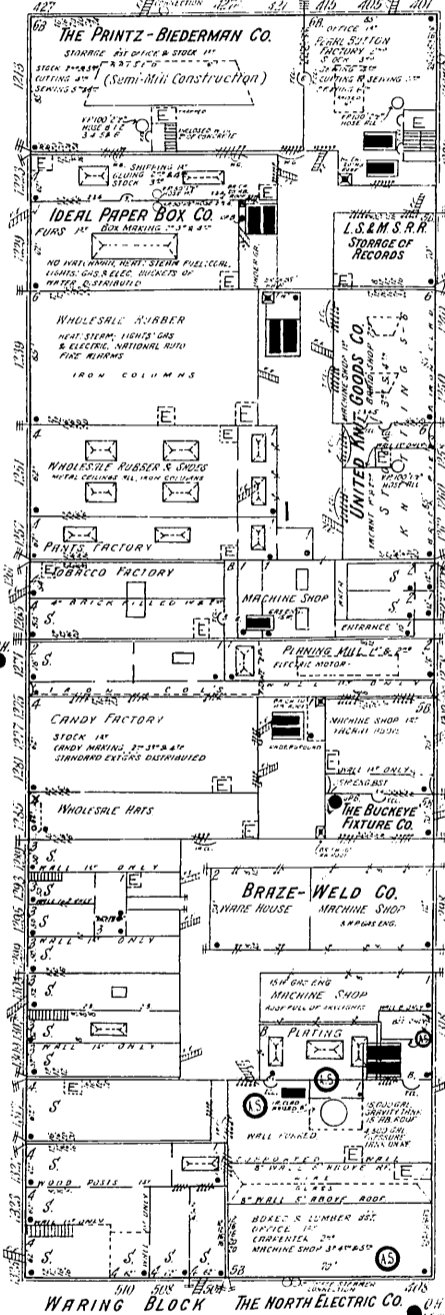




6

LAKESIDE AV. N. W.

STONE BLOCK



**THE PRINTZ-BIEDERMAN CO.
CLOAKS & SUITS**
100' x 100' BLDG. WATERMAN, H. O. SYSTEM
STATIONS, HOODS, K. ROYALTY, ELECT. WIRE, TEST
TERM. LUMINOUS GAS & ELECTRIC, HYDROGENS &
WATER, AS SHOWN. L. T. RICHARDSON, CHEMICAL, EXTENSIVE
STAINLESS

UNITED KNIT GOODS CO.
NO WATERMAN - HEAT, STEAM (QUINCE JONES)
LUMINOUS GAS & ELECTRIC

JOHNSON AV. N.W.
W. 6TH ST.
7

4TH ST.

ST. CLAIR AV. N. W.

15

THE NORTH ELECTRIC CO.
100' x 100' BLDG. WATERMAN, H. O. SYSTEM
STATIONS, HOODS, K. ROYALTY, ELECT. WIRE, TEST
TERM. LUMINOUS GAS & ELECTRIC, HYDROGENS &
WATER, AS SHOWN. L. T. RICHARDSON, CHEMICAL, EXTENSIVE
STAINLESS

FIRE DEPARTMENT
ENG. CO. NO. 1 10 MEN, 3 HORSES, ONE CLAPP &
JAMES ENTRY 1st CLASS ENG. ONE HOSE WAGON,
2nd 2nd HOSE & 1st 1st HOSE.
ENG. CO. NO. 27 11 MEN, 3 HORSES, ONE MANNING
1st CLASS ENG. ONE HOSE WAGON, 2nd 2nd HOSE
& 1st 1st HOSE.
H. & L. CO. NO. 1 17 MEN, 6 HORSES, ONE H.S. TRUCK,
385' OF LADDER, WITH 55' EXTENSION, SPRING RANGING
ONE WATER TOWER, 1000' 2nd HOSE IN RESERVE

9

W. 3RD ST.

NOBLE CT. N.W.

