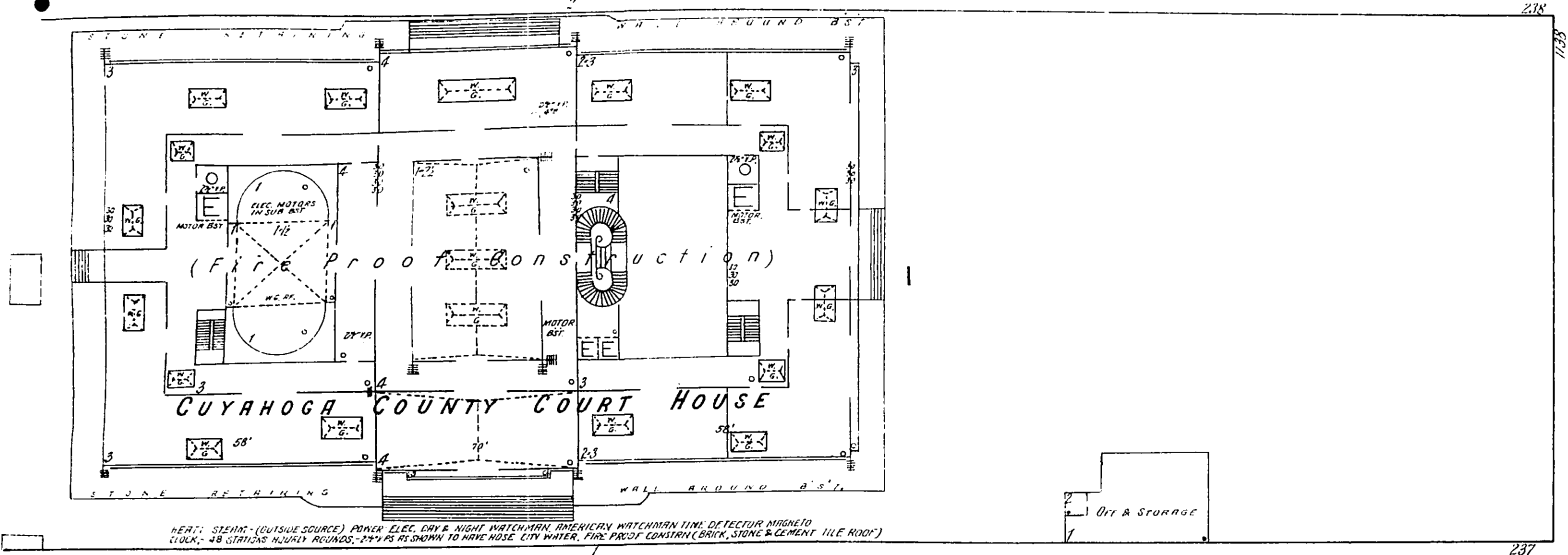
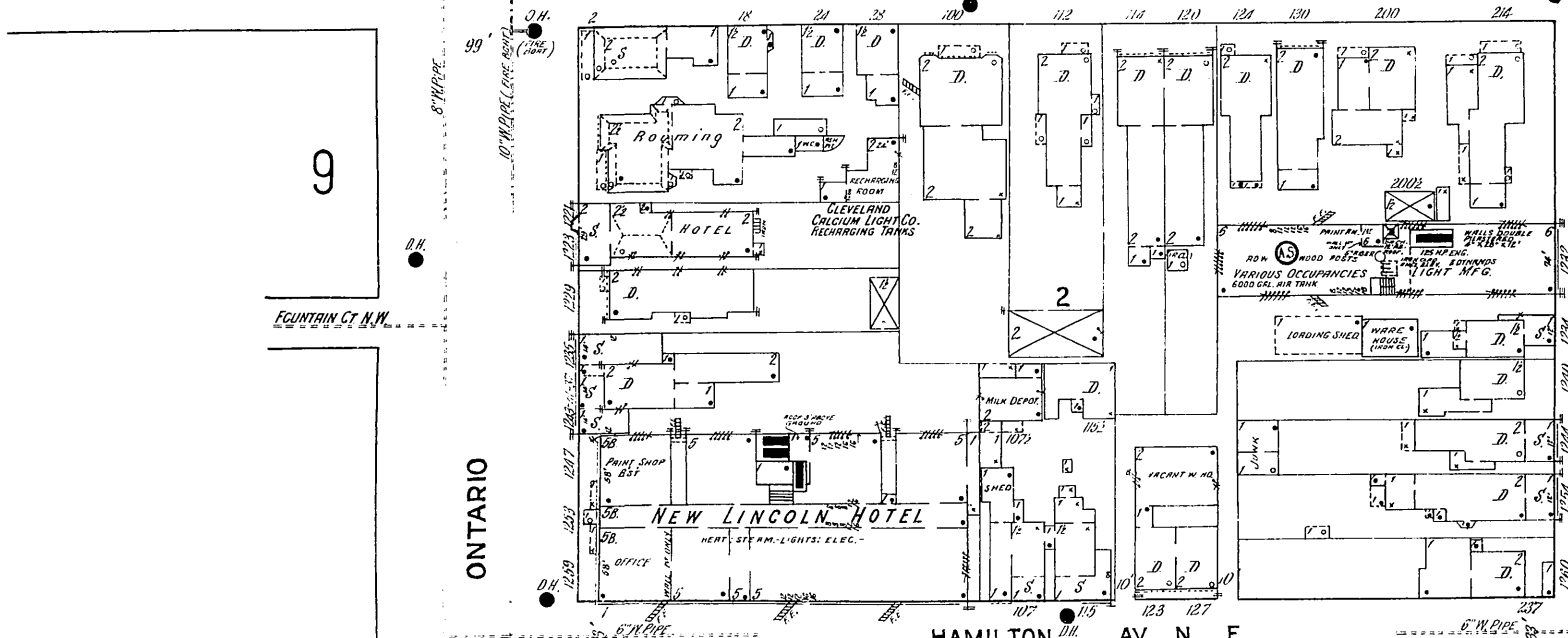


SUMMIT AV. N. E.

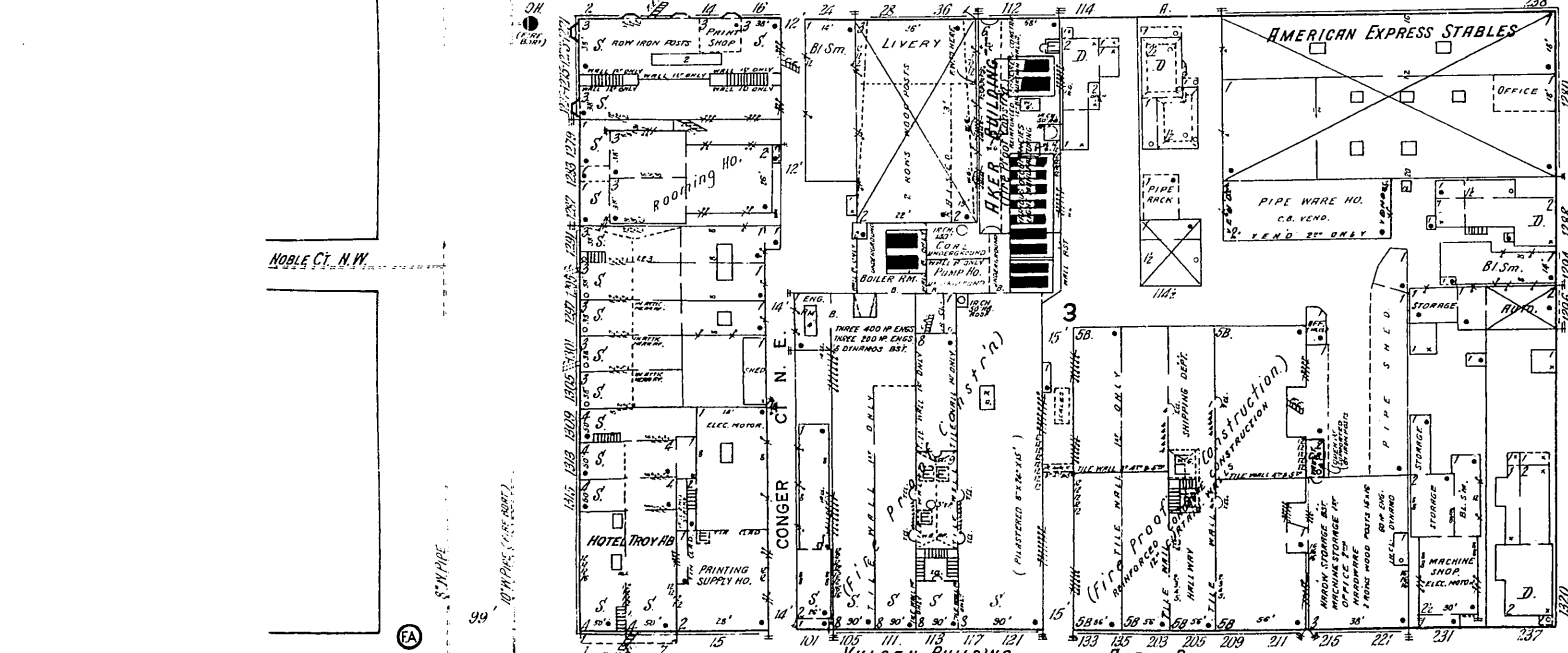


HEAT: STEAM - (OUTSIDE SOURCE) POWER ELEC. DAY & NIGHT WATCHMAN AMERICAN WATCHMAN TYPE OF ELECTRIC METERED CLOCK; 48 STATIONS HOURLY ROUNDS; 750 FT. 10 IN. MAIN TO HAVE MADE CITY WATER, FIRE EXCISE COUNTY (BRICK, STONE & CEMENT TILE ROOF)

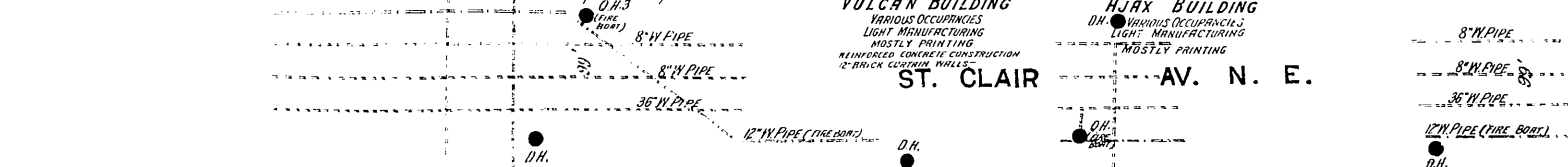
LAKESIDE AV. N. E.



HAMILTON AV. N. E.



ST. CLAIR AV. N. E.



16

17

E. 3RD ST.

POWER BLDG.
 POWER ELEC. & STEAM - L. E. P. NIGHT & SUNDAY WATCHMAN - R. D. T. SYSTEM, 6 STATIONS HOURLY ROUNDS - 2 1/2 OF WATER & BUCKETS DISTRIBUTED - GRAYWELL AUTO SPRINKLERS - THROUGH DRY SYSTEM NEEDS SPREAD 8" X 8" CONNECTED TO 6000 GALLON AIR TANK & 6" CITY MAIN, PRESSURE 60 LBS. GONG ALARM IN BUILDING.

AKER BLDG.
 NIGHT & SUNDAY WATCHMAN, ELEC. CLOCK, 5 STATIONS, HOURLY ROUNDS (AMERICAN WATCHMAN'S CLOCK). POWER: ELECTRIC, L. E. P. LIGHTS: ELECTRIC - NO FIRE APPARATUS.

VULCAN BLDG.
 NIGHT & SUNDAY WATCHMAN, AMERICAN WATCHMAN ELEC. CLOCK 9 STATIONS HOURLY ROUNDS - 3" VERTICAL PIPE NO HOSE - CITY WATER - HEAT & POWER - STEAM & ELECTRIC, L. E. P. ELEC. - CON. - LIGHTS: ELEC. & GAS.

AJAX BLDG.
 NIGHT & SUNDAY WATCHMAN, AMERICAN WATCHMAN ELEC. CLOCK 6 STATIONS HOURLY ROUNDS - POWER: ELEC. HEAT: CLEAN (OUTSIDE) NO FIRE APPARATUS.

Scale of Feet.
 50 100 150