

GOVERNOR D. W. ...

Schofield Bldg
NIGHT WATCHMAN - 10 FT STATIONS HOURLY REPORTS
TIME DETECTOR - 10 STATIONS HOURLY REPORTS
FIRE STRONG (OUTSIDE SOURCE) 1 1/2 INCHES
50 2 1/2 INCHES RATED 10 1/2 INCHES FROM CITY MAIN
3 1/2 INCHES CONN. X 2 1/2 INCHES WASHINGTON FORCE
PUMPS (SIZE 7 1/2 X 7 1/2 X 7 1/2 INCHES) 1 1/2 HP

CITIZENS Bldg
NIGHT WATCHMAN - 10 FT STATIONS HOURLY REPORTS
TIME DETECTOR - 10 STATIONS HOURLY REPORTS
FIRE STRONG (OUTSIDE SOURCE) 1 1/2 INCHES
50 2 1/2 INCHES RATED 10 1/2 INCHES FROM CITY MAIN
3 1/2 INCHES CONN. X 2 1/2 INCHES WASHINGTON FORCE
PUMPS (SIZE 7 1/2 X 7 1/2 X 7 1/2 INCHES) 1 1/2 HP

PERMANENT Bldg
NIGHT WATCHMAN - 10 FT STATIONS HOURLY REPORTS
TIME DETECTOR - 10 STATIONS HOURLY REPORTS
FIRE STRONG (OUTSIDE SOURCE) 1 1/2 INCHES
50 2 1/2 INCHES RATED 10 1/2 INCHES FROM CITY MAIN
3 1/2 INCHES CONN. X 2 1/2 INCHES WASHINGTON FORCE
PUMPS (SIZE 7 1/2 X 7 1/2 X 7 1/2 INCHES) 1 1/2 HP

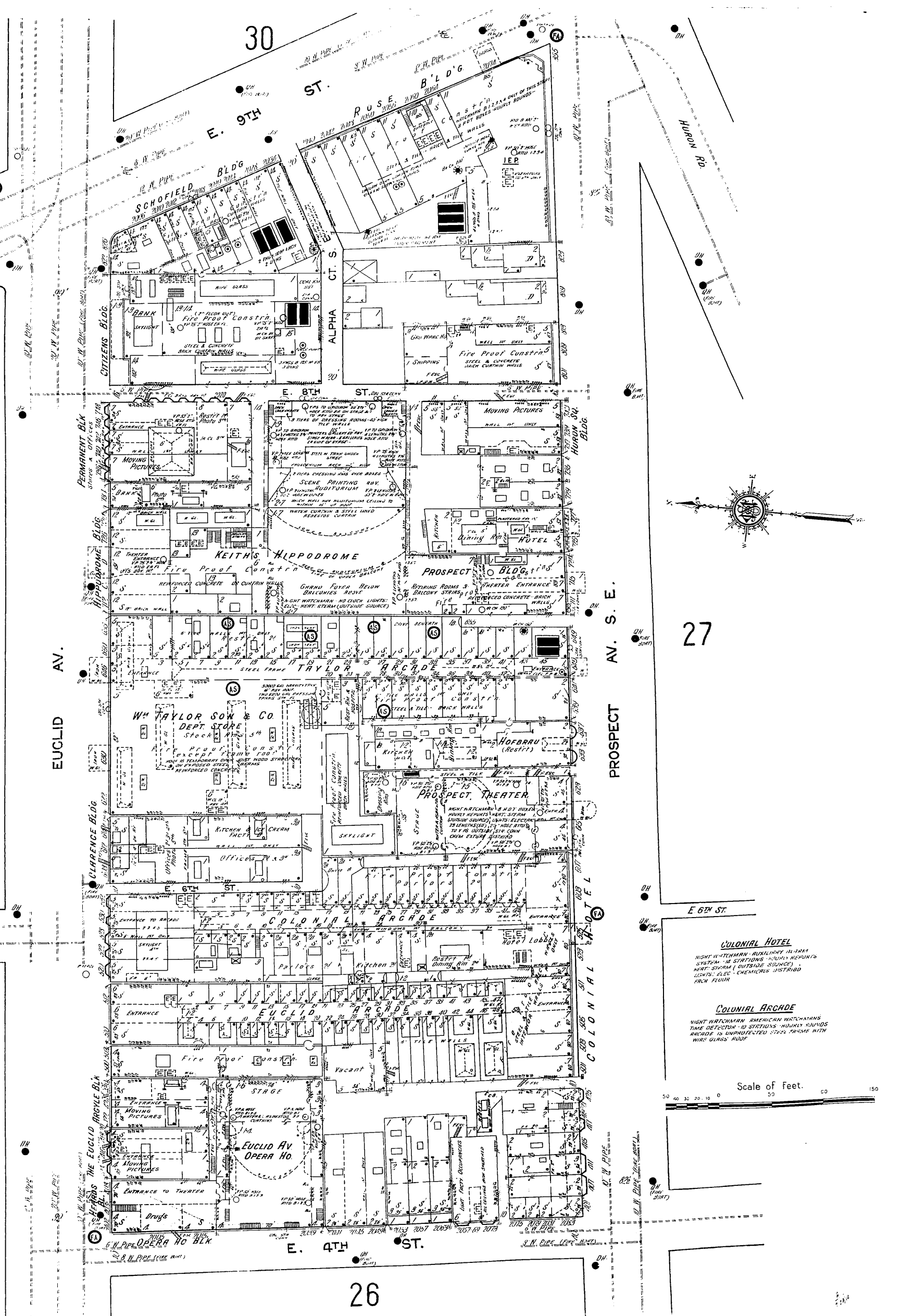
WM TAYLOR SON & CO
DEPT. STORE & ARCADE
NIGHT & SUNDAY WATCHMAN - AMERICAN WATCHMAN
TIME DETECTOR - 10 STATIONS HOURLY REPORTS
FIRE STRONG (OUTSIDE SOURCE) 1 1/2 INCHES
50 2 1/2 INCHES RATED 10 1/2 INCHES FROM CITY MAIN
3 1/2 INCHES CONN. X 2 1/2 INCHES WASHINGTON FORCE
PUMPS (SIZE 7 1/2 X 7 1/2 X 7 1/2 INCHES) 1 1/2 HP

EUCLID ARCADE
NIGHT WATCHMAN - AMERICAN WATCHMAN
TIME DETECTOR - 10 STATIONS HOURLY REPORTS
FIRE STRONG (OUTSIDE SOURCE) 1 1/2 INCHES
50 2 1/2 INCHES RATED 10 1/2 INCHES FROM CITY MAIN
3 1/2 INCHES CONN. X 2 1/2 INCHES WASHINGTON FORCE
PUMPS (SIZE 7 1/2 X 7 1/2 X 7 1/2 INCHES) 1 1/2 HP

EUCLID AV OPERA HO.
NIGHT WATCHMAN - 10 FT STATIONS HOURLY REPORTS
TIME DETECTOR - 10 STATIONS HOURLY REPORTS
FIRE STRONG (OUTSIDE SOURCE) 1 1/2 INCHES
50 2 1/2 INCHES RATED 10 1/2 INCHES FROM CITY MAIN
3 1/2 INCHES CONN. X 2 1/2 INCHES WASHINGTON FORCE
PUMPS (SIZE 7 1/2 X 7 1/2 X 7 1/2 INCHES) 1 1/2 HP



Scale of Feet. 0 10 20 30 40 50 60 70 80 90 100



PROSPECT AV. S. E.

EUCLID AV.

E 6TH ST

E. 4TH ST.

E 6TH ST.

COLONIAL HOTEL

COLONIAL HOTEL
NIGHT WATCHMAN - AMERICAN WATCHMAN
TIME DETECTOR - 10 STATIONS HOURLY REPORTS
FIRE STRONG (OUTSIDE SOURCE) 1 1/2 INCHES
50 2 1/2 INCHES RATED 10 1/2 INCHES FROM CITY MAIN
3 1/2 INCHES CONN. X 2 1/2 INCHES WASHINGTON FORCE
PUMPS (SIZE 7 1/2 X 7 1/2 X 7 1/2 INCHES) 1 1/2 HP

COLONIAL ARCADE
NIGHT WATCHMAN - AMERICAN WATCHMAN
TIME DETECTOR - 10 STATIONS HOURLY REPORTS
FIRE STRONG (OUTSIDE SOURCE) 1 1/2 INCHES
50 2 1/2 INCHES RATED 10 1/2 INCHES FROM CITY MAIN
3 1/2 INCHES CONN. X 2 1/2 INCHES WASHINGTON FORCE
PUMPS (SIZE 7 1/2 X 7 1/2 X 7 1/2 INCHES) 1 1/2 HP