

25

23

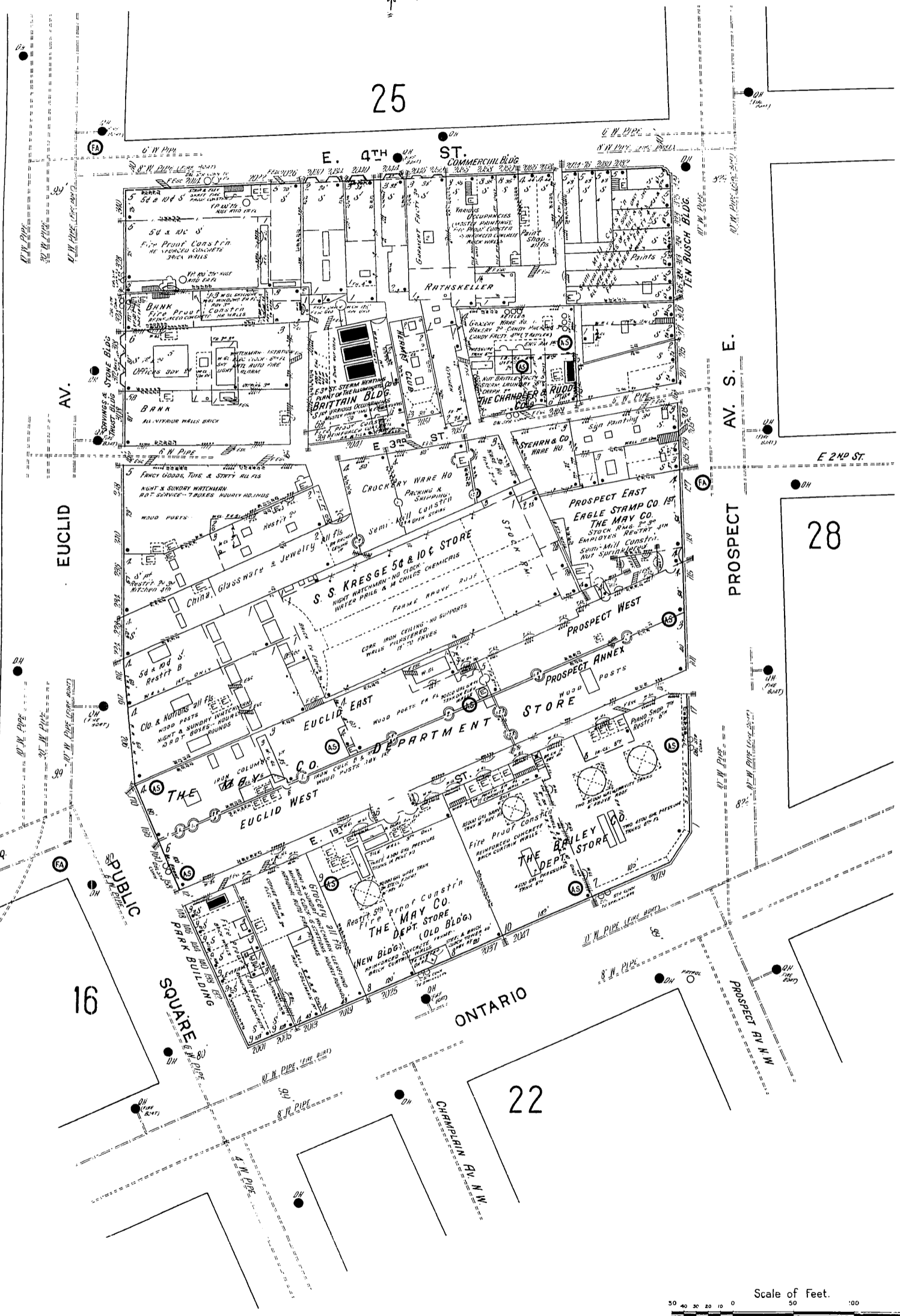
28

22

The Chandler & Rudd Co
WHOL. BAKERY & CANDY FRCTY
 NIGHT & SUNDAY WATCHMAN - A D T SERVICE -
 35 FEET - HOURLY ROUNDS NATIONAL AUTO FIRE
 SCHEDULE INSTALLED BUT NOT IN USE
 VERT. STEAM (OUTSIDE SOURCE) WATER PUMPER
 ELECTR. ALL DEPTS. EQUIPPED WITH AUTO
 SPRINKLERS - SOUND HERBS - INTERNATIONAL
 HERBS IN NEW ONTARIO BLDG. & PROSPECT
 RYMER - NEARBY HERBS IN PROSPECT WEST
 ALL OTHER HERBS SPRINKLED - ALL HERBS MET
 EXCEPT IN CROWN TOWER SUPPLIED BY TWO
 QUANTITY TANKS AS SHOWN BY 4000 & 30000
 GALS CAPCY & THREE 4500 GAL. PRESSURE
 TANKS & PUMP NO. 10 OLD BLDG. TANKS
 FILLED FROM 2 1/2" DIA. 10" HIGH BY HOISTING TON
 P.P. SIZE 7 1/4" X 6" RIVERGAGE PRESSURE 125 LBS
 DIRECT CITY PRESSURE FROM 4" AMMINS
 2 1/2" DIA. 10" CONNS. SUPPLEMENTARY SERVICE
 NO LOCAL ALARMS - 12 DOZEN CHEMICALS DISTRIBUTED
 LIGHTS & POWER - ELECTRIC

The May Co
 NIGHT & SUNDAY WATCHMAN - A D T SERVICE -
 35 FEET - HOURLY ROUNDS NATIONAL AUTO FIRE
 SCHEDULE INSTALLED BUT NOT IN USE
 VERT. STEAM (OUTSIDE SOURCE) WATER PUMPER
 ELECTR. ALL DEPTS. EQUIPPED WITH AUTO
 SPRINKLERS - SOUND HERBS - INTERNATIONAL
 HERBS IN NEW ONTARIO BLDG. & PROSPECT
 RYMER - NEARBY HERBS IN PROSPECT WEST
 ALL OTHER HERBS SPRINKLED - ALL HERBS MET
 EXCEPT IN CROWN TOWER SUPPLIED BY TWO
 QUANTITY TANKS AS SHOWN BY 4000 & 30000
 GALS CAPCY & THREE 4500 GAL. PRESSURE
 TANKS & PUMP NO. 10 OLD BLDG. TANKS
 FILLED FROM 2 1/2" DIA. 10" HIGH BY HOISTING TON
 P.P. SIZE 7 1/4" X 6" RIVERGAGE PRESSURE 125 LBS
 DIRECT CITY PRESSURE FROM 4" AMMINS
 2 1/2" DIA. 10" CONNS. SUPPLEMENTARY SERVICE
 NO LOCAL ALARMS - 12 DOZEN CHEMICALS DISTRIBUTED
 LIGHTS & POWER - ELECTRIC

The Bailey Co
 NIGHT & SUNDAY WATCHMAN - A D T SERVICE -
 35 FEET - HOURLY ROUNDS NATIONAL AUTO FIRE
 SCHEDULE INSTALLED BUT NOT IN USE
 VERT. STEAM (OUTSIDE SOURCE) WATER PUMPER
 ELECTR. ALL DEPTS. EQUIPPED WITH AUTO
 SPRINKLERS - SOUND HERBS - INTERNATIONAL
 HERBS IN NEW ONTARIO BLDG. & PROSPECT
 RYMER - NEARBY HERBS IN PROSPECT WEST
 ALL OTHER HERBS SPRINKLED - ALL HERBS MET
 EXCEPT IN CROWN TOWER SUPPLIED BY TWO
 QUANTITY TANKS AS SHOWN BY 4000 & 30000
 GALS CAPCY & THREE 4500 GAL. PRESSURE
 TANKS & PUMP NO. 10 OLD BLDG. TANKS
 FILLED FROM 2 1/2" DIA. 10" HIGH BY HOISTING TON
 P.P. SIZE 7 1/4" X 6" RIVERGAGE PRESSURE 125 LBS
 DIRECT CITY PRESSURE FROM 4" AMMINS
 2 1/2" DIA. 10" CONNS. SUPPLEMENTARY SERVICE
 NO LOCAL ALARMS - 12 DOZEN CHEMICALS DISTRIBUTED
 LIGHTS & POWER - ELECTRIC



Scale of Feet.
 0 50 100 150