

ST. CLAIR AV. N. E.

8" W. PIPE

40" W. PIPE
6" W. PIPE

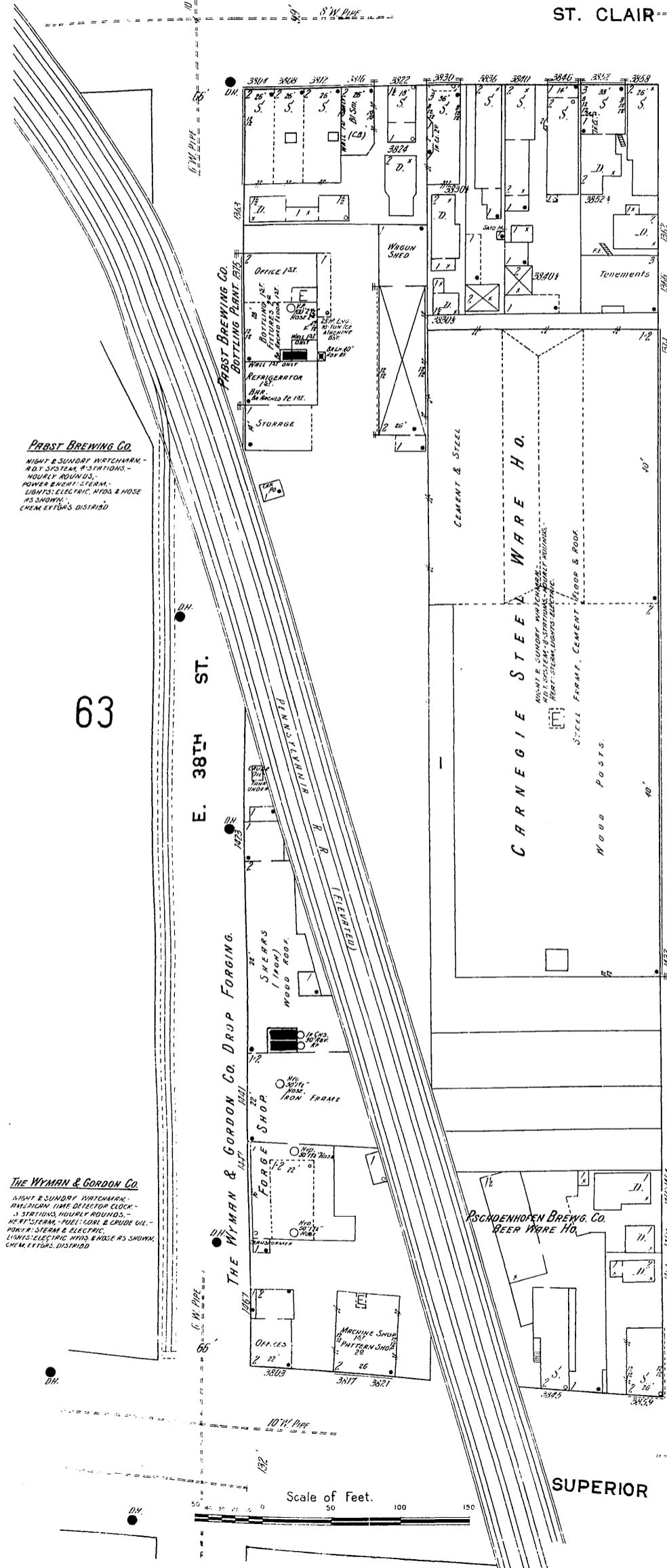
63

E. 38TH ST.

THE WYMAN & GORDON CO. DRUP FORGING.

PRAST BREWING CO. BOTTLING PLANT

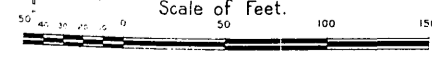
PRAST BREWING CO.
NIGHT & SUNDAY WITCHAMM -
W.D.T. SYSTEM & STATIONS -
HOURLY ROUNDS -
POWER NIGHT STERN -
LIGHTS: ELECTRIC, HYD. & HOSE
AS SHOWN -
CHEM. ETTOR'S DISTRIED



CARNEGIE STEEL WARE HO.

SUPERIOR

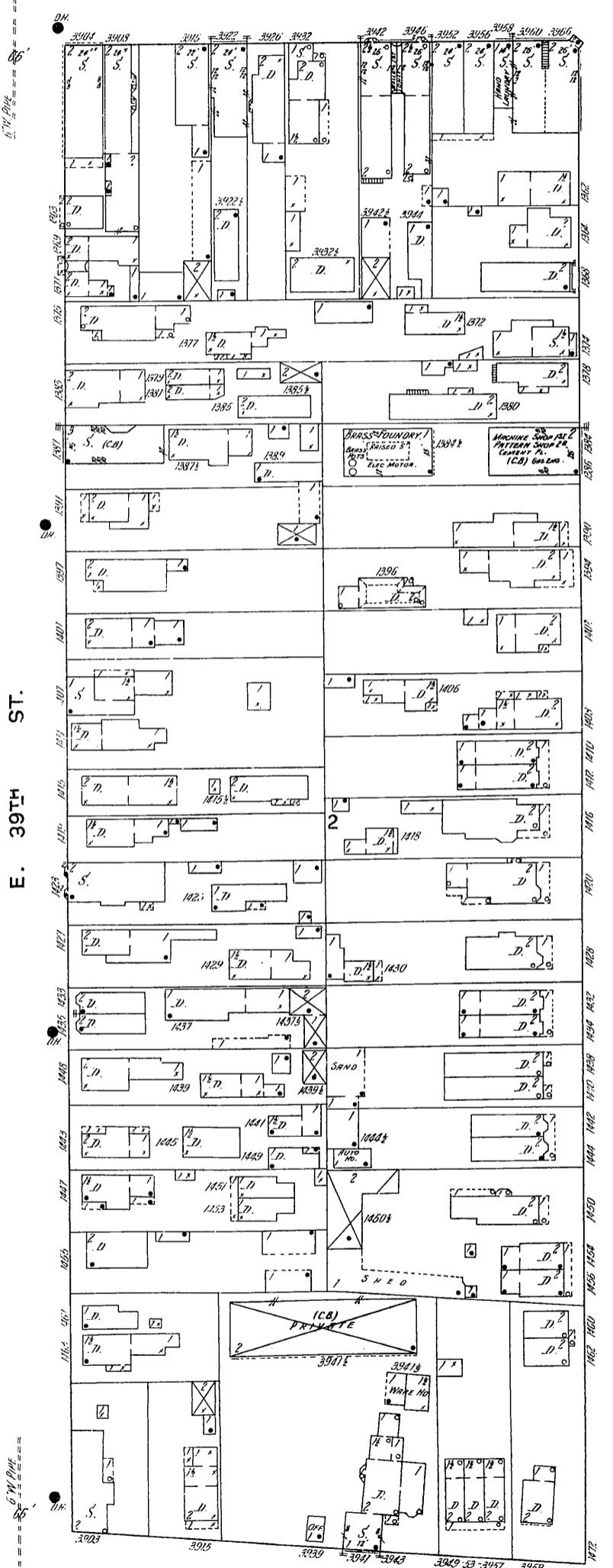
Scale of Feet.



73

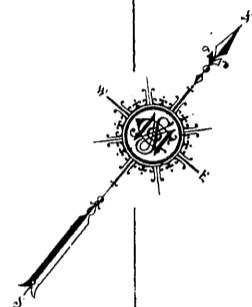
AV. N. E.

E. 39TH ST.



E. 40TH ST.

65



10" W. PIPE

12" W. PIPE

40" W. PIPE

6" W. PIPE

8" W. PIPE