

ST. CLAIR 50 AV. N. E.

66

65

67

E. 45TH ST.

E. 47TH ST.

E. 49TH ST.

ASYLUM Ct. N.E.

GEO. HUBERTY
No WATERMAN - POWER - ELEC.
1" D. GAS ENG. - HEAT - STEAM.
FUEL SANDUST. - LUM.
LIGHTS - ELEC. 1" D. - 2" V.P.
4" - 2" HING. WITH 1" HOSE
DIED AS SHOWN - CITY WATER
CHEM. EXT. - 25. DISTRIED
STAIRWAYS TRAPPED

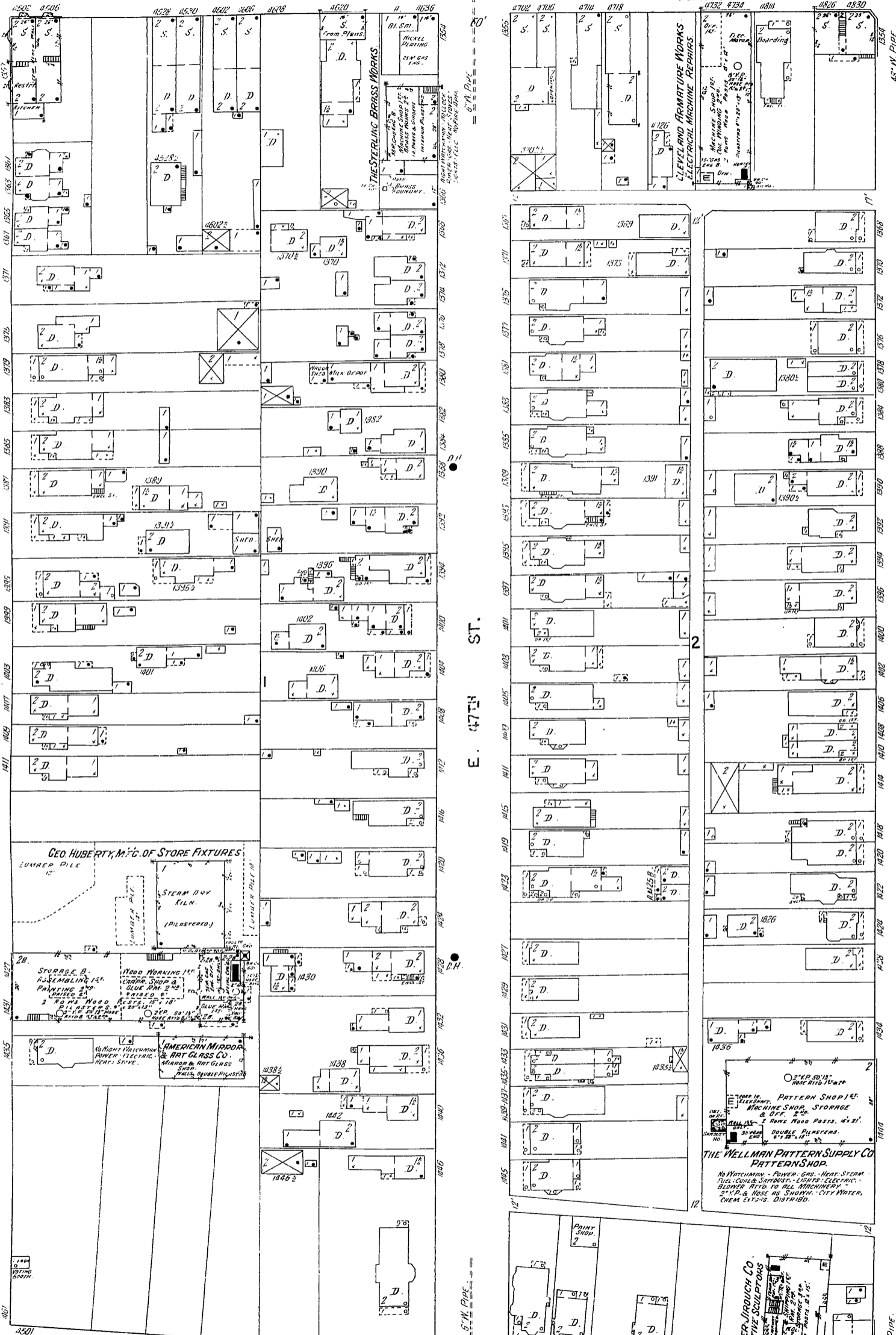
GEO. HUBERTY, MFG. OF STORE FIXTURES

STORAGE B.
ASSEMBLING 12"
PRINTING 2nd
WOOD WORKING 12"
CUTTING SHOP &
GLUE RHT 2nd
PAINTS &
2 ROWS WOOD BENCHES 15' x 18"
4" x 12" x 12" x 12" x 12" x 12"
DIED AS SHOWN - CITY WATER
CHEM. EXT. - 25. DISTRIED

AMERICAN MIRROR
ART GLASS CO.
MIRROR & HOT GLASS
SMO. PLY. QUARTZ PLASTER

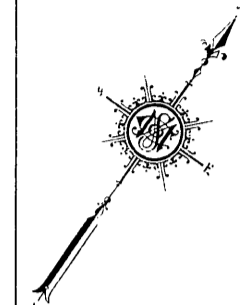
THE WELLMAN PATTERN SUPPLY CO
PATTERN SHOP
No WATERMAN - POWER - GAS - HEAT - STEAM
FUEL - LUMBER - SANDUST. - LIGHTS - ELECTRIC
BLOWER FIT TO ALL MACHINERY
2" V.P. & HOSE AS SHOWN - CITY WATER
CHEM. EXT. - 25. DISTRIED

THE FISHER JIROUCH CO.
DECORATIVE SCULPTORS
No WATERMAN - POWER - GAS - HEAT - STEAM
FUEL - LUMBER - SANDUST. - LIGHTS - ELECTRIC
BLOWER FIT TO ALL MACHINERY
2" V.P. & HOSE AS SHOWN - CITY WATER
CHEM. EXT. - 25. DISTRIED



Scale of Feet.

SUPERIOR 77 AV. N. E.



8\"/>

60\"/>

60\"/>

60\"/>

12\"/>

6\"/>

60\"/>

6\"/>

10\"/>

60\"/>

6\"/>