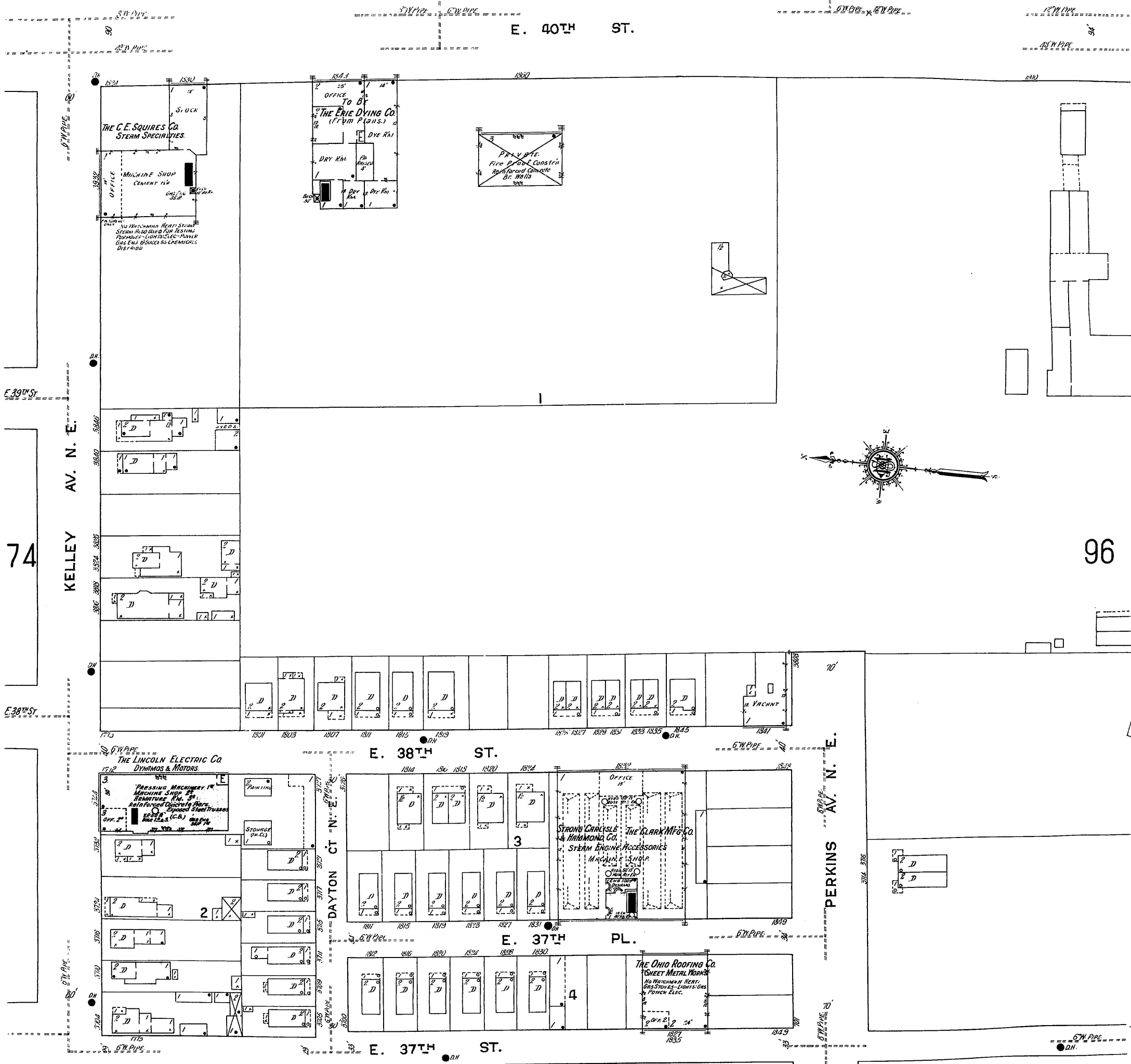


E. 40TH ST.



THE LINCOLN ELECTRIC CO.
 NIGHT & SUNDAY WATCHMAN CHICAGO CLERK
 5 STAR TRAYS HOOKY ROUNDS BURNI STEAM
 LIGHTS & POWER ELEC. LE. P. GAS ENGR.
 120' E. HOSE 11" S. W. 1/2 CITY WATER
 STANDARD CHEMS. DISTRIED

THE CLARK MFG CO. & HAMMOND CO.
 NO WATCHMAN HEAT & POWER STEAM
 LIGHTS ELEC. LE. P. GAS ENGR. 120' S. HOSE
 11" TO 4" RYD. CITY WATER

