

THE DANGLER STOVE CO. DIVISION, AMERICAN STOVE CO.

NIGHT & SUNDAY PATROLMAN, RAIN-FIRE TIME DETECTOR
STATION, 5 STATIONS HOURLY ROUNDS, 10 MIN. PER HOUR
HOT STEAM LIGHTS ELECTRICITY IN
AUTOMATIC SPRINKLERS THROUGHOUT, EXCEPT ON 10
MANUFACTURERS HEADS, SPACED BY 10'
SUPPLIED BY 1 1/4" CUMM. TO CITY MAIN & 2" SUBM. TO
PRESSURE MAINS, 10' HOURLY ROUNDS, 10 MIN. PER HOUR
RANGE SPRINKLER SYSTEM OF 10' HOURLY ROUNDS, 10 MIN. PER HOUR
DIVISION, AMERICAN STOVE CO. SHEET NO. 37
INDUSTRIAL & HOSE WORK BUCKETS & BARRIERS IN WATER
& CHEMICAL EXTINGUISHERS DISTRIBUTED

THE EXIDE BATTERY CO.

NIGHT & SUNDAY PATROLMAN, RAIN-FIRE TIME DETECTOR
STATION, 5 STATIONS HOURLY ROUNDS, 10 MIN. PER HOUR
HOT STEAM LIGHTS ELECTRICITY IN
AUTOMATIC SPRINKLERS THROUGHOUT, EXCEPT ON 10
MANUFACTURERS HEADS, SPACED BY 10'
SUPPLIED BY 1 1/4" CUMM. TO CITY MAIN & 2" SUBM. TO
PRESSURE MAINS, 10' HOURLY ROUNDS, 10 MIN. PER HOUR
RANGE SPRINKLER SYSTEM OF 10' HOURLY ROUNDS, 10 MIN. PER HOUR
DIVISION, AMERICAN STOVE CO. SHEET NO. 37
INDUSTRIAL & HOSE WORK BUCKETS & BARRIERS IN WATER
& CHEMICAL EXTINGUISHERS DISTRIBUTED

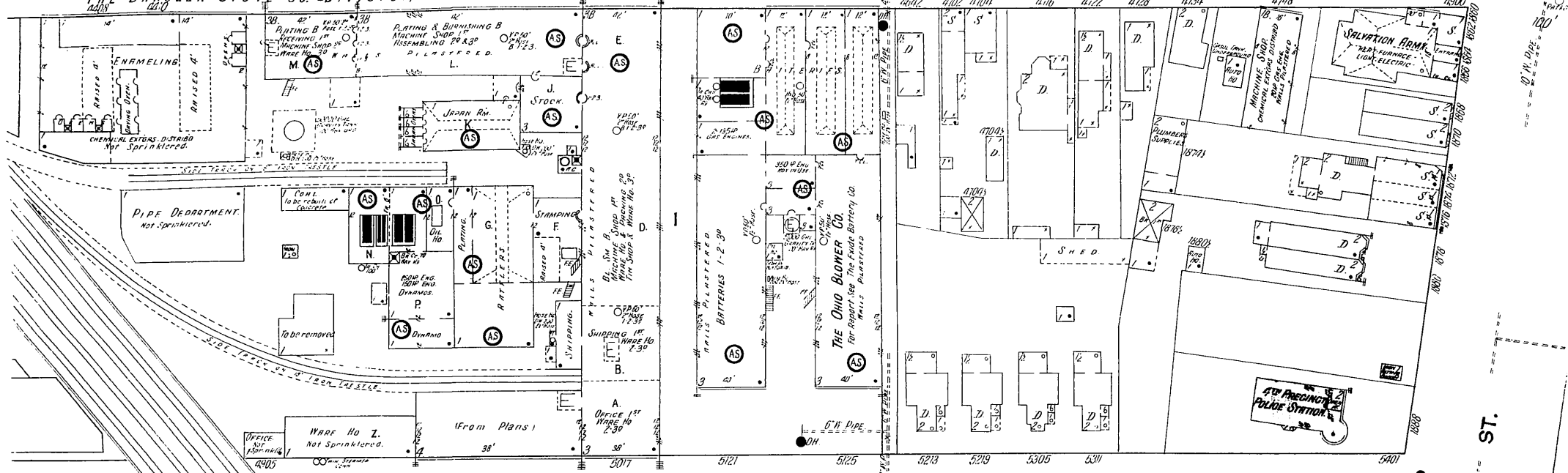
89

90

HOUGH AV. N. E.

THE DANGLER STOVE CO. DIVISION, AMERICAN STOVE CO.

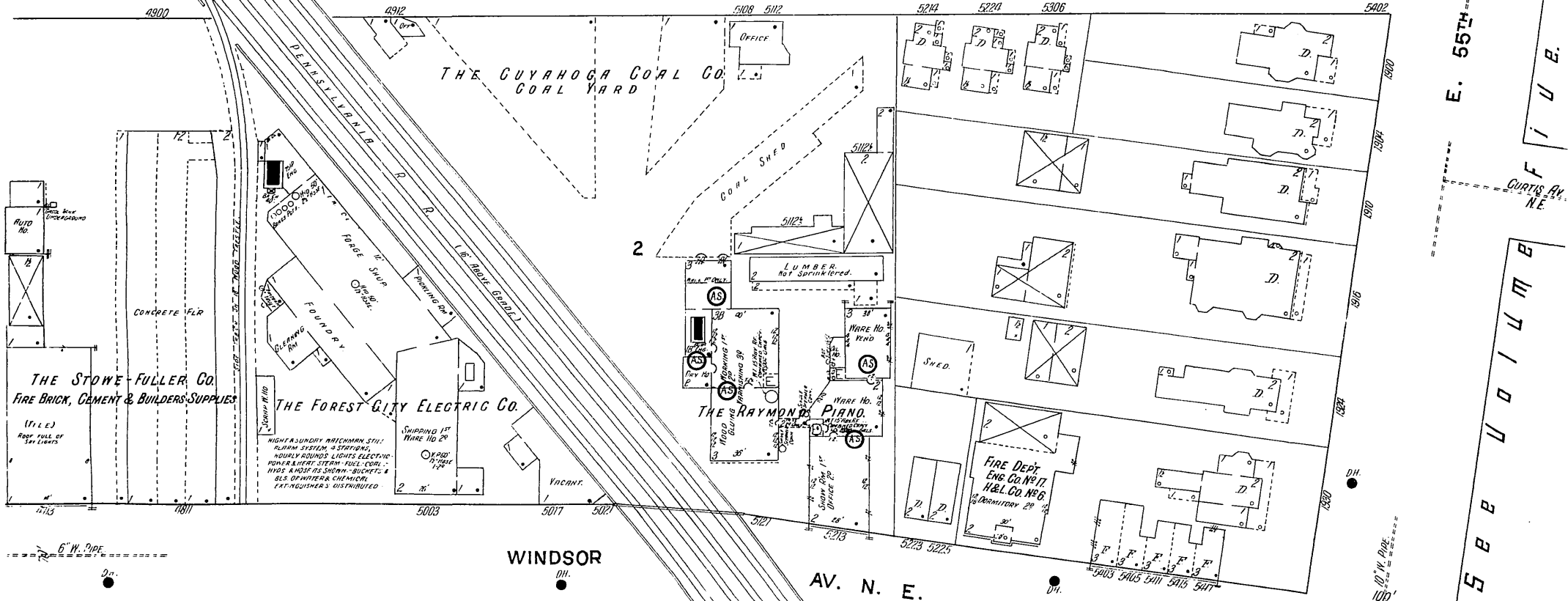
THE EXIDE BATTERY CO.



97

PERKINS AV. N. E.

THE CUYAHOGA COAL CO. COAL YARD



100

THE RAYMOND PIANO

NIGHT WATCHMAN, WINTER ONLY LIGHTS FILE
POWER & HEAT STEAM FUEL COAL
AUTOMATIC SPRINKLERS THROUGHOUT, EXCEPT
BUILDINGS SO MARKED ONLY SYSTEM
MANUFACTURERS HEADS, SPACED BY 10'
SUPPLIED BY 1 1/4" CUMM. TO CITY MAIN & 2"
GRAVITY TANKS, HOURLY ROUNDS, 10 MIN. PER HOUR
CAPACITY 1000 GALS. - EXTENSIVE CONNECTIONS
BUCKETS & BARRIERS OF WATER DISTRIBUTED

FIRE DEPT.

ENG. CO. NO. 17: 1 MEN, 4 HORSES,
METROPOLITAN 1 1/2 CLASS ENG.,
1000 G. WAGON, 1200 G. WAGON,
1000 G. WAGON
H. S. CO. NO. 17: 12 MEN, 3 HORSES,
1000 G. WAGON - 200 ASSISTANT
CHIEF, CHIEFS



Scale of Feet.

