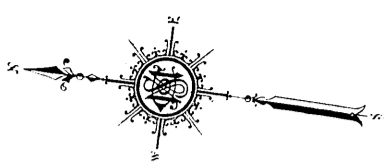
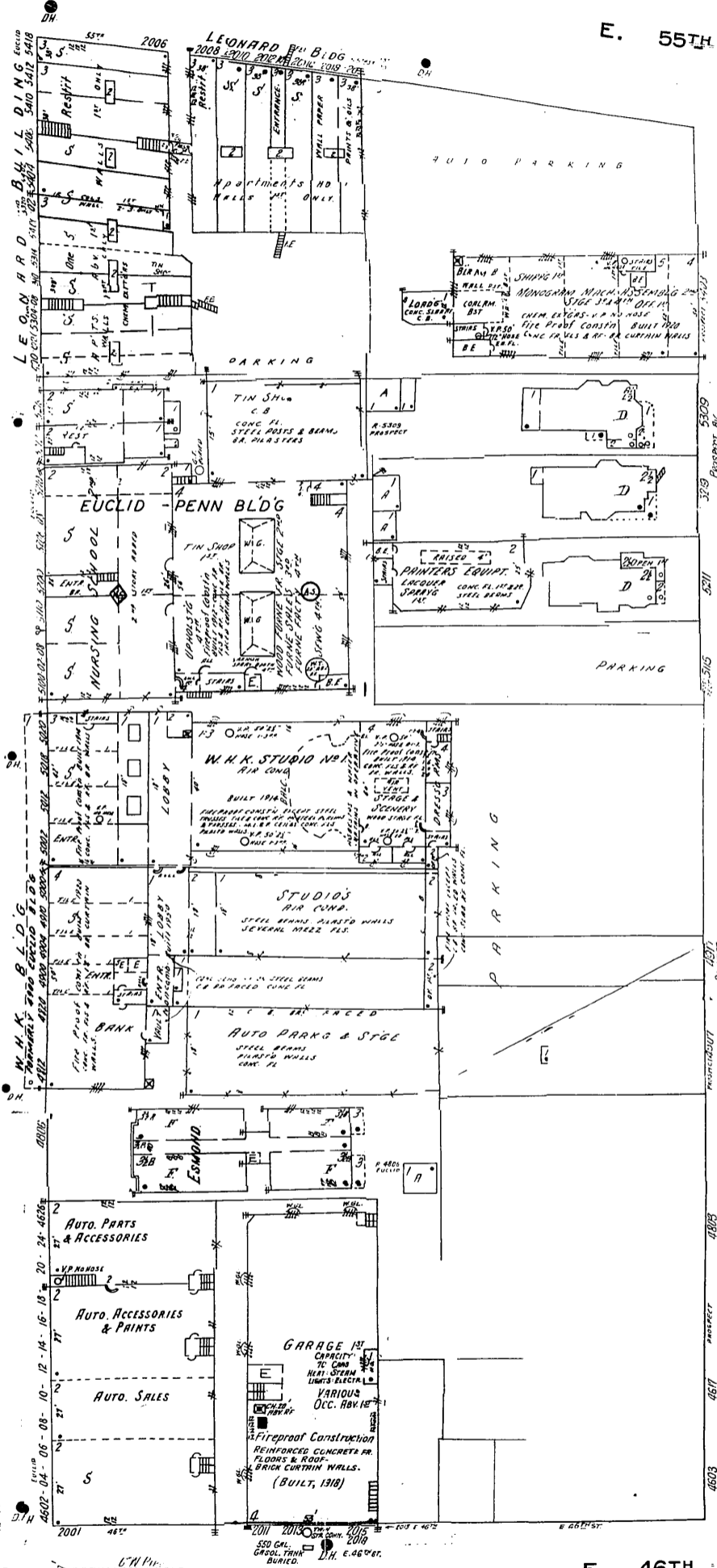


25

OHIO.018



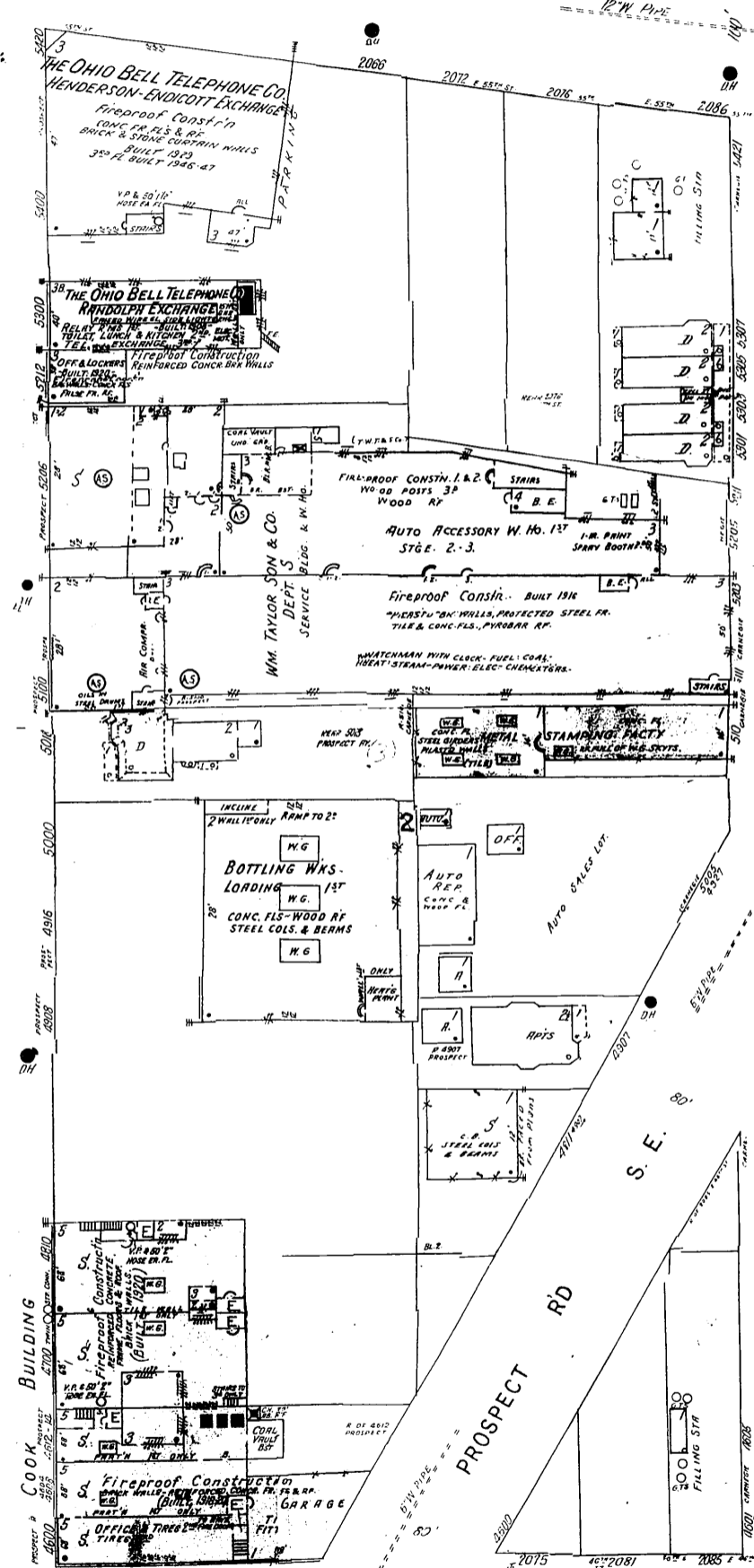
EUCLID-PENN BLDG  
1100 E 55TH ST  
NIGHT WATCHMAN, NEWSPAPER CLOSK  
STATIONS, HOUR BOUND, FUEL, COOK  
HEAT, LIGHTS, ELECT, CITY WATER  
BRINELL, AUTOMATS, DRINKLEAD IN  
DIPROOF SECTION ONLY, WAT. SYSTEM,  
SUPPLY BY 35000 GAL. CRAN. TANK ELEV.  
20'4". HIGHEST HEAD, PIPED 10' EACH  
WAY, TWIN STERMER CONV.



E. 55TH ST.

PROSPECT AV. S.E.

E. 46TH ST.



CARNEGIE AV. S.E.

26

Scale of Feet.

