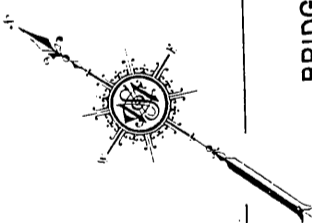
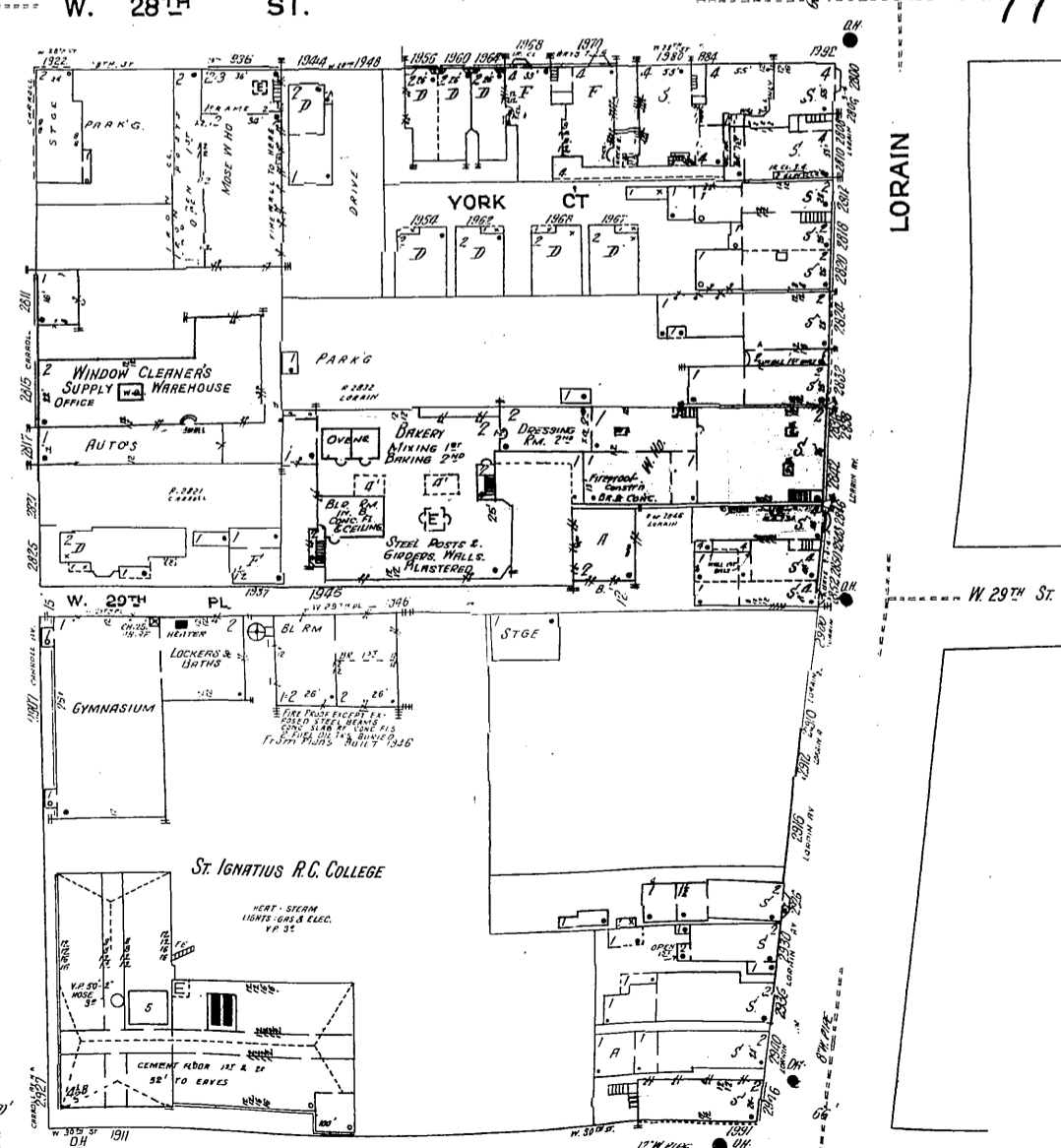
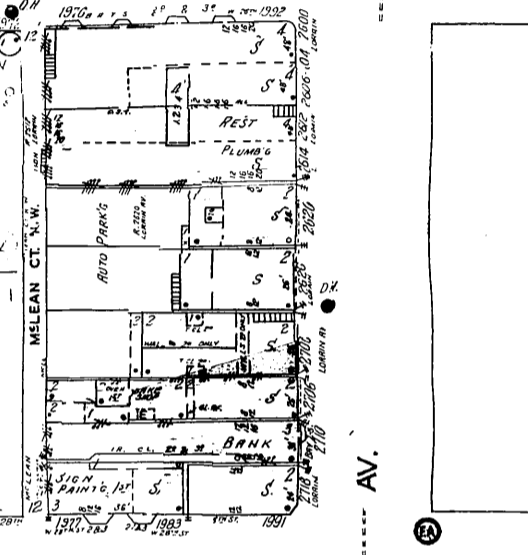
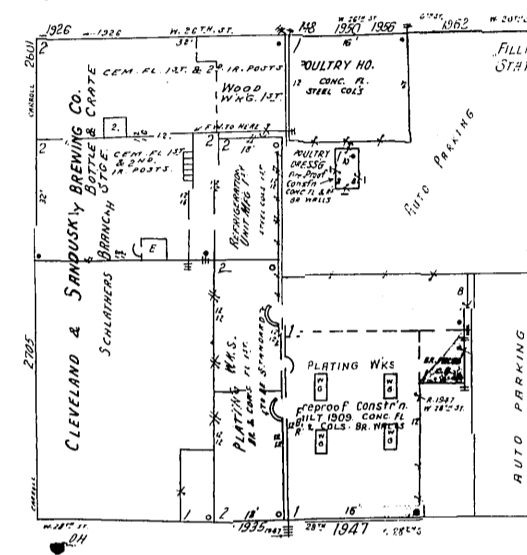
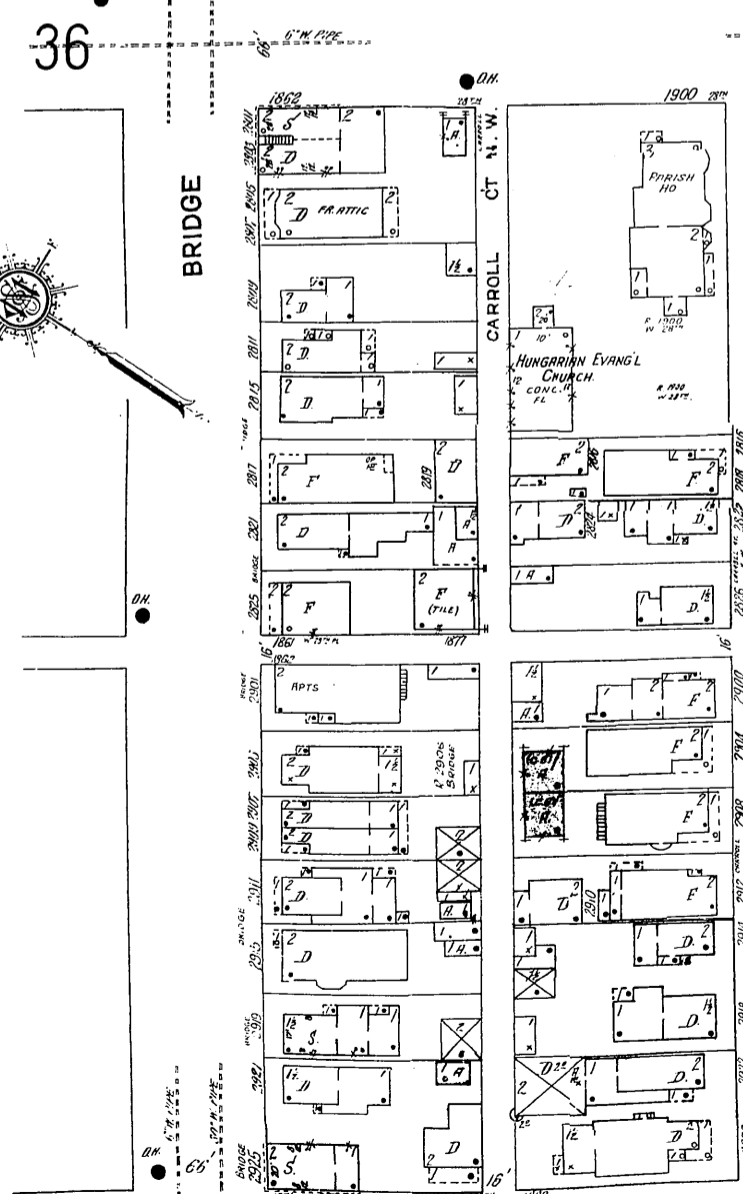
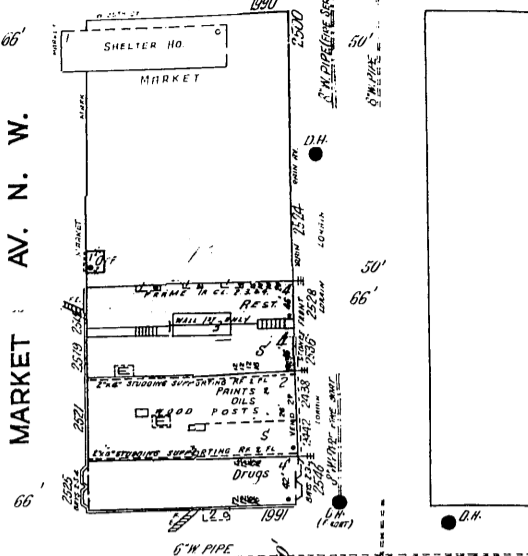
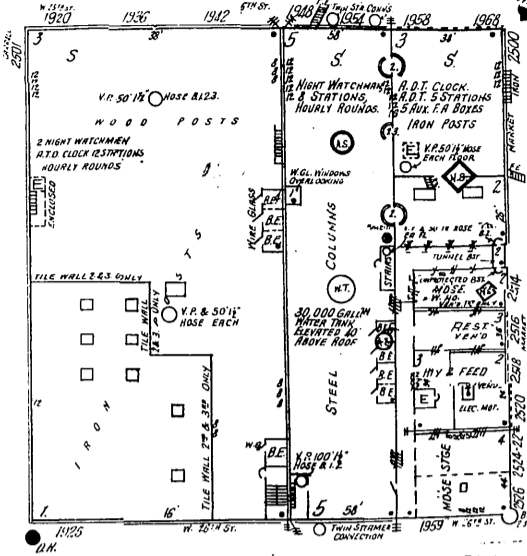
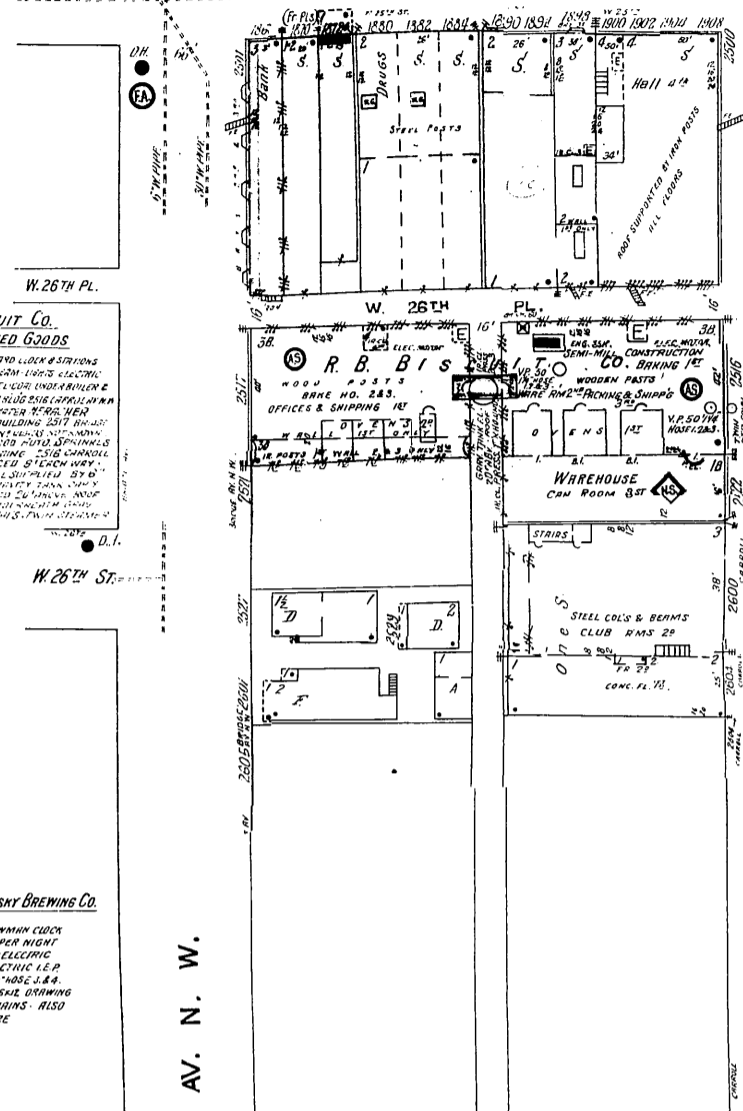


45

OHIO 019 47 W. 25TH ST.

R.B. BISCUIT CO.
MFRS OF BAKED GOODS
 10-TON STEAM-DRIVEN LOAN & STATIONS
 HEATED ROOMS HEAT STEAM LIGHTS ELECTRIC
 POWER STEAM BELLS FIVE-GAL. UNDER-FLOOR &
 2000 IN. D.W.S. 2" FOR WAREHOUSE 2500 G.P.M.
 300-100-100 CITY WATER HEATER HER
 AUTO SPRINKLER IN BUILDING 2507 BR-10-10
 40 N.W. WET SYSTEM IN BUILDING 2507
 SPACED 8" 8" 10" 12" 14" 16" 18" 20" 22" 24" 26" 28" 30" 32" 34" 36" 38" 40" 42" 44" 46" 48" 50" 52" 54" 56" 58" 60" 62" 64" 66" 68" 70" 72" 74" 76" 78" 80" 82" 84" 86" 88" 90" 92" 94" 96" 98" 100"
 ABOUT 200 FEET 2 1/2" DIA. 100' 20"
 CITY CONNECTION 100' 20" 100' 20"
 2 1/2" DIA. 100' 20" 100' 20"
 PRESSURE TANK 100' 20" 100' 20"
 TANK 100' 20" 100' 20"
 CONNECTION

CLEVELAND & SANDUSKY BREWING CO.
 NIGHT WATCHMEN NEWMAN CLOCK
 STATIONS SOUNDS PER NIGHT
 HEAT STEAM - LIGHTS ELECTRIC
 PUMPS SYSTEM & ELECTRIC L.P.
 100' IN BREF. NO. 50' 10" 100' 20"
 SAINT PAUL F.I.O. - 100' 20"
 WATER FROM CITY MAINS - ALSO
 CITY PRESSURE



Scale of Feet. 100

46 W. 30TH ST.