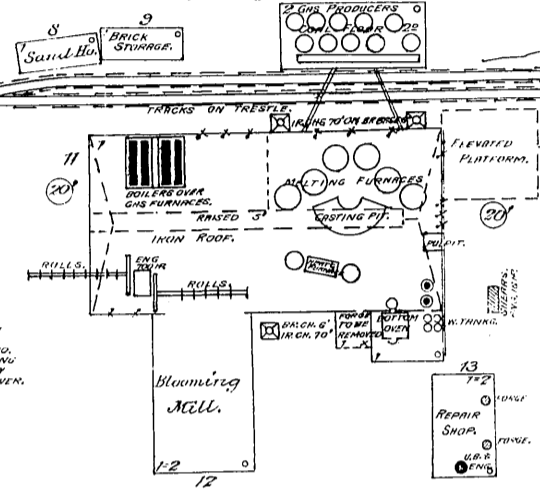
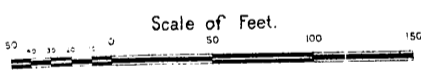


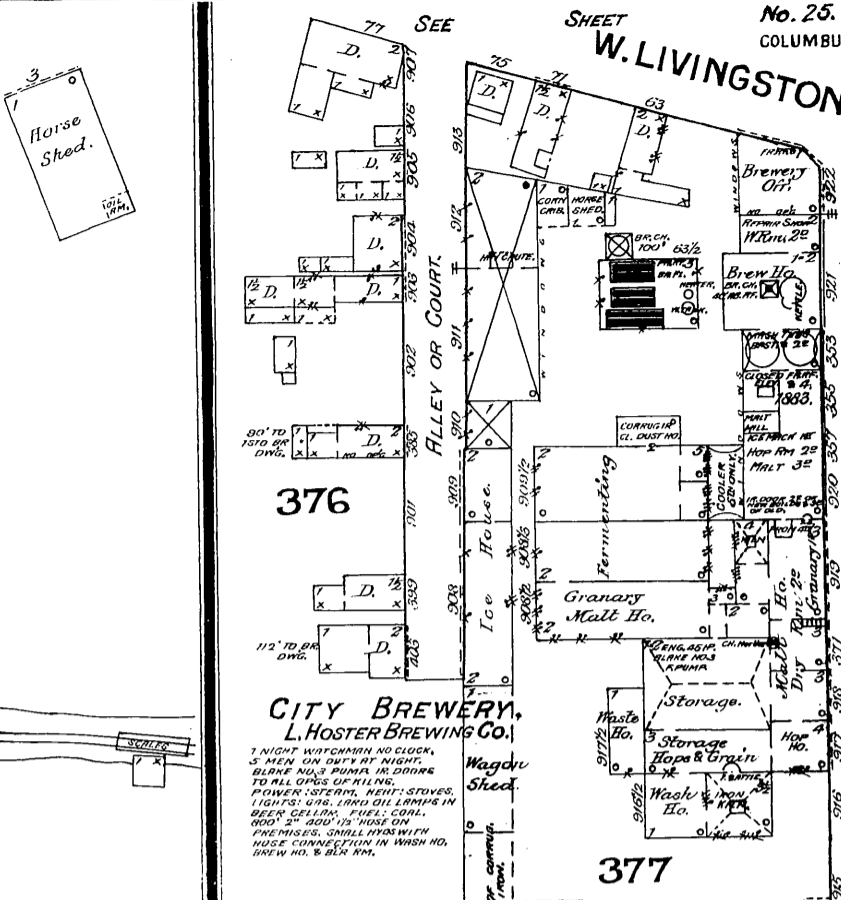
THE COLUMBUS STEEL CO. Buildings being built.



1. NIGHT & DAY WATCHMAN LOCK WITH 8 STAFFINGS TO FIVE 2 INCH DIAMETER NO. 5 IN MAIN BUILDING MELTING FURNACE TO BE SUPPLIED BY PUMPS WITH WATER FROM RIVER.

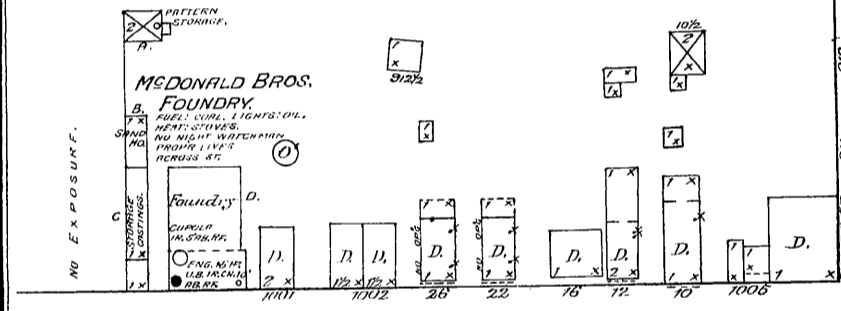


SHORT



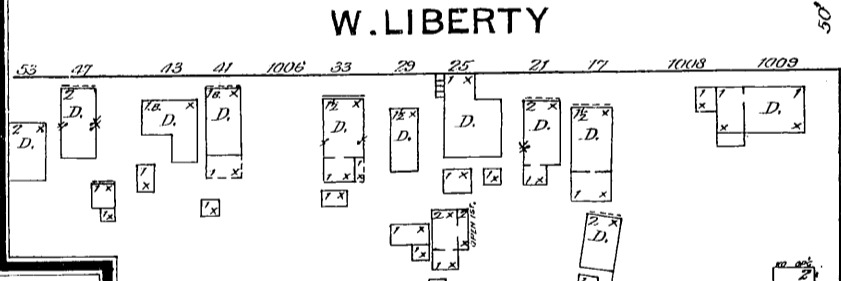
CITY BREWERY, L. HOSTER BREWING CO.

1. NIGHT WATCHMAN NO. 100, 5 MEN ON DUTY AT NIGHT. BLOW NO. 3 PUMPS IN DOORS TO ALL DEPTS. OF MILLING. POWER SYSTEM, HEAT STOVES, LIGHTS: GAS, LAMP OIL LAMPS IN BREW CELLARS. FUEL: COAL. 600' 2" 200' 1/2" HOSE ON PRESSURES. SMALL HOSE WITH HOSE CONNECTION IN WASH NO. 100. 100' NO. 2 1/2" HOSE.



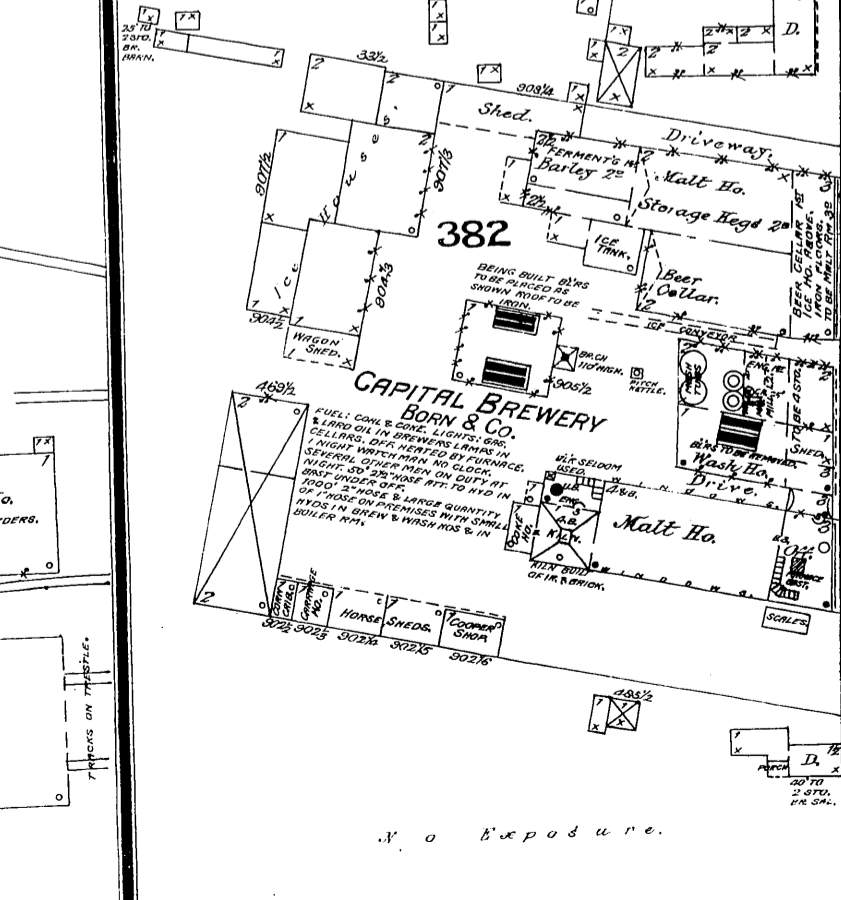
McDONALD BROS. FOUNDRY.

FUEL: COAL. LIGHTS: OIL. HEAT: STOVES. NO NIGHT WATCHMAN. FOUNDRY LIVE ACROSS ST.



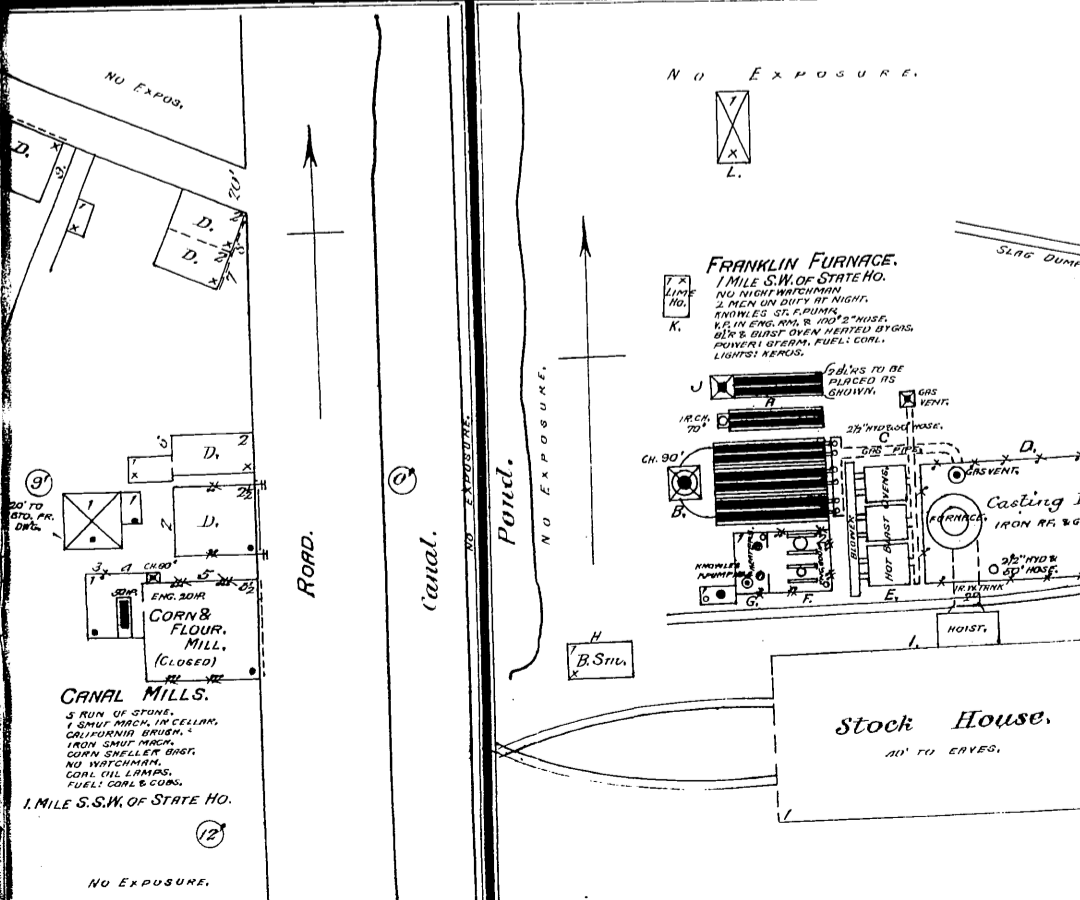
CAPITAL BREWERY BORN & CO.

FUEL: COAL & OIL. LIGHTS: GAS. CELLARS, OIL MEN'S LAMP. GENERAL WORKMAN NO. 100. NIGHT: OTHER MEN ON DUTY AT 100'. 2" HOSE & LARGER QUANTITY HOSE IN BREW & WASH NOS. 2 & 10.



FRANKLIN FURNACE. 1 MILE S.W. OF STATE HO.

NO NIGHT WATCHMAN. 2 MEN ON DUTY AT NIGHT. KNOWLES ST. PUMPS. 1/2 IN ENG. HOSE & 1 1/2" HOSE. 10" & 8" DIAM. OVEN HEATED BY GAS. POWER: STEAM. FUEL: COAL. LIGHTS: KEROSENE.



CANAL MILLS.

3 RUN OF STONE. 1 SHUT MACH. IN CELLAR. CALIFORNIA BRICK. IRON SHUT MACH. CORN SHELLER SHOT. NO WATCHMAN. CORN OIL LAMPS. FUEL: COAL & COKE. 1 MILE S.W. OF STATE HO.

NO EXPOSURE.