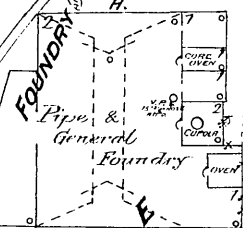
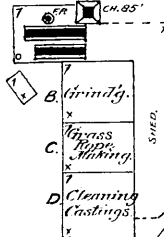
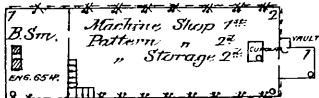


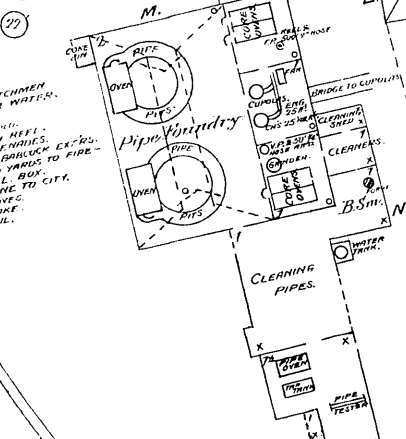
EMMICK HATCHER.
MFR. PATENT STEEL WAGON SKEIN.

NIGHT WATCHMAN & CLOCK
CITY & RIVER WATER.
300' x 40' HOSE.
HEAT: STOVES.
FUEL: COAL & OIL.
NO LIGHTS.
TELEPHONE TO CITY.



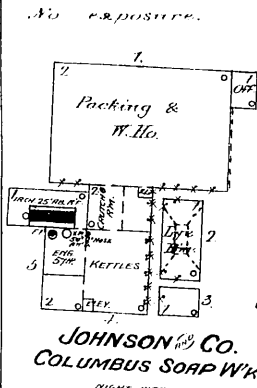
1/2 Mile N.W. of State Ho.

GAS WATER-PIPE M'FY.



ABOUT 400' TO COLUMBUS STEEL CO.

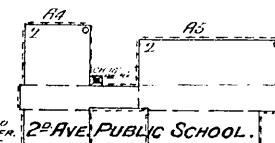
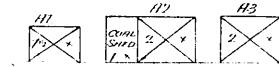
SEE SHEET No 27.



JOHNSON CO.
COLUMBUS SOAP WKS.

NIGHT WATCHMAN.
30' x 2' HOSE.
100' x 2' TO BE ADDED.
RIVER & WELL WATER.
FUEL: COAL.
LIGHTS: OIL.

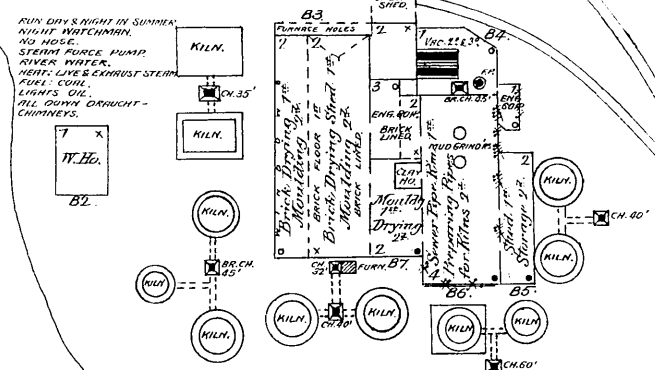
DETACHED DWG'S ON 1ST FLOOR



HEAT: 5 PLUMBERS' GAS.
WINDOWS ALL SIDES.

2ND AVE.

WASSALL FIRE CLAY CO.

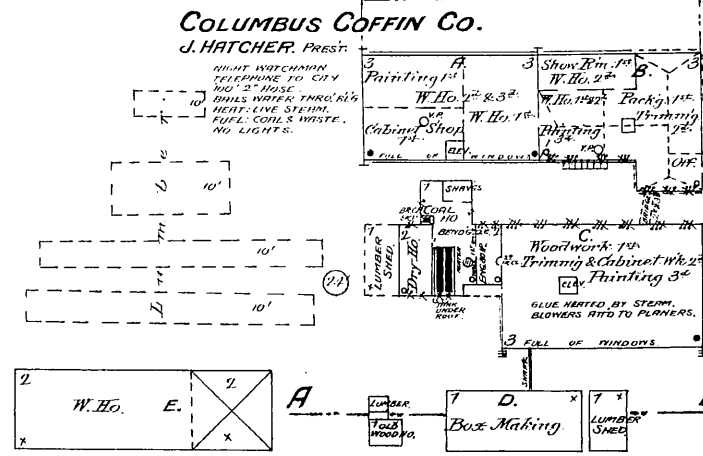


RUN DAYS NIGHT BY SUMMER.
NIGHT WATCHMAN.
NO HOSE.
STEAM FORCE PUMP.
RIVER WATER.
HEAT: LIVE & EXHAUST STEAM.
FUEL: COAL.
LIGHTS: OIL.
ALL QUINN DRAUGHT-CHIMNEYS.

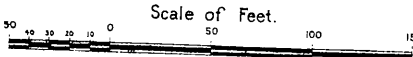
COLUMBUS COFFIN CO.

J. HATCHER, PRES.

NIGHT WATCHMAN.
TELEPHONE TO CITY.
100' x 2' HOSE.
RIVER WATER THROUGH'S.
HEAT: LIVE STEAM.
FUEL: COAL & WASTE.
NO LIGHTS.



SEE ABOVE.



River.

Oleantagy

OHIO

River beyond Oleantagy

