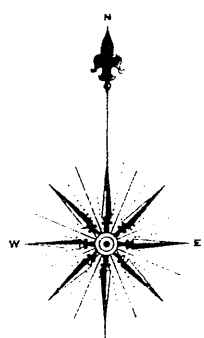


P.C. AND ST. L. R.R.  
ROUND HO.

BRODBELT LANE



560

DUBLIN TURNPIKE

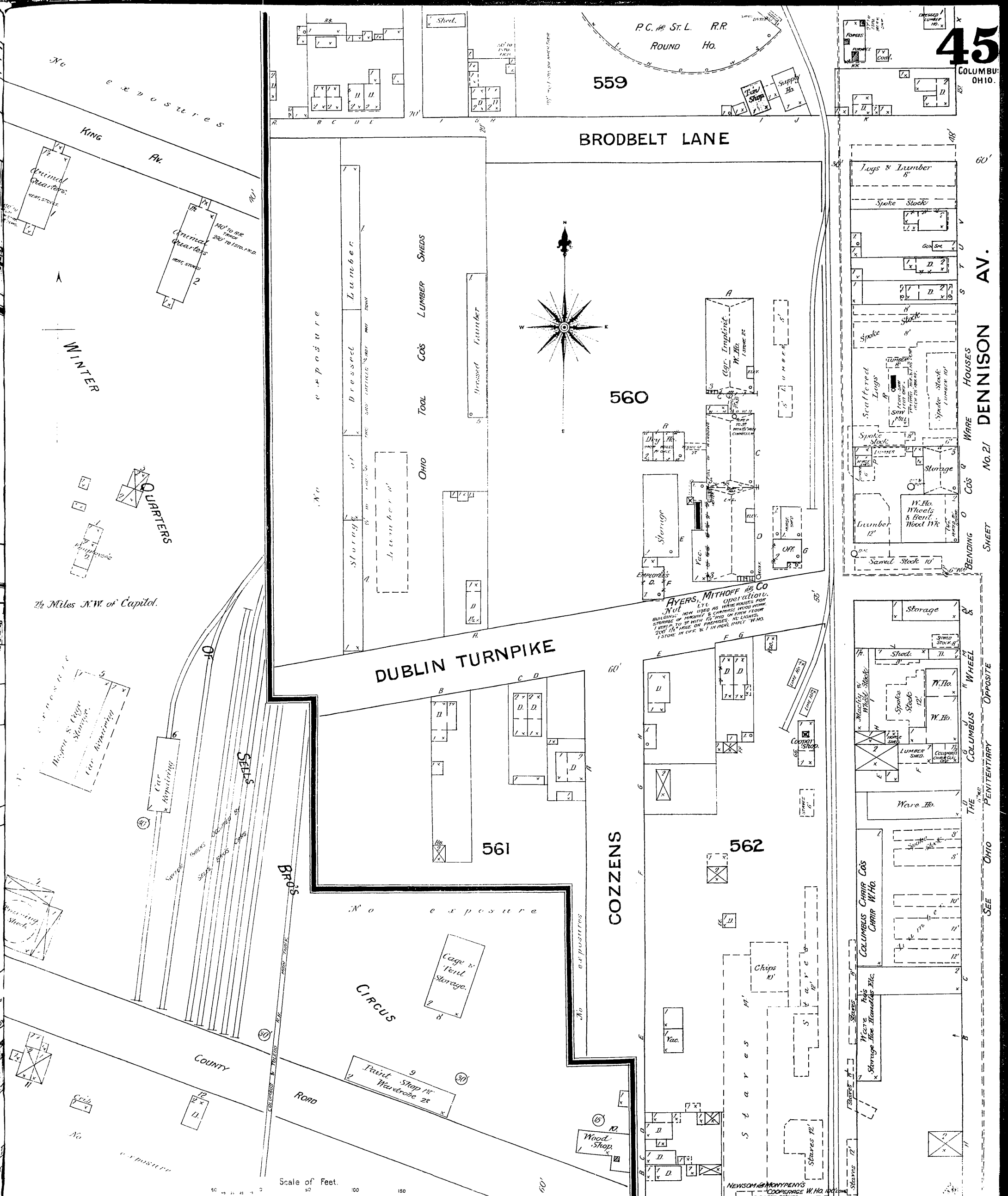
561

COZZENS

562

AYER'S, MITCHELL & CO  
Nut  
LUMBER SHED  
BUILDING NOW USED AS WARE HOUSE FOR  
STORAGE OF MACHINERY & CHAINSAW WOOD WORK  
1 1/2" x 10" x 10" IN FLOOR FLOOR  
1 1/2" x 10" x 10" IN FLOOR FLOOR  
200' IN CASE IN FLOOR IMPLY 1 1/2" HO.  
1 STORE IN CASE IN FLOOR IMPLY 1 1/2" HO.

Scale of Feet. 50 100 150



1/2 Miles N.W. of Capital.

KING AV

WINTER

QUARTERS

Car Repairing

SALES

BRIS

CIRCUS

COUNTY

ROAD

NEWSOM & MONTPEY'S  
COOPERAGE W. HO. 100  
PRINTING ON STEEL PLATE