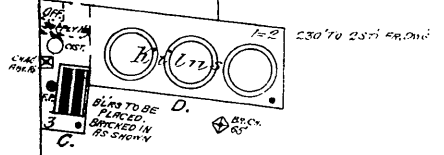


48

COLUMBUS OHIO

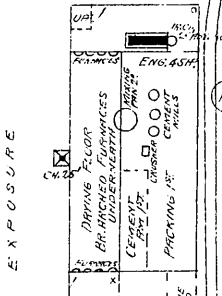
F. O. JONES & CO. TILE WKS

FUEL: COAL & SLACK, LIGHT OIL, LIGHT STEAM, PIPES PROTECTED, SMALL F.P. TO BE RINCED AS SHOWN, SMALL QUANTITY OF WOOD.



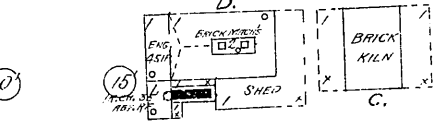
THE PORTLAND CEMENT WKS

FUEL: COAL, LIGHT OIL, HEAT, 1 STOVE IN OFF. & FURNACE UNDER DRYING FL. 1" HD. CITY WATER & 2 1/2" HD. HOSE.



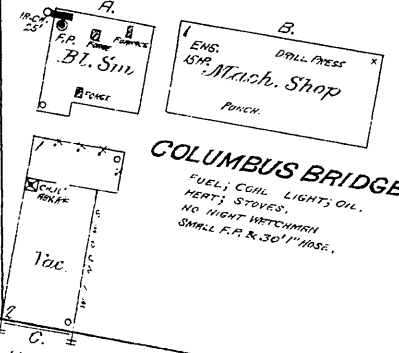
THE WHITTAKER BRICK CO.

FUEL: COAL, LIGHT OIL, HEAT, 1 STOVE, 1 NIGHT WATCHMAN.



COLUMBUS BRIDGE CO.

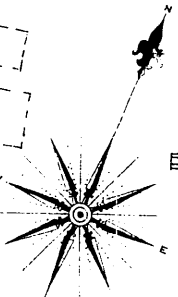
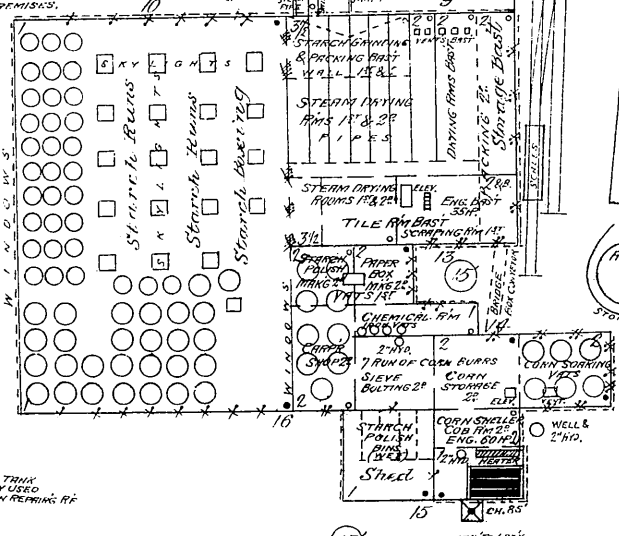
FUEL: COAL, LIGHT OIL, HEAT, STOVES, NO NIGHT WATCHMAN, SMALL F.P. & 30" HD. HOSE.



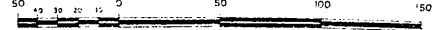
JULIUS J. WOOD STARCH CO.

Situated 2 1/2 Miles S. of Capitol.

1 NIGHT WATCHMAN, 3 MEN ON DUTY AT NIGHT, HEAT, LIVE & EXHAUST STEAM, FUEL, SHAVES COBS & COAL, LIGHTS, LAMP OIL IN LANTERNS & SMALL OPEN LAMPS, 3 DOZ. JARROU MIND GRENADES, WATER FOR WORKS IS SUPPLIED BY A KNOWLES F.P. WITH 6" DISCHARGE PIPE, WHICH DRAWS FROM DRIVEN WELLS, TWO 2 1/2" HD. IN MAIN BLDG & 1 OUTSIDE OF SAME ALSO IN EN. BLDG, ABOUT 50' OF 2 1/2" HD. HOSE ON PREMISES, ABOUT 150 EMPLOYEES.



Scale of Feet.



E. RICH AV.

570

E. MAIN

LANE (TO S. HIGH ST.)

C. & S. ST. R.R.

TEMPORARY CORN CRIBS CONSTRUCTED ON LEASE RIGHTS

