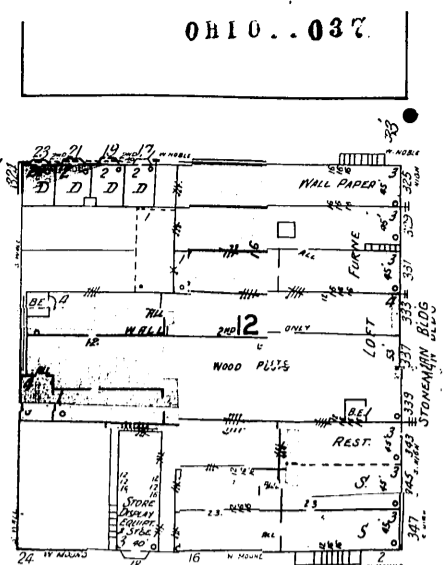
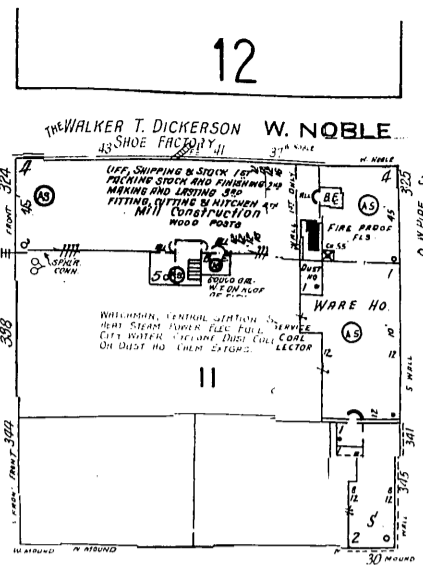
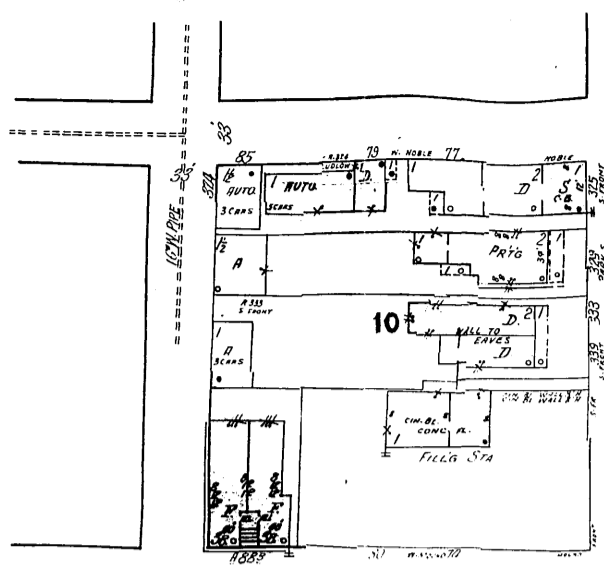


OHIO...037

(1920)  
COLUMBUS, O. Vol. I

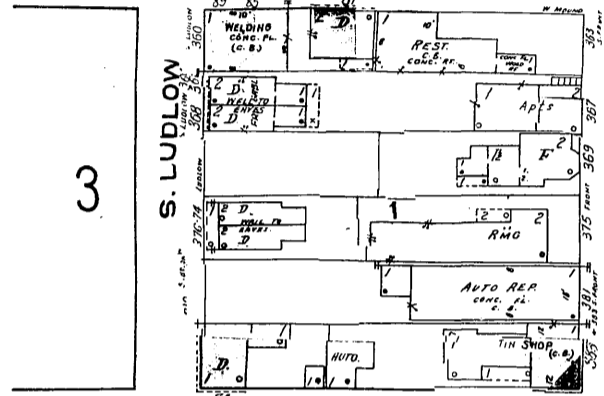
E. NOBLE ST.  
4  
(6-8 Vol. I)



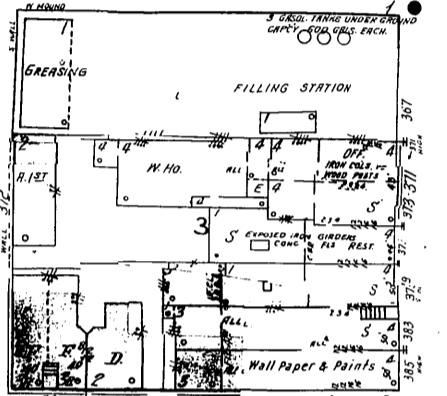
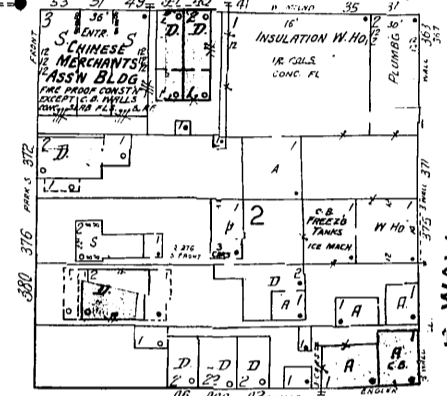
14



W. MOUND

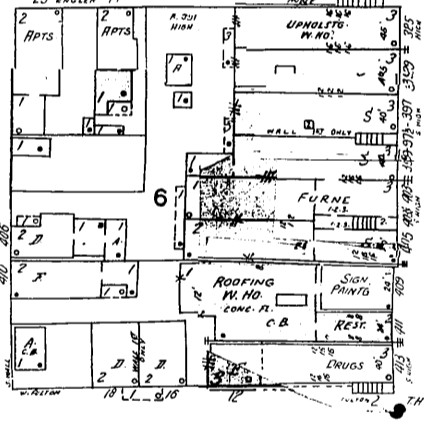
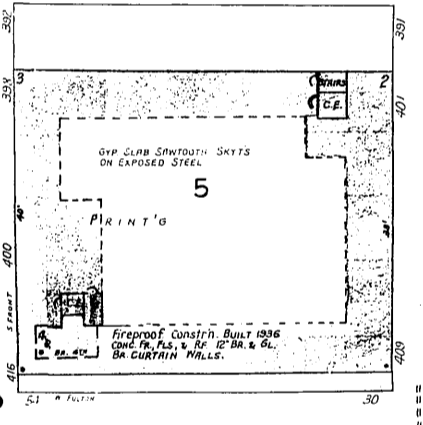
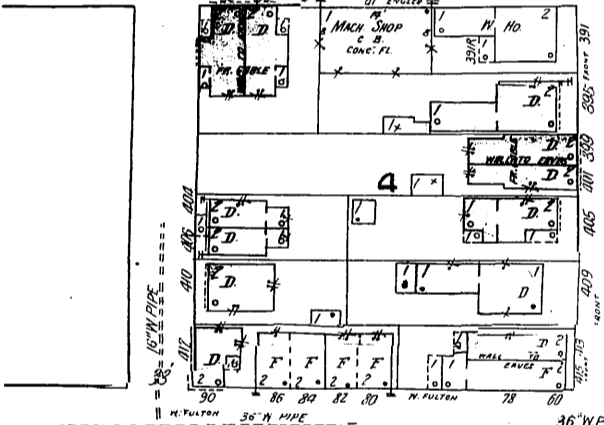


S. FRONT (PARK S)



S. HIGH

W. ENGLER

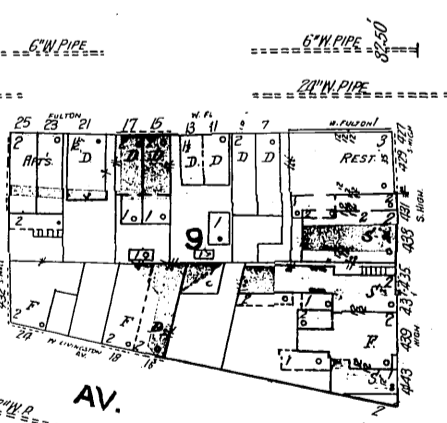
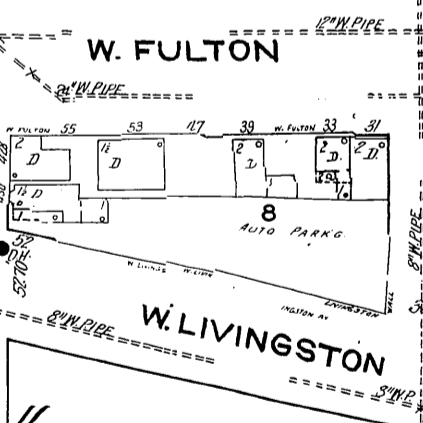
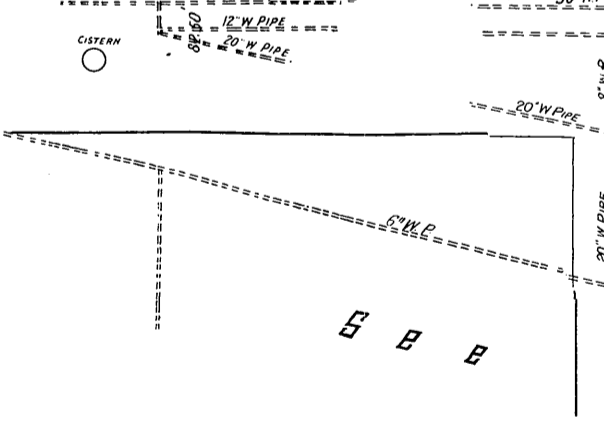


E. ENGLER ST.

5

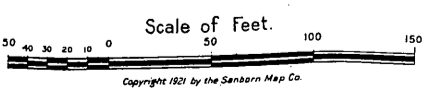
E. FULTON ST.

W. FULTON



E. LIVINGSTON AV.

W. LIVINGSTON AV.



Copyright 1921 by the Sanborn Map Co.