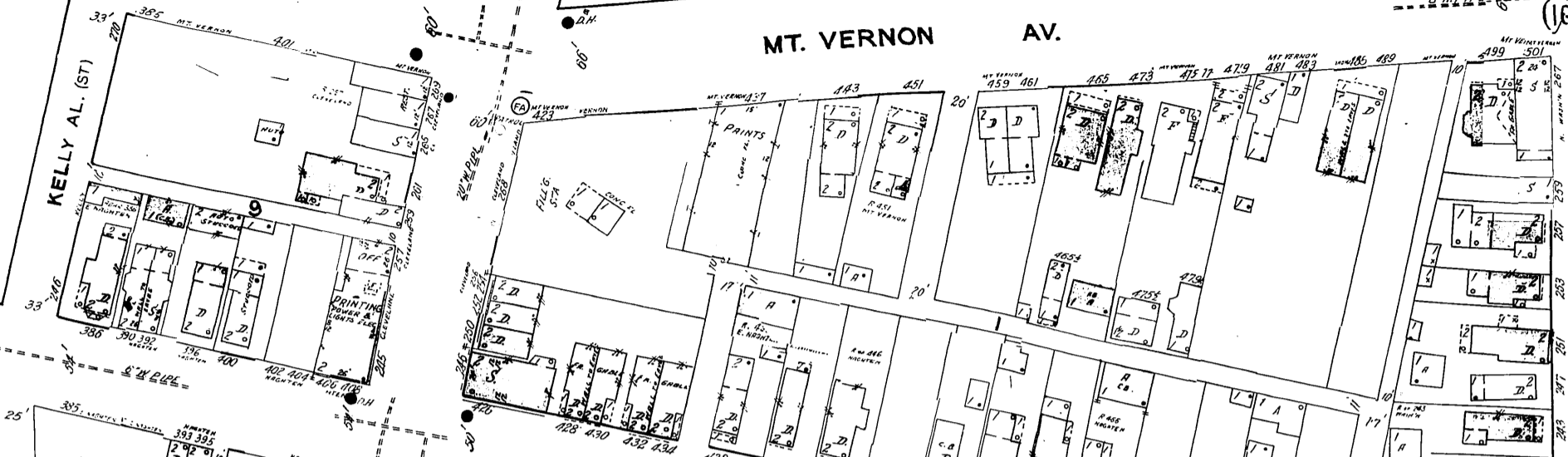


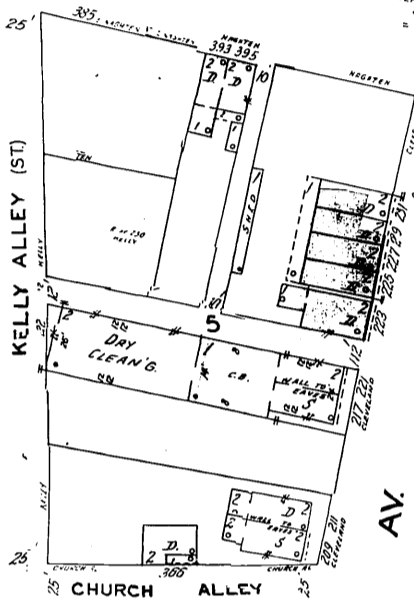
69

MT. VERNON AV.

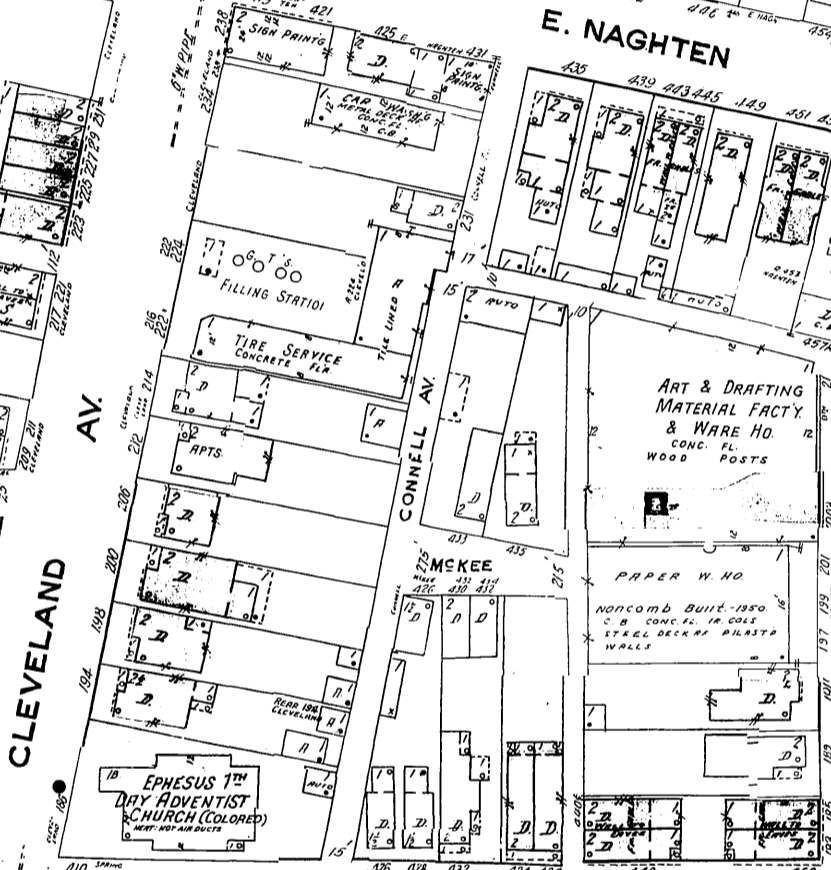
KELLY AL. (ST)



E. NAGHTEN

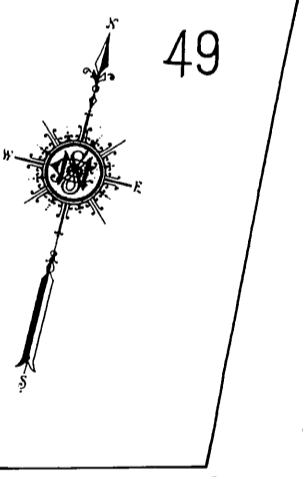


CLEVELAND AV.

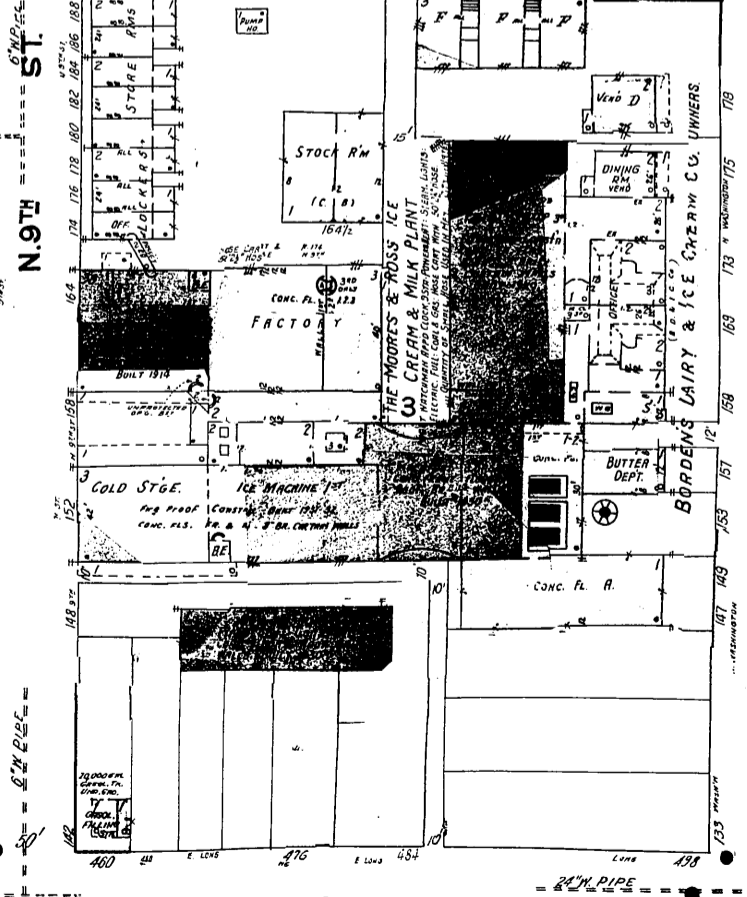


THE MOORES & ROSS PRIVATE GARAGE

E. SPRING

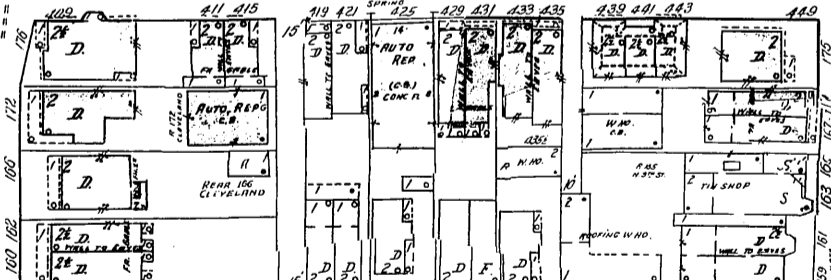


E. SPRING

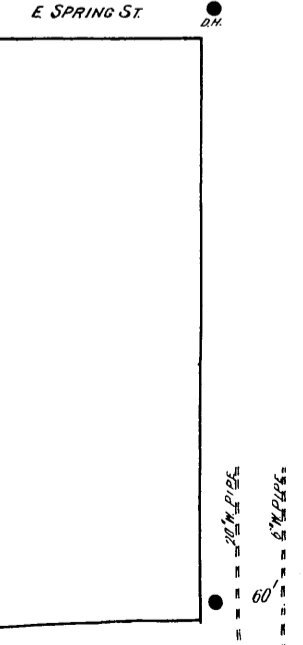


N 9TH ST

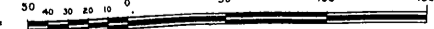
E. LAFAYETTE (KIEFER AV.)



E. LONG



Scale of Feet.



Copyright 1931 by the Sanborn Map Co.

39

40

51

N. WASHINGTON AV.

