

(520) OHIO 1941
COLUMBUS, O VOL 5
523

515

523

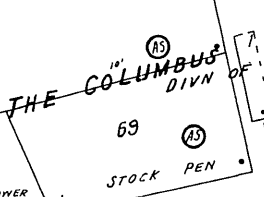
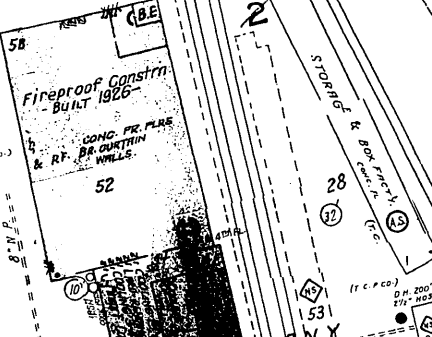
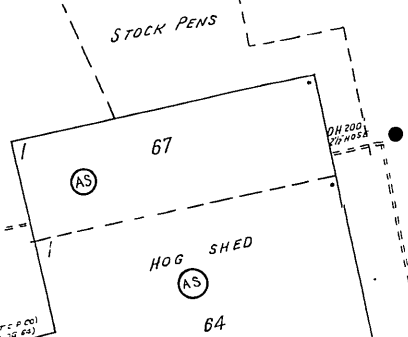
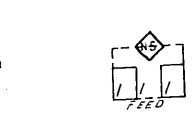
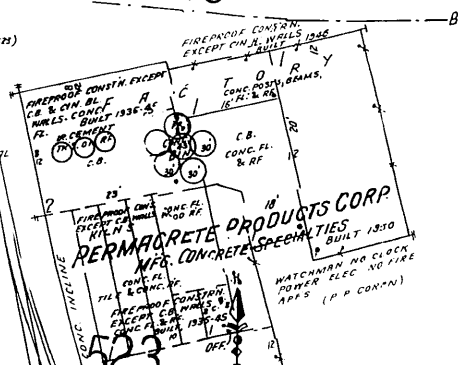
W. BARTHMAN

AV 515

524

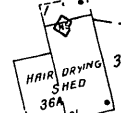
APPROX S. HIGH

SEE VOL. 5A

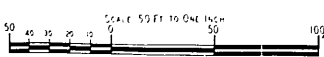


THE COLUMBUS PACKING COMPANY
SLAUGHTER HO. & PACKING
WATCHMAN CENT. SHT. SERVICE - LIGHTS - ELEC. - H.P. HEAT & POWER
STEAM - FUEL COAL - CITY WATER - CHEM. EXTENS. - 4" & 8" W.C. HOSE AS SHOWN - 4 REFRIGERATING MACHS. COMBINED CAPCY 600 TON -
STORY HEIGHTS OF SLAUGHTER HO. & ALL CONNTD. BLDGS. ARE TAKEN FROM THE 10' GROUND LEVEL -
FENCED RISK

STOCK PENS.
(P.C.F.CO.)



TERRITORY SHOWN ON THIS SECTION OF SHEET OUTSIDE OF CORPORATE LIMITS
MARION TWP.



S E E V O L U M E

