

MAD RIVER

DAYTON WATER WKS 245

OTTAWA STREET

22

STREET

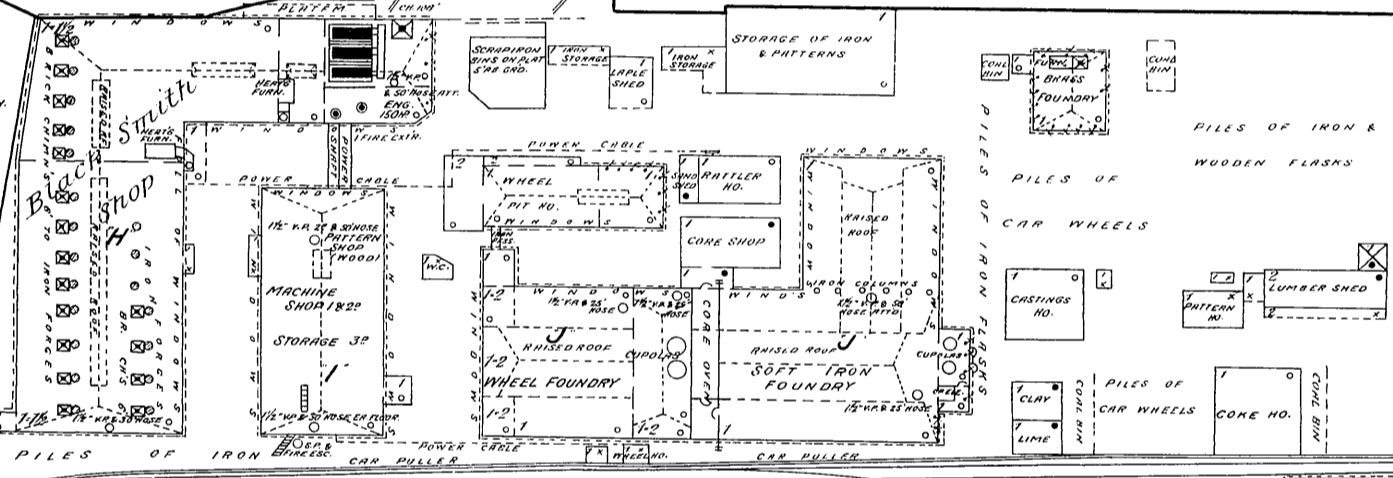
DAYTON SCREW CO. 246

248

23

Miami Canal Locks

Extension

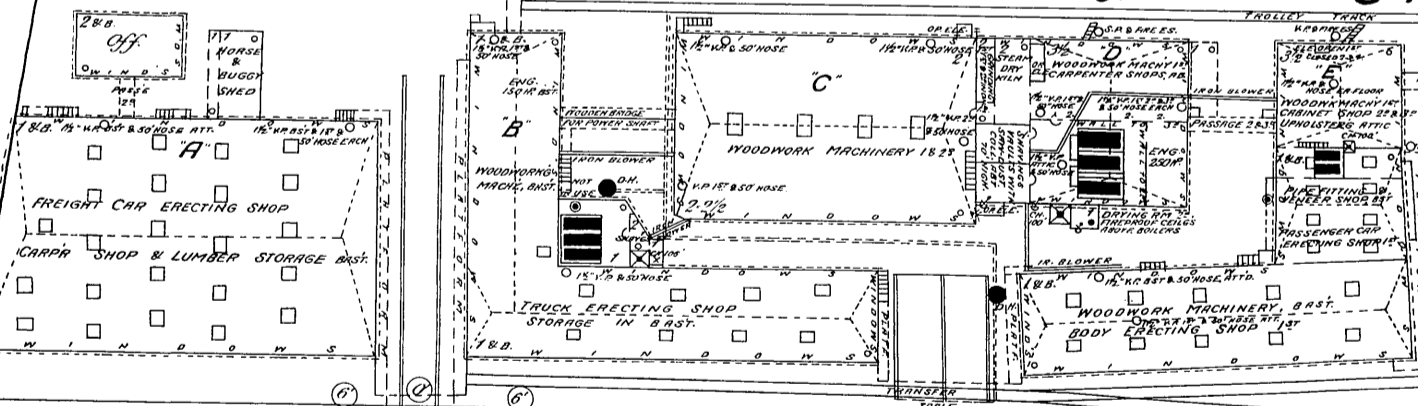


E. MONUMENT AVE. OR E. WATER ST.

THE BARNEY & SMITH 247

22

KEOWEE



JNO. A. MURPHY'S COAL YD. Coal Shed

E. FIRST

18

KEEP 2 NIGHT & SUNDAY WATCHMEN. ELECTRIC CLOCK. IS KEYS. FUEL COAL & SHAVES. HEAT STEAM, EXCEPT STOVES IN FOUNDRIES. 27 1/2" R-PIPES WITH 3" HOSE ATTACHMENTS IN BUILDINGS. 3 OUTSIDE STAND PIPES THOSE WITH 1200' OF HOSE. 35 AIRCOX FIRE EXTINGUISHERS & LARGE NUMBER OF HAND GRENADES DISTRIBUTED OVER ALL BUILDINGS. EMPLOY ABOUT 2000 HANDS.