

24

MARKER STREET

STREET

252

253

TROY ST.

PLANE ST.

DAYTON AND IRONTON R.R.

BOSTON CAR TRUST
GEO. WILLIAM BALLOU TRUSTEE

CAR SHED

25' TO R.R. CAR SHED

E. FIRST ST.

ST.

MARKER STREET

STREET

255

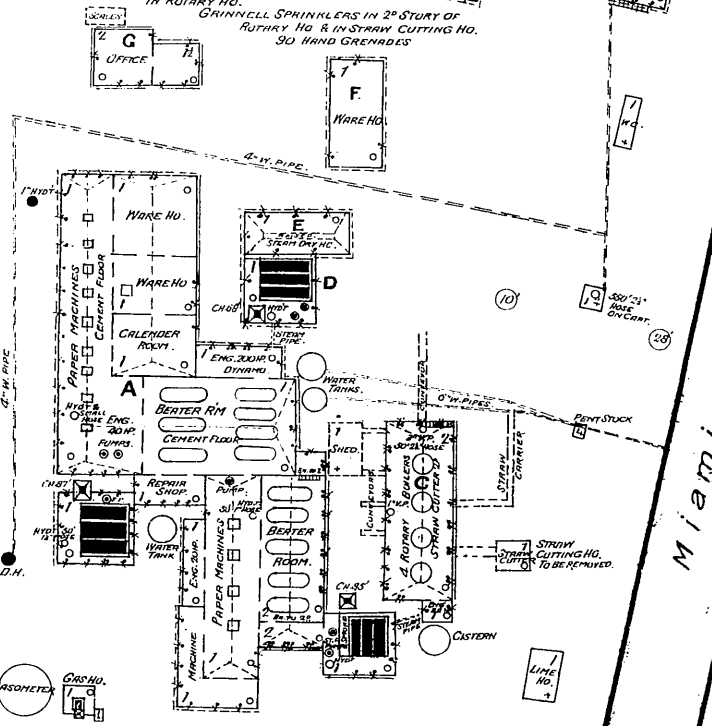
Mad River

C. L. HAWES COMPANY

AQUEDUCT MILLS

MAKERS STEAM DRIED STRAW BOARDS

RUN NIGHT & DAY - CONSTANT WATCHMAN - NO CLOCK
11 1/2" STEAM - ONE STORY IN OFFICE & MACHINE RM
LIGHTS GAS MADE ON PREMISES & ELECTRIC
CITY WATER & STEAM PLUMBS - TWO FIRE FLIES
500' 2 1/2" HOSE ON CART - 300' 1" HOSE
HIGHS & SMALL HOSE IN EACH BOILER NO. & MACHINE RM
1" V. PIPE & 3" V. PIPE WITH HOSE ATTACHED TO EACH
IN ROTARY NO.
GRINNELL SPRINKLERS IN 2ND STORY OF
ROTARY NO. & IN STRAW CUTTING NO.
30 HAND GRENADES



Miami Canal

Mad River

BROWNELL & CO.
BOILER WORKS

STREET

N
PAPER STOCK W. HO.
INCL. ALL STES