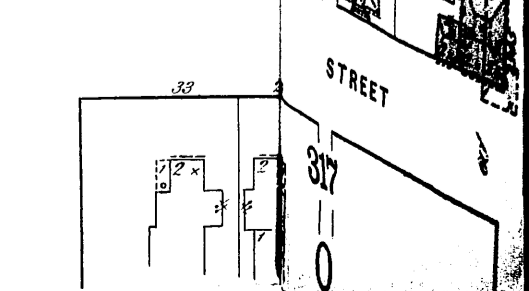
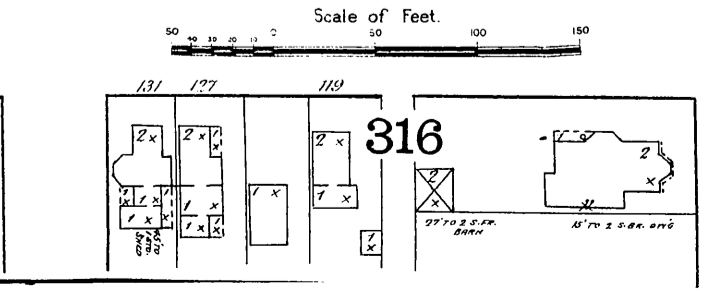
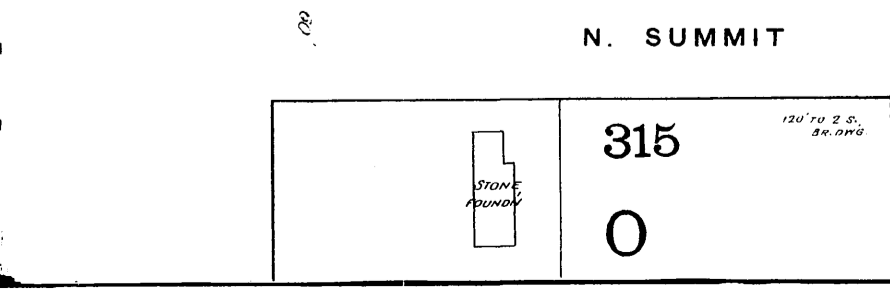
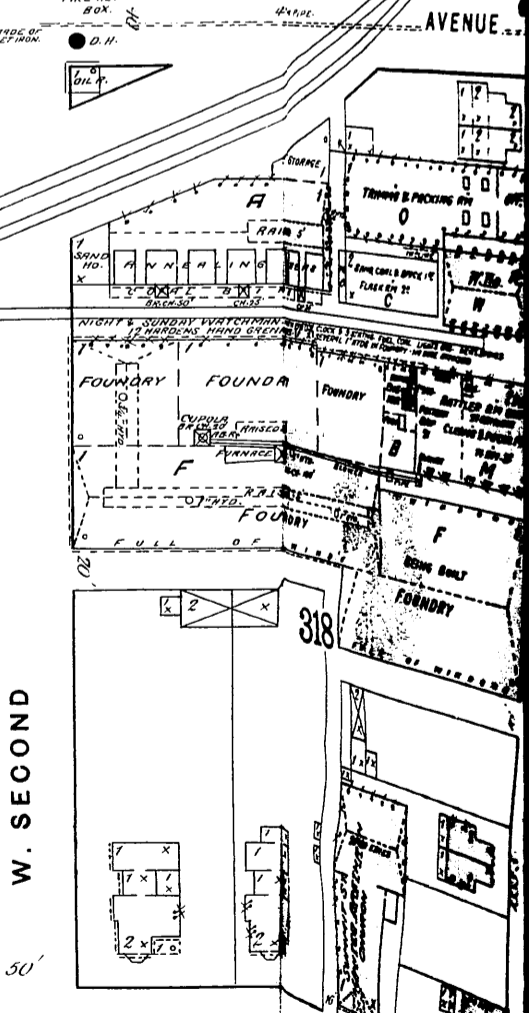
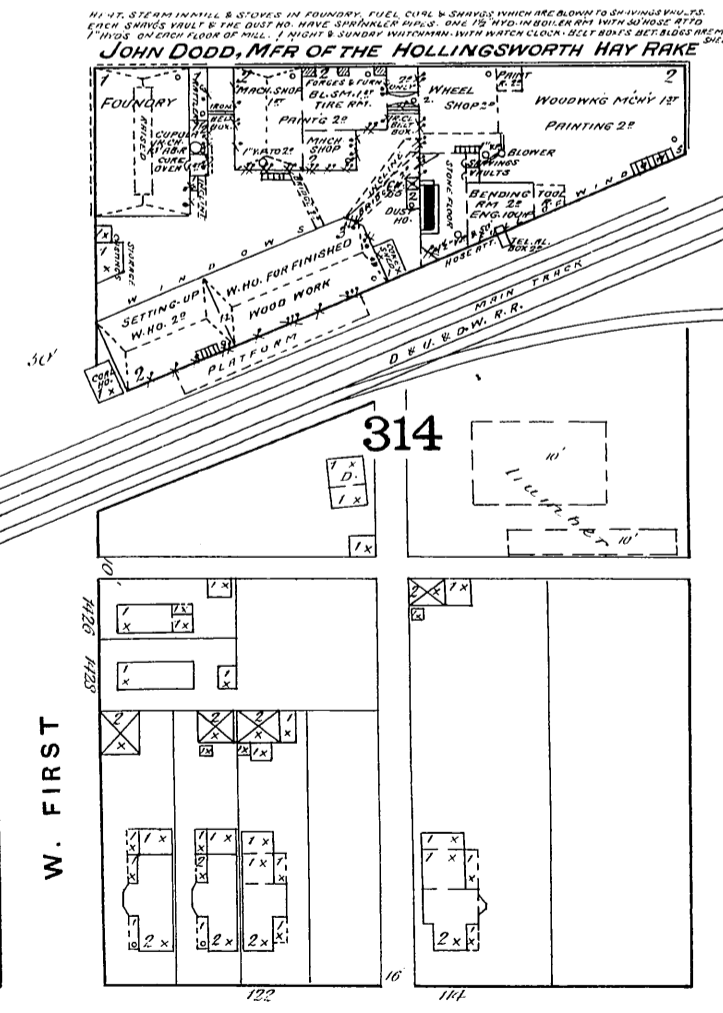
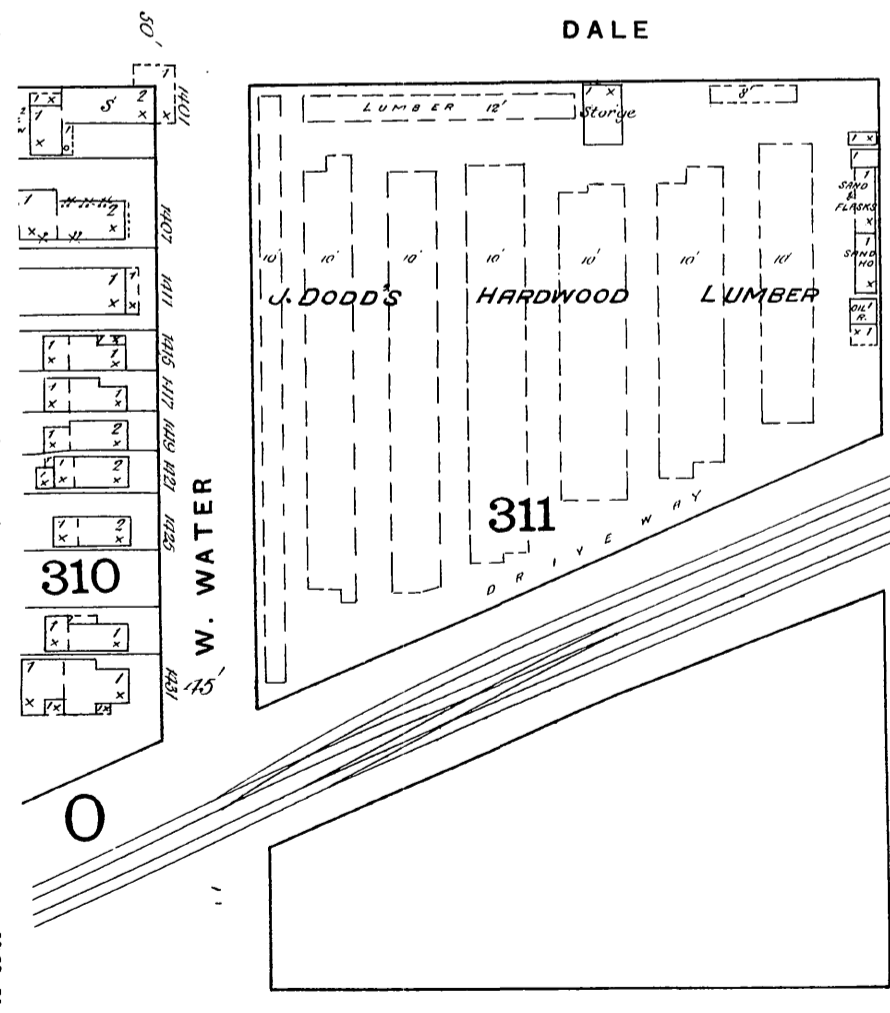
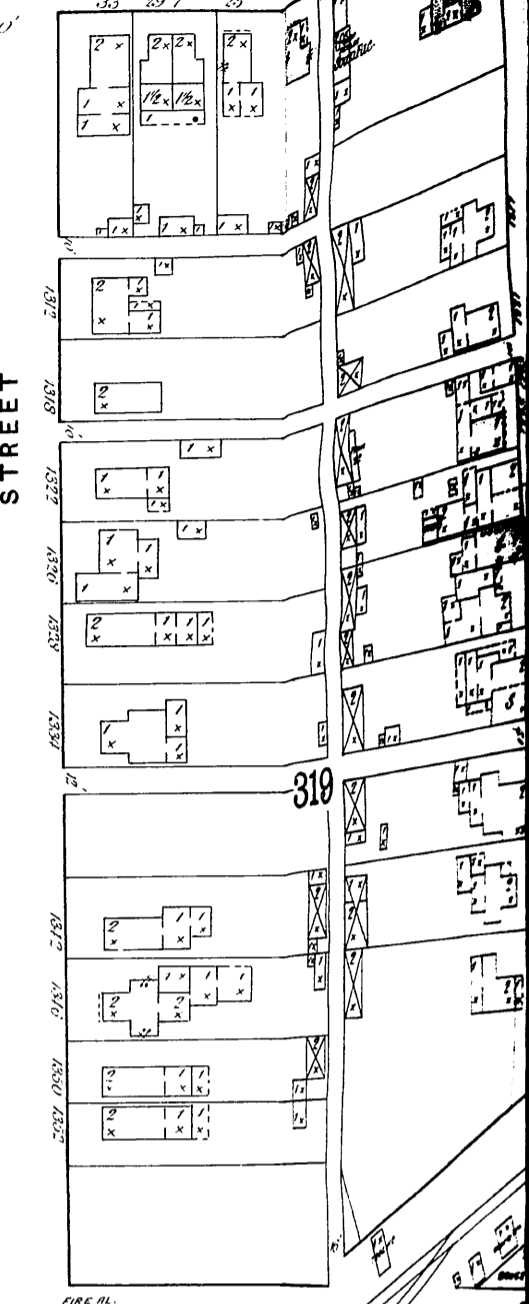
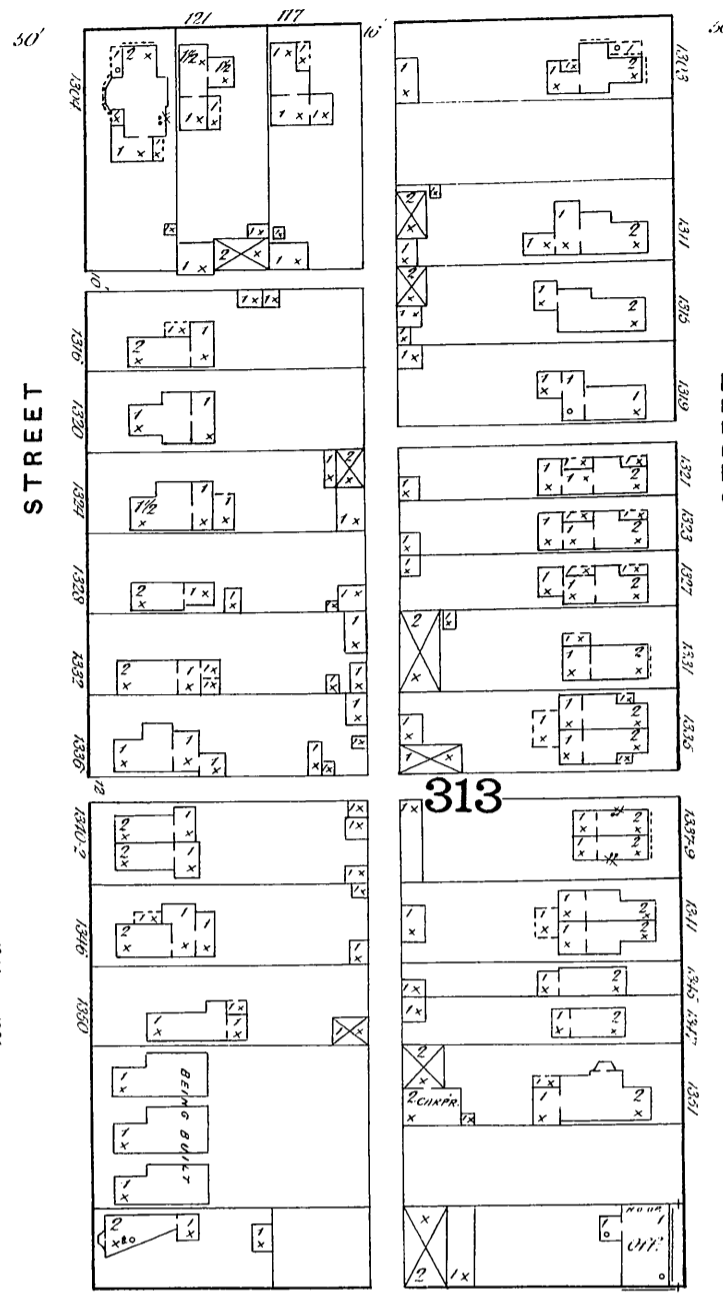
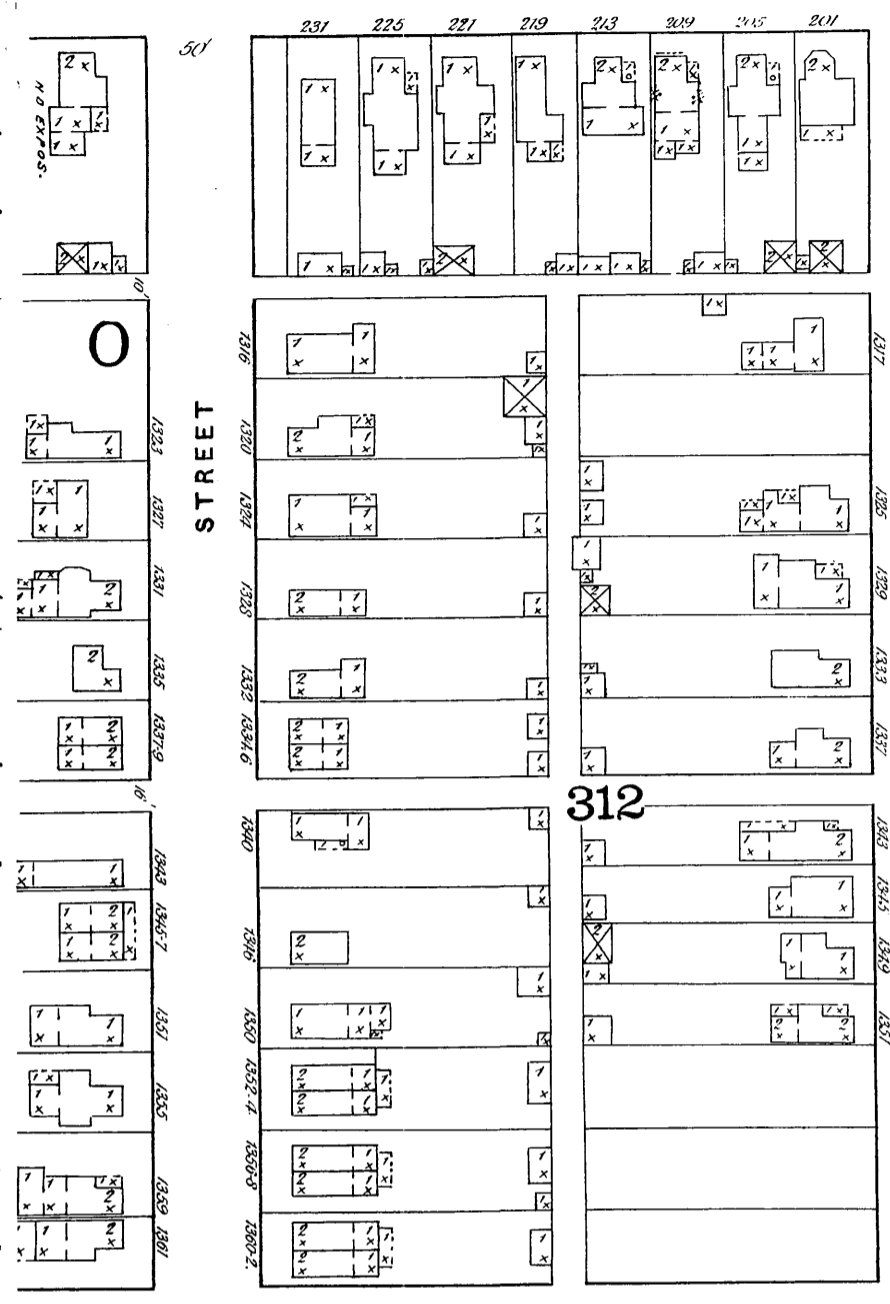


ONE STD. FR. DWGS. OPPOSITE  
ONE & TWO STD. FR. DWGS. OPPOSITE  
1/4" STONE

### N. BROADWAY



14 FT. STEAM IN MILL & STORES IN FOUNDRY. FUEL CURVE & SHOVES WHICH ARE BLOWN TO SHOVING BY V.S. EACH SHOVE VALVE & THE DUST NO. HAVE SPRINKLER PIPES. ONE 12" H.P. IN BOILER RM WITH W.HOSE ATT'D TO 1" INGS. ON EACH FLOOR OF MILL. 1" NIGHT & SUNDAY WHITING. WITH WATER CLOCK. SILENT BELL BOWLS SET BLOWING PIPE OF SHEET IRON.

**JOHN DODD, MFR OF THE HOLLINGSWORTH HAY RAKE**

