

Great Miami River

DAYTON

GAS CO.

IDYLVILD AV.

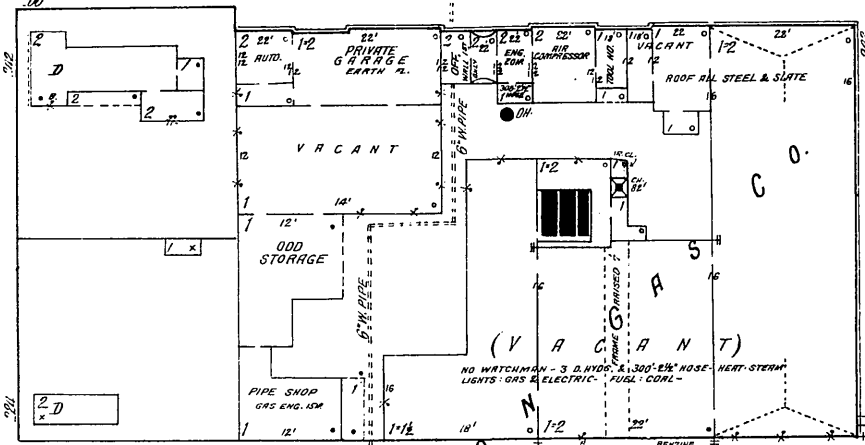
Canal

E. MONUMENT AV.

THE DOMESTIC ENGINEERING CO. WARE HO.

PIONEER WAGON WORKS

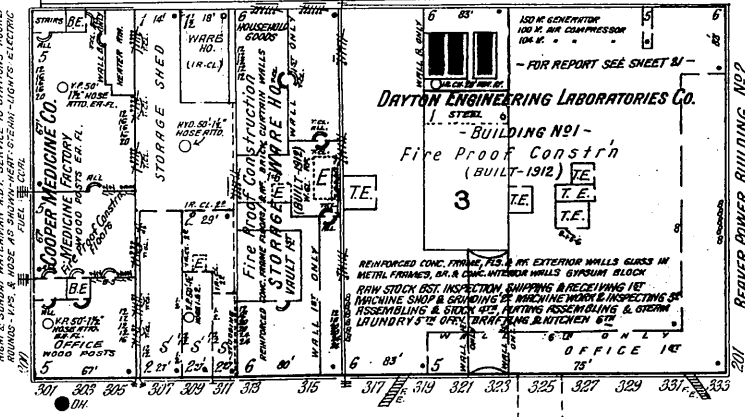
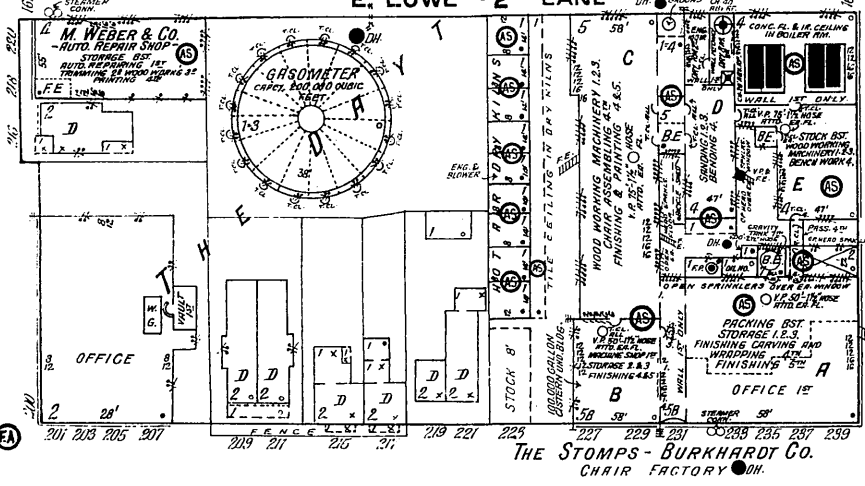
GASOMETER
 CAPCY. 50,000 CUBIC FT.



MURPHY & McMULLEN COAL YARD

COAL BIN

C.C. & ST. L. R. R. FREIGHT HO. NO 3



M. WEBER CO.
 GRINNELL AUTO SPRINKLERS THROUGHOUT - DRY IN WINTER
 WET IN SUMMER - HEADS SPACED 8' 0" - PRIMARY SUPPLY
 1 1/2" WATER 65 LBS. AT STREET GRADE - AUXILIARY
 C. JAMES STEAMER CO. W. INVICIATOR OUTSIDE -

20

THE STOMPS - BURKHARDT CO.
 NIGHT & SUNDAY WATCHMAN - ALL WATCHMANS TIME DETECTOR
 24 STATIONS 4 D. I. STATION HOURLY ROUNDS - GRINNELL AUTO.
 SPRINKLERS THROUGHOUT STABLE & DRY HOSE, DRY SYSTEM ALL OTHER
 WET - HEADS SPACED 8' 0" PRIMARY SUPPLY 15,000 GALS
 GRAVITY TANK, ELEV. 22' 0" HIGHEST LINE OF SPRINKLERS
 SECONDARY, CITY WATER 65 LBS. AT STREET GRADE. MAIN LINES
 FIRE PUMP SIZE 18 X 12. CAPCY 1000 GALLONS PER MIN.
 DRAWING FROM 100,000 GALLON RESERVOIR IN DIST. OF BLDG.
 18" AUXILIARY 6" DIAMETER STEAMER 200' - 200' 2" HOSE
 ATTACHABLE TO 3" OUTSIDE. 0. NS. 1 1/2" - 1 1/2" HOSE ATT. TO W.P.S. AS
 3" HOSE - CHEM. EXTGRS. DISTRIED - BLOWERS ATT. TO WOOD
 WORKING MACHINES - SHAVINGS BLOWN DIRECT TO BOILERS
 HEAT STEAM - POWER LIGHTS - ELECTRIC TRANSMITTED CURRENT
 FUEL - COAL & WASTE -

