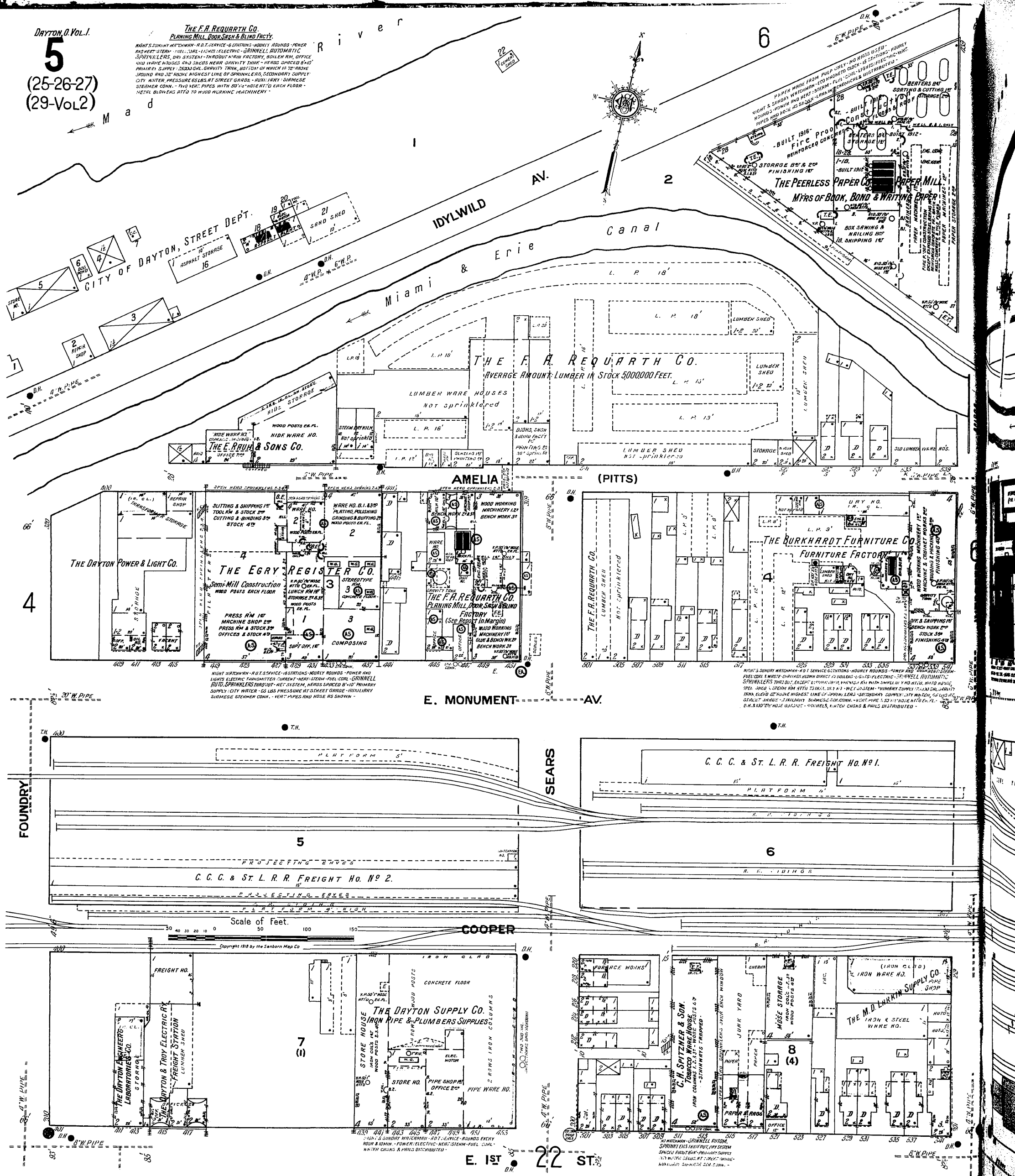


The F.A. Requarth Co.
PLANNING MILL, DOOR, SASH & BLIND FACTY.
NIGHT'S SERVICE WITH DRAWING - R.O.T. SERVICE - 18 STATIONS - HOURLY ROUNDS - POWER AND HEAT STEAM - 180 L. LIGHTS - ELECTRIC - GRINNELL AUTOMATIC SPRINKLERS, DRY SYSTEM - THROUGH MAIN FACTORY, BOILER RM, OFFICE AND WARE HOUSES AND SIZES NEAR GRAVITY TRINK - HEADS SPACED 8' BY PRIMARY SUPPLY - 2500 GAL. GRAVITY TRINK, BOTTOM OF WHICH IS 20' ABOVE GROUND AND 32' ABOVE HIGHEST LINE OF SPRINKLERS, SECONDARY SUPPLY CITY WATER, PRESSURE 65 LBS. AT STREET GRADE - AUXILIARY - SIMMENSE STEAMER CONN. - 1 1/2" VERT. PIPES WITH 50' 1/2" HOSE AT EACH FLOOR - METAL BLOWERS ATT'D TO WOOD PULPING MACHINERY -



E. MONUMENT AV.

COOPER

E. 1ST ST. 22 ST.

Scale of Feet. 0 50 100 150

Copyright 1918 by the Sanborn Map Co.

C. C. C. & St. L. R. R. FREIGHT HO. NO. 1.

C. C. C. & St. L. R. R. FREIGHT HO. NO. 2.

THE DAYTON POWER & LIGHT CO.
IRON PIPE & PLUMBERS SUPPLIES

C. H. SPITZNER & SON
TOBACCO WAREHOUSE

THE M. D. LARKIN SUPPLY CO.
IRON & STEEL WARE HO.

THE EGRY REGISTER CO.

THE BURKHARDT FURNITURE CO.
FURNITURE FACTORY

THE F. A. REQUARTH CO.
PLANNING MILL, DOOR, SASH & BLIND FACTORY

THE F. A. REQUARTH CO.
LUMBER SHED

THE E. RAUH & SONS CO.

THE F. A. REQUARTH CO.
LUMBER SHED

THE DRYTON POWER & LIGHT CO.

THE F. A. REQUARTH CO.
LUMBER SHED

THE EGRY REGISTER CO.

THE F. A. REQUARTH CO.
LUMBER SHED

THE E. RAUH & SONS CO.

THE F. A. REQUARTH CO.
LUMBER SHED

THE DRYTON POWER & LIGHT CO.

THE F. A. REQUARTH CO.
LUMBER SHED

THE EGRY REGISTER CO.

THE F. A. REQUARTH CO.
LUMBER SHED

THE E. RAUH & SONS CO.

THE F. A. REQUARTH CO.
LUMBER SHED

THE DRYTON POWER & LIGHT CO.

THE F. A. REQUARTH CO.
LUMBER SHED

THE EGRY REGISTER CO.

THE F. A. REQUARTH CO.
LUMBER SHED

THE E. RAUH & SONS CO.

THE F. A. REQUARTH CO.
LUMBER SHED

THE DRYTON POWER & LIGHT CO.

THE F. A. REQUARTH CO.
LUMBER SHED

THE EGRY REGISTER CO.

THE F. A. REQUARTH CO.
LUMBER SHED

THE E. RAUH & SONS CO.

THE F. A. REQUARTH CO.
LUMBER SHED

THE DRYTON POWER & LIGHT CO.

THE F. A. REQUARTH CO.
LUMBER SHED

THE EGRY REGISTER CO.

THE F. A. REQUARTH CO.
LUMBER SHED

THE E. RAUH & SONS CO.

THE F. A. REQUARTH CO.
LUMBER SHED

THE DRYTON POWER & LIGHT CO.

THE F. A. REQUARTH CO.
LUMBER SHED

THE EGRY REGISTER CO.

THE F. A. REQUARTH CO.
LUMBER SHED

THE E. RAUH & SONS CO.

THE F. A. REQUARTH CO.
LUMBER SHED

THE DRYTON POWER & LIGHT CO.

THE F. A. REQUARTH CO.
LUMBER SHED

THE EGRY REGISTER CO.

THE F. A. REQUARTH CO.
LUMBER SHED

THE E. RAUH & SONS CO.

THE F. A. REQUARTH CO.
LUMBER SHED

THE DRYTON POWER & LIGHT CO.

THE F. A. REQUARTH CO.
LUMBER SHED

THE EGRY REGISTER CO.

THE F. A. REQUARTH CO.
LUMBER SHED

THE E. RAUH & SONS CO.

THE F. A. REQUARTH CO.
LUMBER SHED

THE DRYTON POWER & LIGHT CO.

THE F. A. REQUARTH CO.
LUMBER SHED

THE EGRY REGISTER CO.

THE F. A. REQUARTH CO.
LUMBER SHED

THE E. RAUH & SONS CO.

THE F. A. REQUARTH CO.
LUMBER SHED

THE DRYTON POWER & LIGHT CO.

THE F. A. REQUARTH CO.
LUMBER SHED

THE EGRY REGISTER CO.

THE F. A. REQUARTH CO.
LUMBER SHED

THE E. RAUH & SONS CO.

THE F. A. REQUARTH CO.
LUMBER SHED

THE DRYTON POWER & LIGHT CO.

THE F. A. REQUARTH CO.
LUMBER SHED

THE EGRY REGISTER CO.

THE F. A. REQUARTH CO.
LUMBER SHED

THE E. RAUH & SONS CO.

THE F. A. REQUARTH CO.
LUMBER SHED

THE DRYTON POWER & LIGHT CO.

THE F. A. REQUARTH CO.
LUMBER SHED

THE EGRY REGISTER CO.

THE F. A. REQUARTH CO.
LUMBER SHED

THE E. RAUH & SONS CO.

THE F. A. REQUARTH CO.
LUMBER SHED

THE DRYTON POWER & LIGHT CO.

THE F. A. REQUARTH CO.
LUMBER SHED

THE EGRY REGISTER CO.

THE F. A. REQUARTH CO.
LUMBER SHED

THE E. RAUH & SONS CO.

THE F. A. REQUARTH CO.
LUMBER SHED