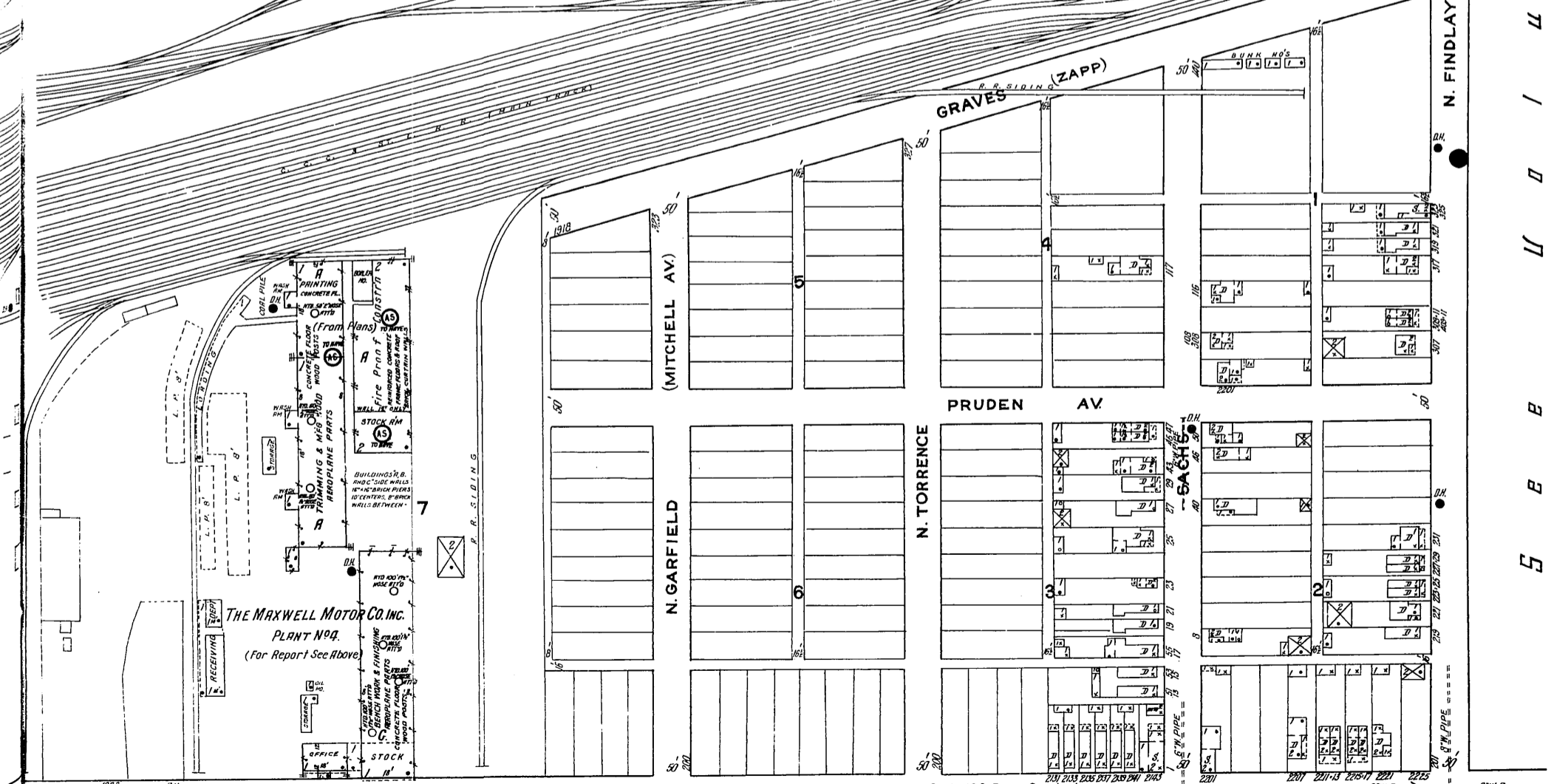
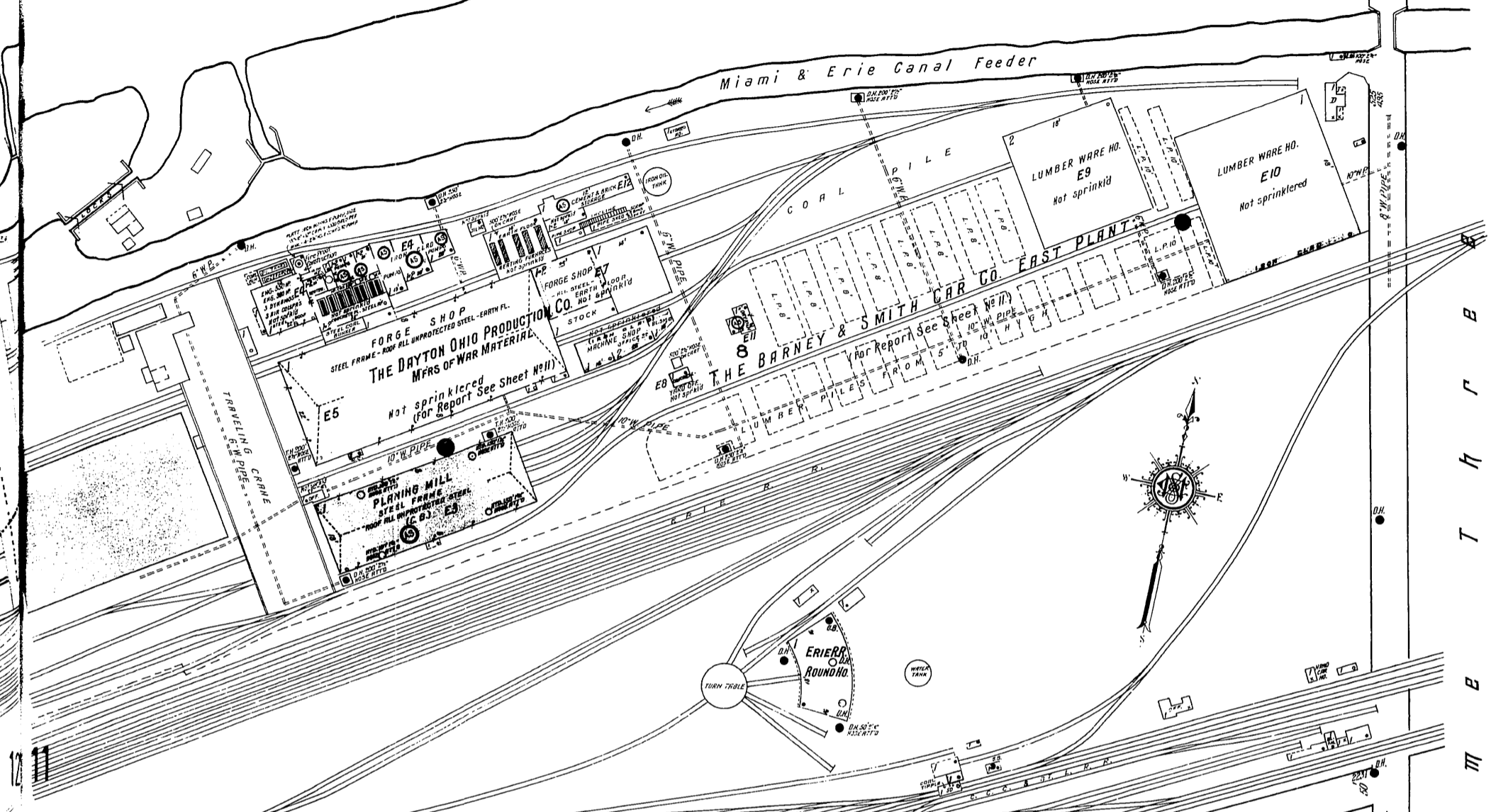


THE MAXWELL MOTOR CO. INC. PLANT NO. 4
FOUR NIGHT WATCHMEN - THREE REPORT TO A. B. T.
STATIONS - ROUNDS EVERY 20 MINUTES - HEAT - STEAM -
LIGHTS - ELECTRIC - FUEL - COAL - TWO OUTSIDE DOUBLE
HYDRANTS AND 7 INSIDE HYDRANTS WITH 550' 1 1/2" 82"
HOSE AS SHOWN - WATER CRACKS AND PIPES - PYRENE
EXTINGUISHERS DISTRIBUTED

M a d R i v e r

SCALE 100 FT. TO AN INCH



THE MAXWELL MOTOR CO. INC.
PLANT NO. 4
(For Report See Above)

E. 1ST ST. Scale 100 Ft. to One Inch. Copyright 1918 by the Sanborn Map Co.

28

29

30

S
E
B
B
U
O
I
U
M
B
E
T
H
B