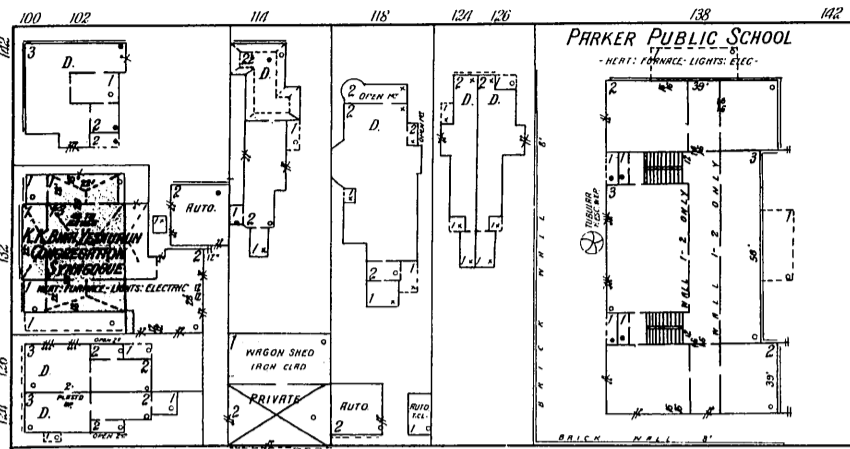


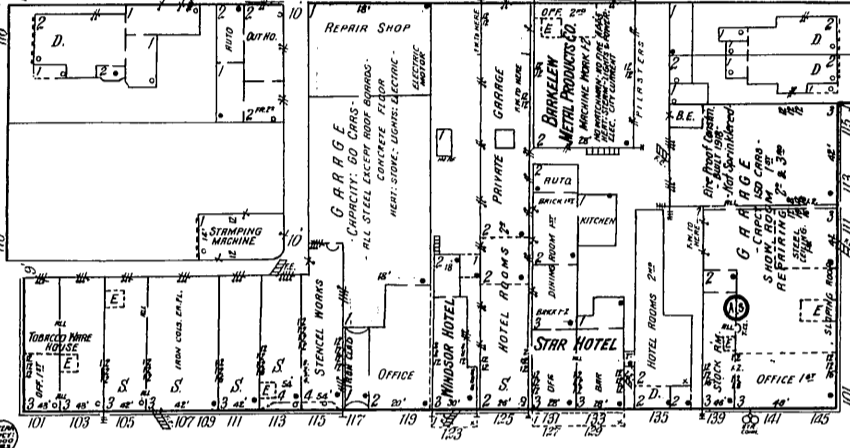


3

E. 1ST ST.



E. BOOHER 5 LANE



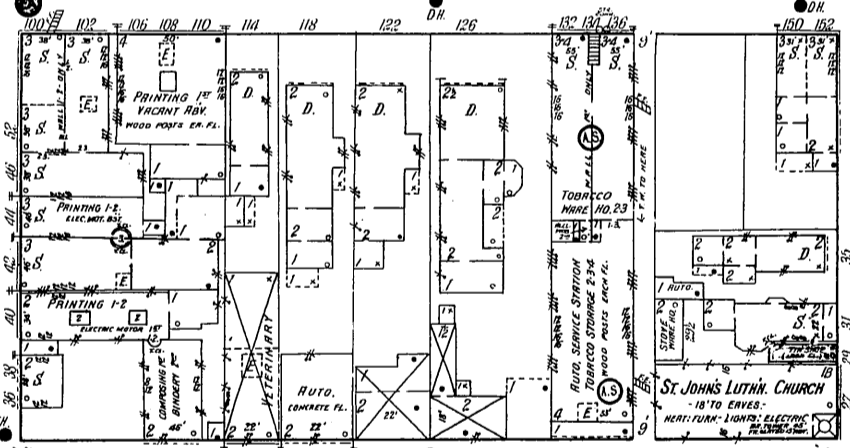
The Dayton & Troy Auto. Co.

NO WATCHMAN - EVANS' B' WET SYSTEM, AUTO SPRINKLERS THROUGH, 139 TO 145, E. SECOND ST. & 101 TO 111, N. ST. CLAIR ST. HEADS SPACED ABOUT 8' X 10' - PRIMARY SUPPLY: CITY WATER, 65 LBS. BY STREET GRADE - AUXILIARY SHIMMEE STR. CONN. ANNUNCIATOR OUTSIDE OF BUILDING - 113-115 N. ST. CLAIR ST. FIRE PROOF CONSTRUCTION, REINFORCED CONCRETE FRAME, ROOF & FLOORS - BRICK EXTERIOR WALLS - BUILT 1918 - POWER & LIGHTS - ELECTRIC - HEAT - STEAM.

18

E. 2ND ST.

20



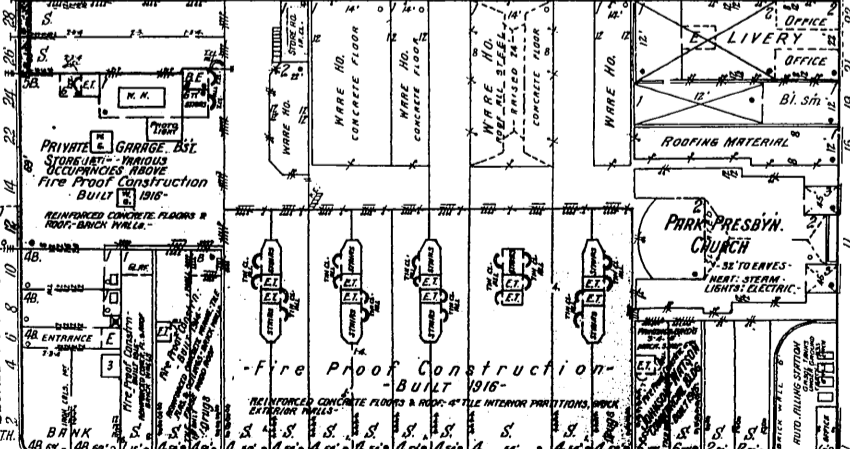
134-136 E. SECOND ST.

EVANS' B' DRY SYSTEM AUTOMATIC SPRINKLERS THROUGH, HEADS SPACED 8' X 10' - PRIMARY SUPPLY: CITY WATER, 65 LBS. AT STREET GRADE - AUXILIARY SHIMMEE STR. CONN. ANNUNCIATOR OUTSIDE OF BUILDING.

N. JEFFERSON

N. ST. CLAIR

E. ARTZ 2 LANE

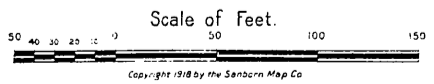


E. 3RD ST.

36

JOHNSON-WATSON

COMMERCIAL BLDG.
- FIRE PROOF CONSTRUCTION - BUILT 1915 -
REINFORCED CONCRETE FRAME, FLOORS & ROOF - TILE WALLS.



Copyright 1918 by the Sanborn Map Co.