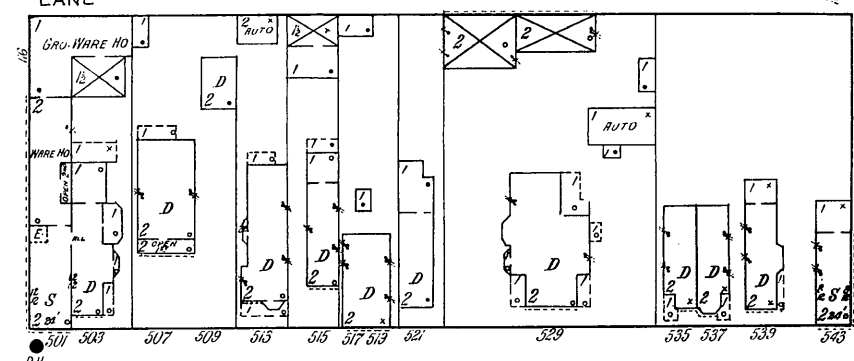
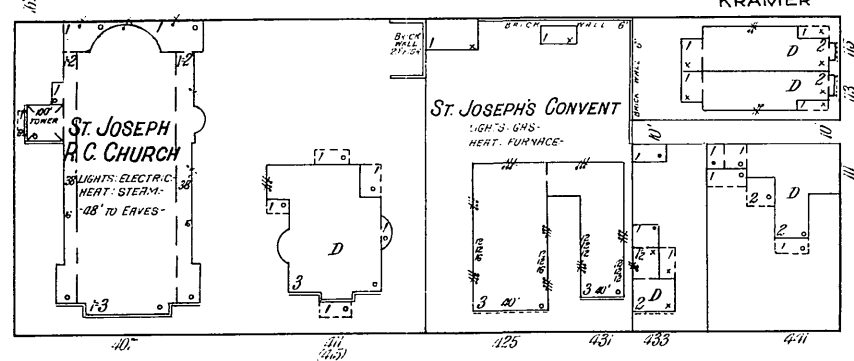
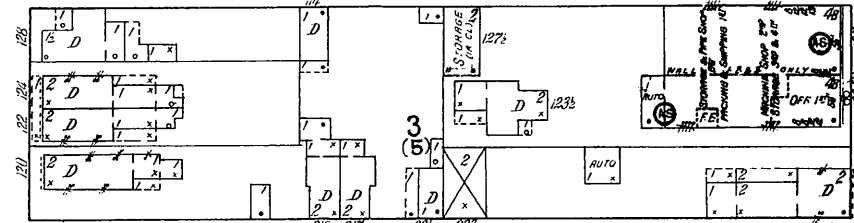
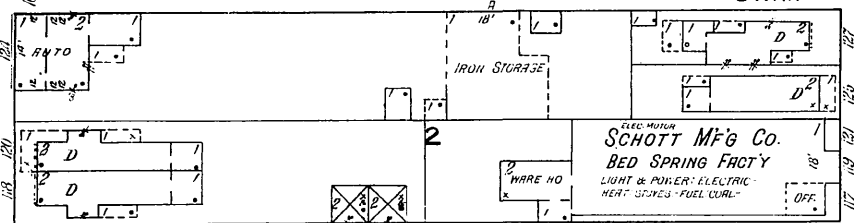
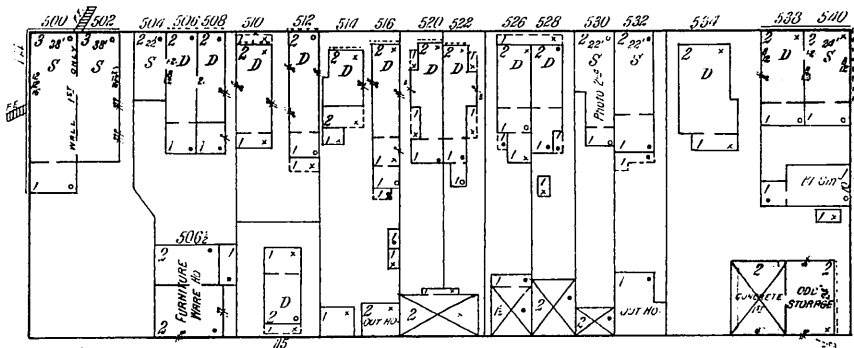
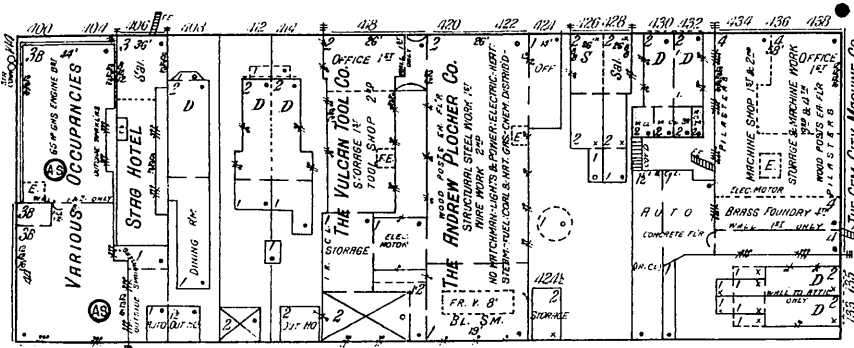
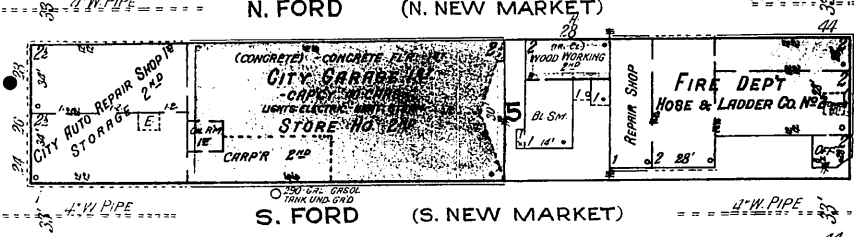
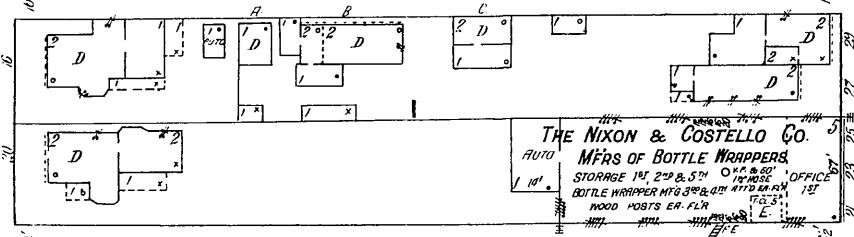
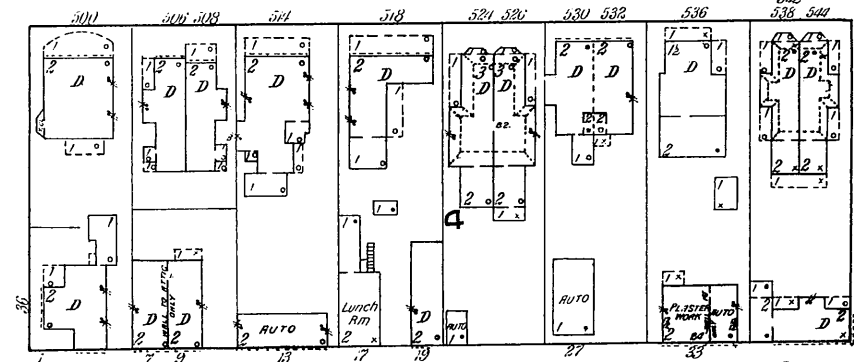
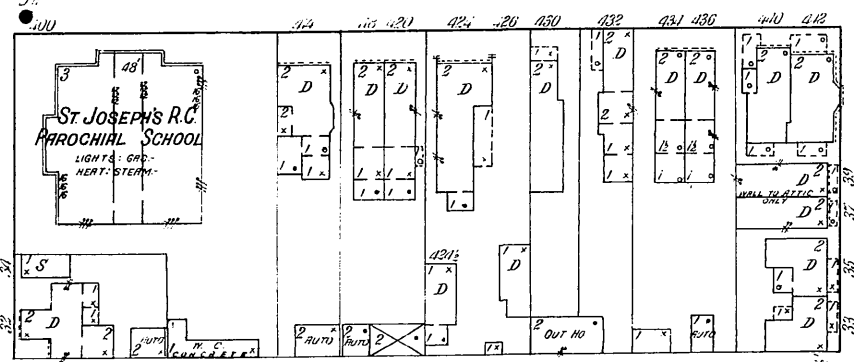


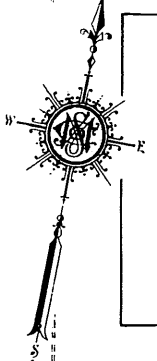
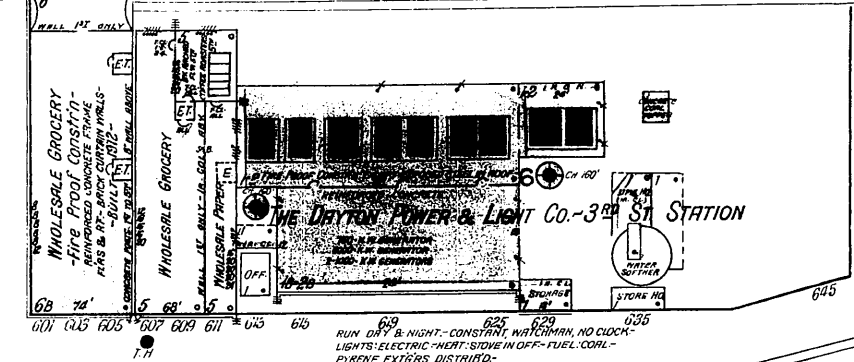
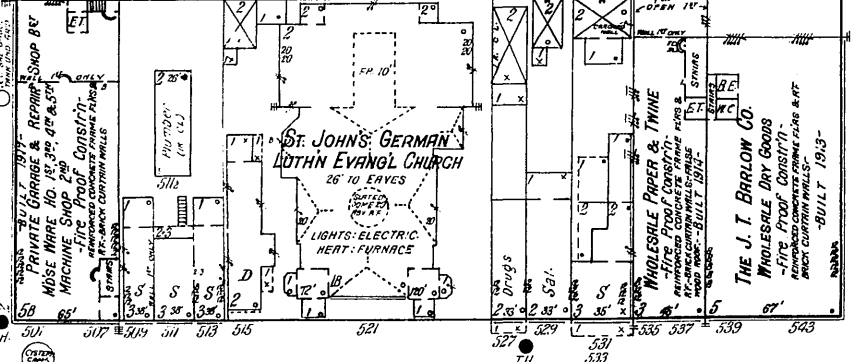
E. 1ST ST.



E. 2ND ST.



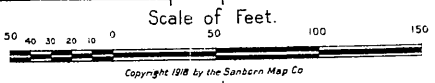
E. 3RD ST.



MADISON

SEARS

WEBSTER



FIRE DEPT
 18-MEN-AMERICAN LA FRANCE MOTOR DRIVEN COMB. PUMPER, HOSE & CHEMICAL, 4000 GALS. PER MIN. PUMP & 33-ONE CHEMICAL-AMERICAN LA FRANCE 75' SERIAL TRUCK, MOTOR DRIVEN-1st CLASS AMERICAN LA FRANCE STEINER WELD IN RESERVE-2200-2 1/2" C.R.L. HOSE-