

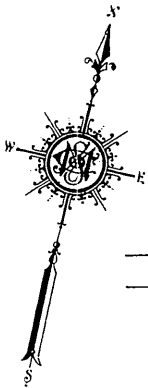
The Maxwell Motor Co. Inc.
PLANT No. 1

7 DAY AND 6 NIGHT WATCHMEN. NO CLOCK AND 6 NIGHT WATCHMEN REPORTING EVERY 15 MINUTES TO 31 4 D T STATIONS - POWER AND LIGHTS - ELECTRIC - HEAT - STEAM - CRANWELL AUTOMATIC SPRINKLERS THROUGHOUT, EXCEPT FRAME SHEDS, ASSUMING 8 LOGS X 100 - 124 MCDONOUGH ST. WET SYSTEM, EXCEPT IN SHEDS AND NO. 16 1/2 DUNDON ST. HEADS SPACED 6' X 10' PRIMARY SUPPLY - 5000 GALLON WOOD SPRAY TANK, ELEVATED 22' ABOVE HIGHEST LINE OF SPRINKLER HEADS - SECONDARY SUPPLY - TWO 6" CONNECTIONS TO CITY MAINS, 65 LBS. PRESSURE - TWO SIEMSE STEAMER CONNECTIONS - 400' 2" HOSE DISTRIBUTED AS SHOWN UNDER WRITERS CHEMICAL EXTINGUISHERS DISTRIBUTED - WATER BARRELS AND PAILS DISTRIBUTED - BLOWERS TO WOOD WORKING MACHINES - SPARK HOODS ON IRON CHIMNEYS - ELECTRIC FIRE ALARM, 8 BUCKS CONNECTED TO DAYTON FIRE DEPT. STATION No. 2.

39

S. N. BROWN & Co.
107-111 S. COMMERCIAL ST.

NO WATCHMAN - POWER AND HEAT - STEAM - LIGHTS - ELECTRIC - FUEL - COAL AND WASTE - ROCKWOOD AUTOMATIC SPRINKLERS THROUGHOUT, DRY SYSTEM, HEADS SPACED 8' X 8' - 6" CONNECTION TO CITY MAINS - 65 LBS. PRESSURE - ONE SIEMSE STEAMER CONNECTION - ONE 2" VERT. PIPE & HOSE AS SHOWN - CENTRAL STATION SPRINKLER SUPERVISOR -



BAINBRIDGE

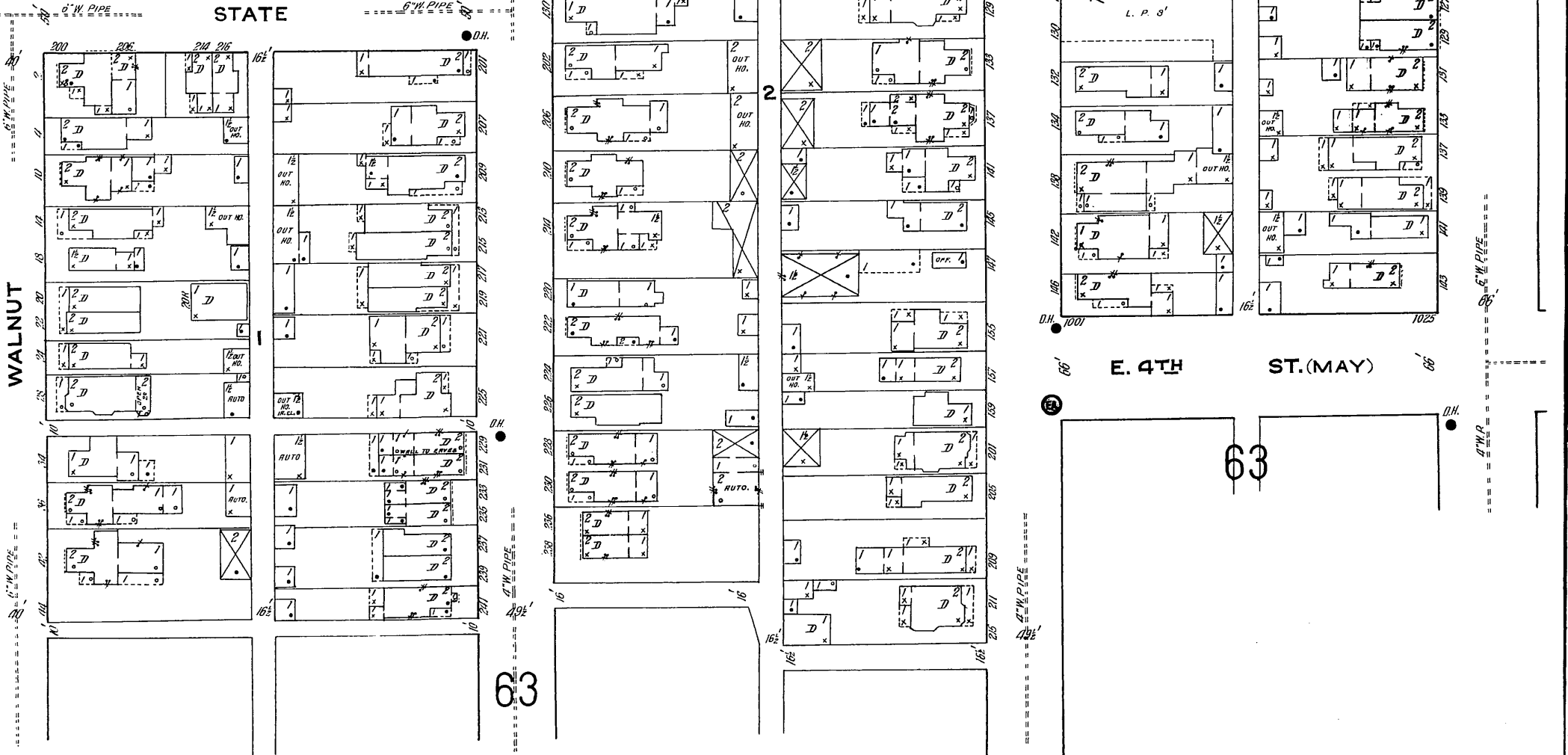
BACON

MCDONOUGH

S. COMMERCIAL

41

STATE



Scale of Feet.

