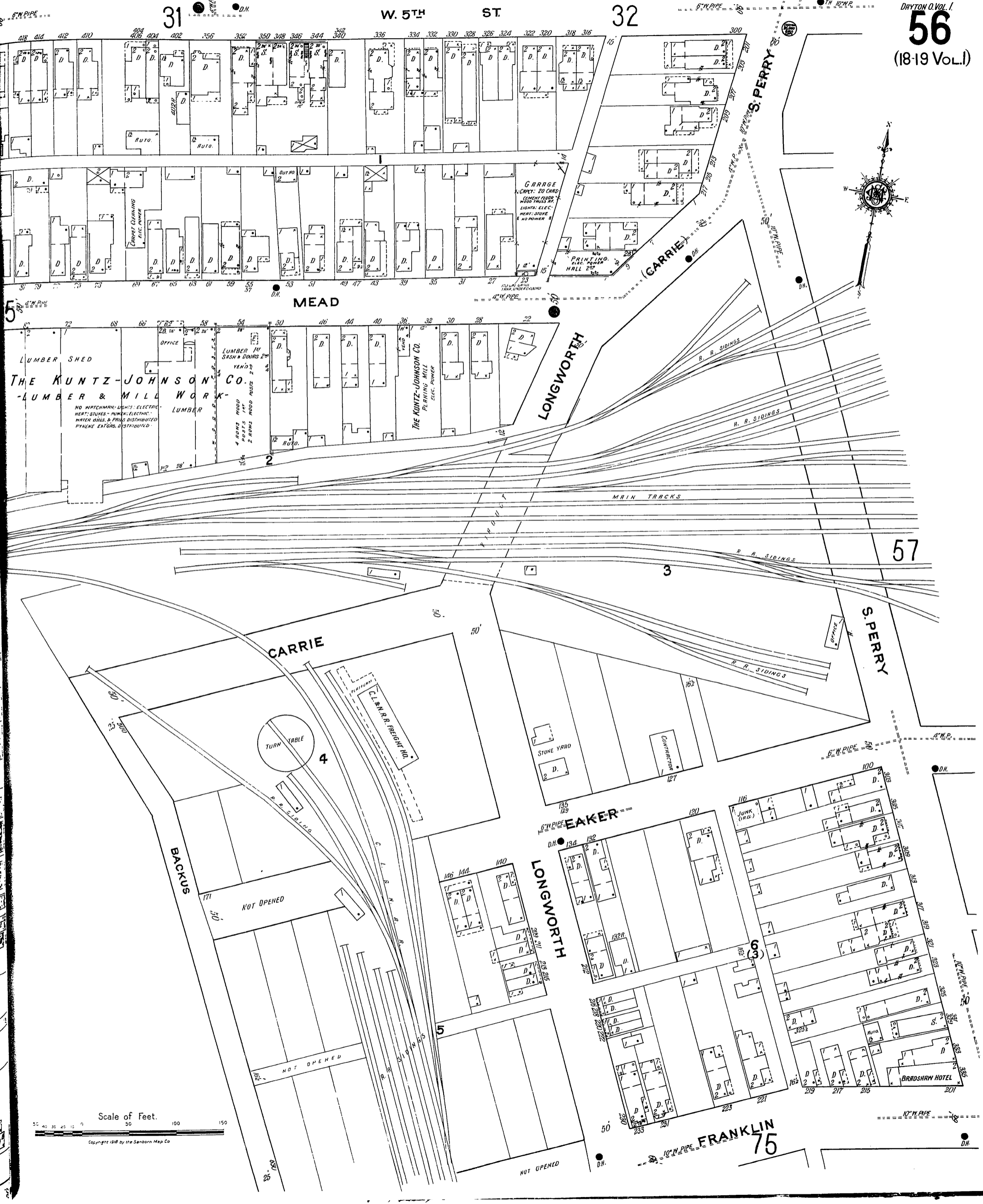


W. 5TH ST

32

31



THE KUNTZ-JOHNSON CO.
LUMBER & MILL WORK
LUMBER SHED
OFFICE
LUMBER 1st SASH & DOORS 2nd FLOOR
LUMBER
NO WITCHMAN LIGHTS ELECTRIC HEAT STOVES - PUMPS ELECTRIC WATER SINKS & PIPES DISTRIBUTED PYRENE EXTINGUISHERS DISTRIBUTED
4 ROOMS MOD. BATHS 1st 2 ROOMS MOD. BATHS 2nd

THE KUNTZ-JOHNSON CO.
PLANING MILL
ELEC. POWER

GARAGE
CAPACITY: 20 CARS
CEMENT FLOOR
WOOD TRUSS ROOF
LIGHTS: ELEC.
HEAT: STOVE
& NO POWER

PRINTING
ELEC. POWER
HALL 2nd

CARRIE

BEAKER

LONGWORTH

S. PERRY

FRANKLIN
75

57

Scale of Feet.
0 50 100 150
Copyright 1918 by the Sanborn Map Co