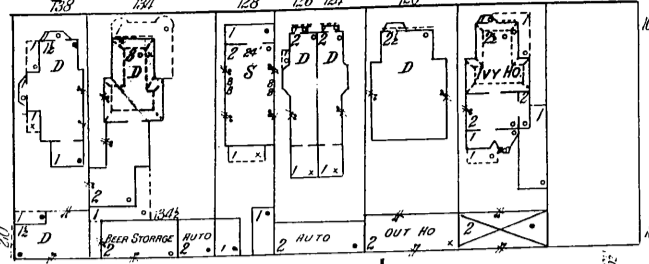


57 (17-18-Vol 1)

W. 5TH ST. 33

UNITED BRETHREN PUBLISHING CO.

HOLDEN HOTEL  
LIGHTS: ELECTRIC - HEAT: STEAM



THE JOHN A. MURPHY COAL YARD

COURT

WAITING R'M  
OFFICES

EAKER

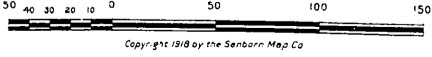
JACOBS LANE 4

EMANUEL R.C. CHURCH

EMANUEL PAROCHIAL SCHOOL

FRANKLIN

Scale of Feet.



Copyright 1918 by the Sanborn Map Co.

**THE GEM SHIRT CO.**  
NO WATCHMAN - LIGHTS & POWER ELECTRIC  
HEAT: STEAM - FUEL: COAL - ESTY AUTOMATIC  
SPRINKLERS THROUGHOUT - MET SYSTEM  
RIPPS: 300 GAL. 15' 10" PRIMARY TANK  
CITY WATER 65 LBS. PRESSURE AT STREET  
GRADE - AUXILIARY 50 LBS. 5 1/2" DIA.

**FIRE DEPT**  
12 MEN - FIREMEN 2 1/2" DRIVEN 3 1/2" CLASS  
STEAMER CAPAC 1200 GAL. 15' 10" DIA.  
1 1/2" FRICTION - 1 1/2" CONSUMPTION - 1 1/2" DIA.  
CHEMICAL ENGINE & HOSE CART MOTOR DRIVEN,  
CAPAC 1000 GAL. PER MIN. 60" OIL CHEMICAL TANK  
200' 2 1/2" HOSE - 1 1/2" TENSION AUTO. REEL 1 1/2" HOSE  
100' 2 1/2" C.R.I. HOSE, 200' 1" RUBBER HOSE.

**UNITED BRETHREN PUBLISHING CO.**  
NIGHT & SUNDAY WATCHMAN, A.D.T. SERVICE, 10 CATIONS.  
WEEKLY ROUNDS - LIGHTS & POWER ELECTRIC 1 1/2" HEAT: STEAM  
FUEL: COAL - ESTY AUTOMATIC SPRINKLERS THROUGHOUT  
MET SYSTEM - HEADS 3" DIA. 1 1/2" PRIMARY SUPPLY  
60000 GAL. GRAVITY TANK ELEV. 22' ABOVE HIGHEST LINE  
OF SPRINKLER HEADS - SECONDARY SUPPLY CITY WATER  
65 LBS. PRESSURE AT STREET GRADE - AUXILIARY 50 LBS.  
5 1/2" DIA. ANNUNCIATOR IN BOKER RM.