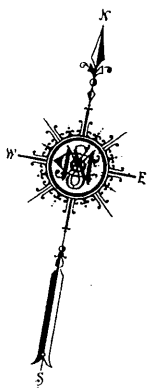
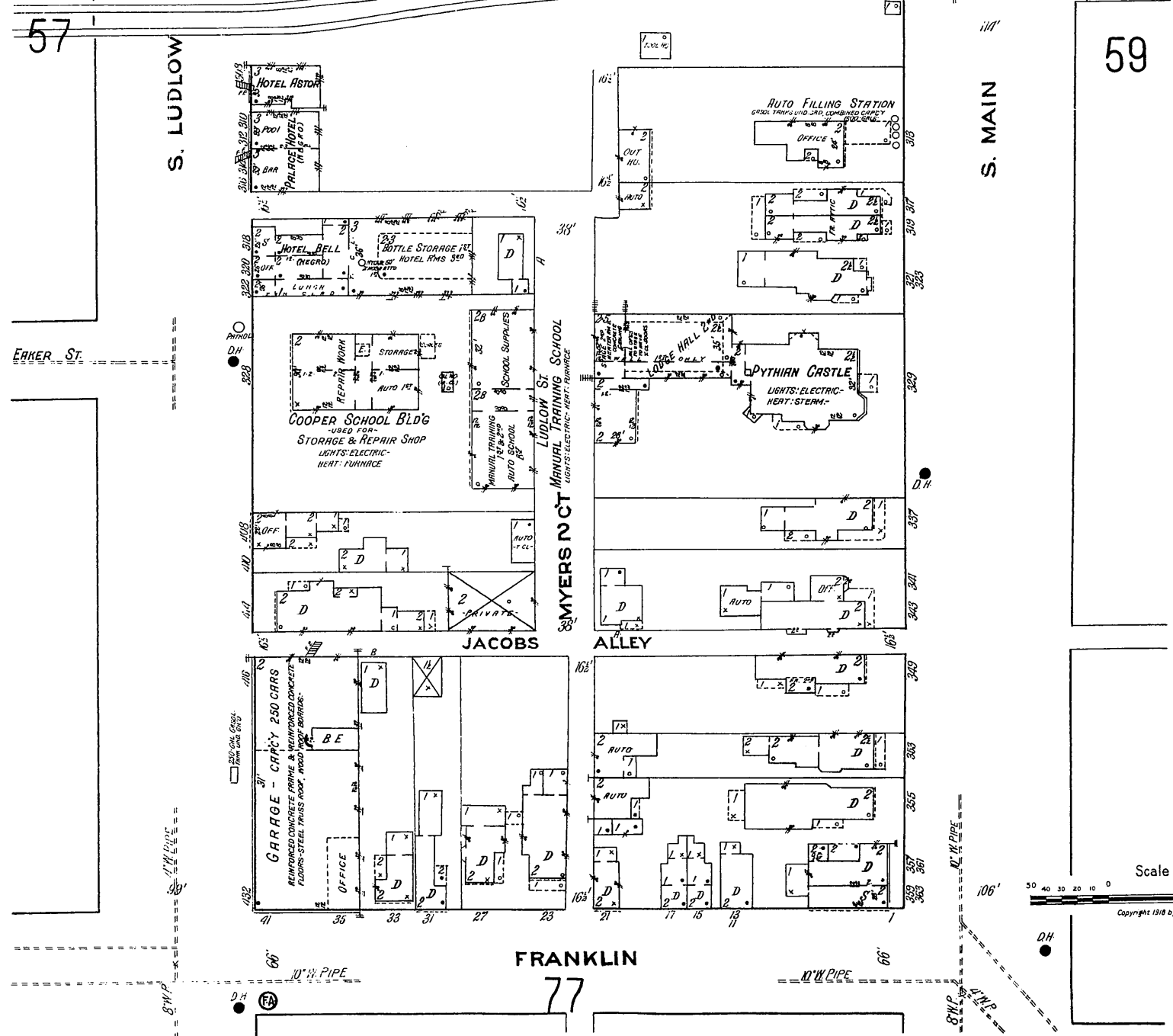
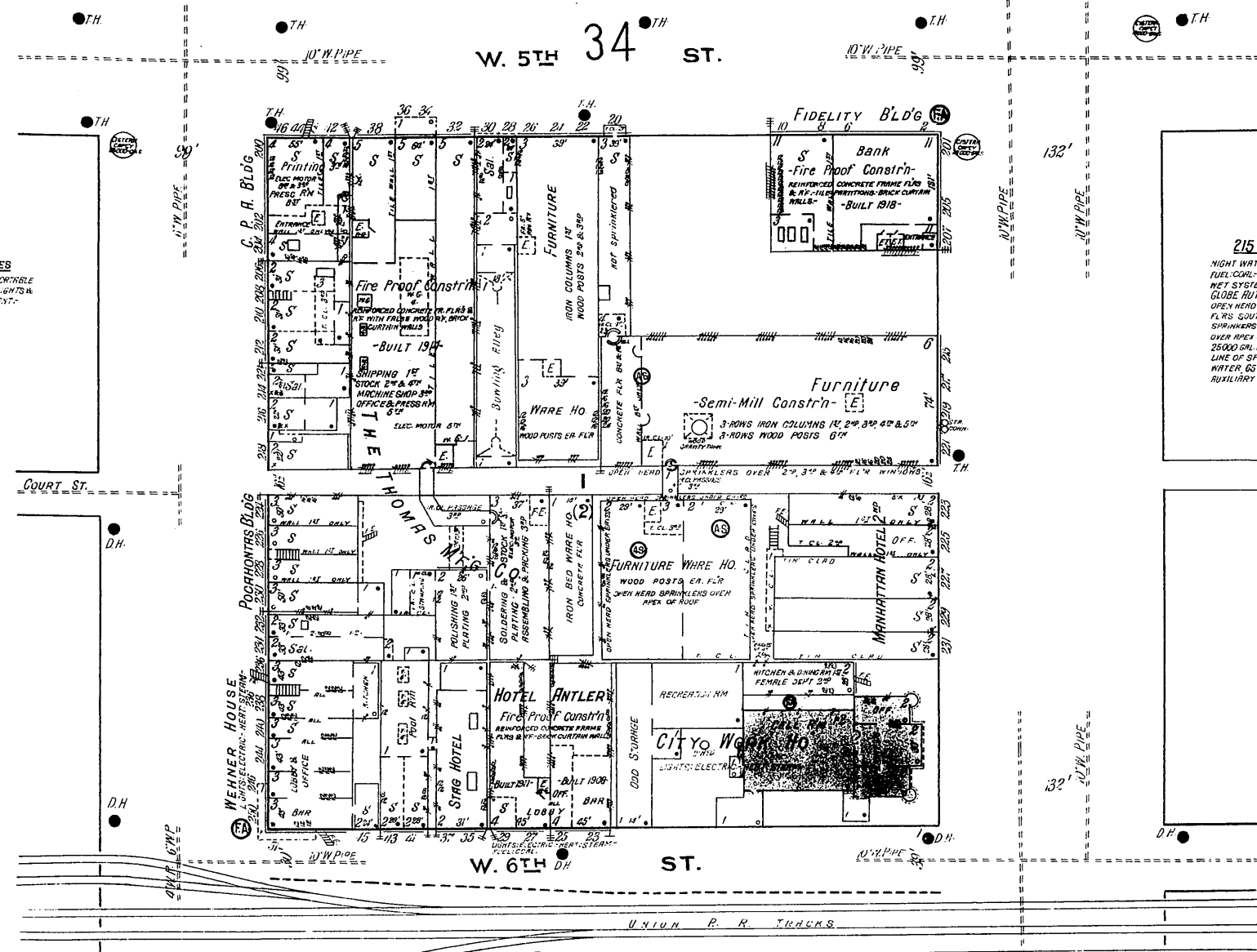


The Thomas Mfg. Co.
MFRS OF METAL SPECIALTIES
NIGHT & SECURITY WATCHMAN, BURKE PORTABLE
CUTS, SECTIONS, MOUNTING ROUNDS, LIGHTS &
FLOWER, ELECTRIC TRANSMITTED CURRENT,
EST. 1878

215 TO 221 S. MAIN ST.
NIGHT WATCHMAN - LIGHTS ELECTRIC HEAT - STEAM
FUEL - COAL - GRINNELL AUTOMATIC SPRINKLERS -
WET SYSTEM IN WARE HO'S & ACROSS ALLEY -
GLOBE AUTOMATIC SPRINKLERS WET SYSTEM
OPEN HEAD RAINWATER SPRINKLERS OVER 1st, 2nd, 3rd & 4th
FLRS SOUTH SIDE OF MAIN BLDG, OPEN HEAD
SPRINKLERS UNDER EAVES NORTH, EAST & WEST SIDE IN
OVER ROPS OF ROOF OF WARE HO'S - PRIMARY SUPPLY
25000 GAL. GRAVITY TANK, ELEV. 22' ABV. HIGHEST
LINE OF SPRINKLERS - SECONDARY SUPPLY CITY
WATER 65 LBS. PRESSURE AT STREET GRADE -
AUXILIARY SIAMESE 3/4" CONN.



Scale of Feet.
0 10 20 30 40 50 60 70 80 90 100 110 120
Copyright 1918 by the Sanborn Map Co