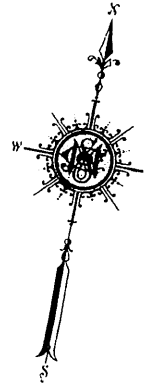
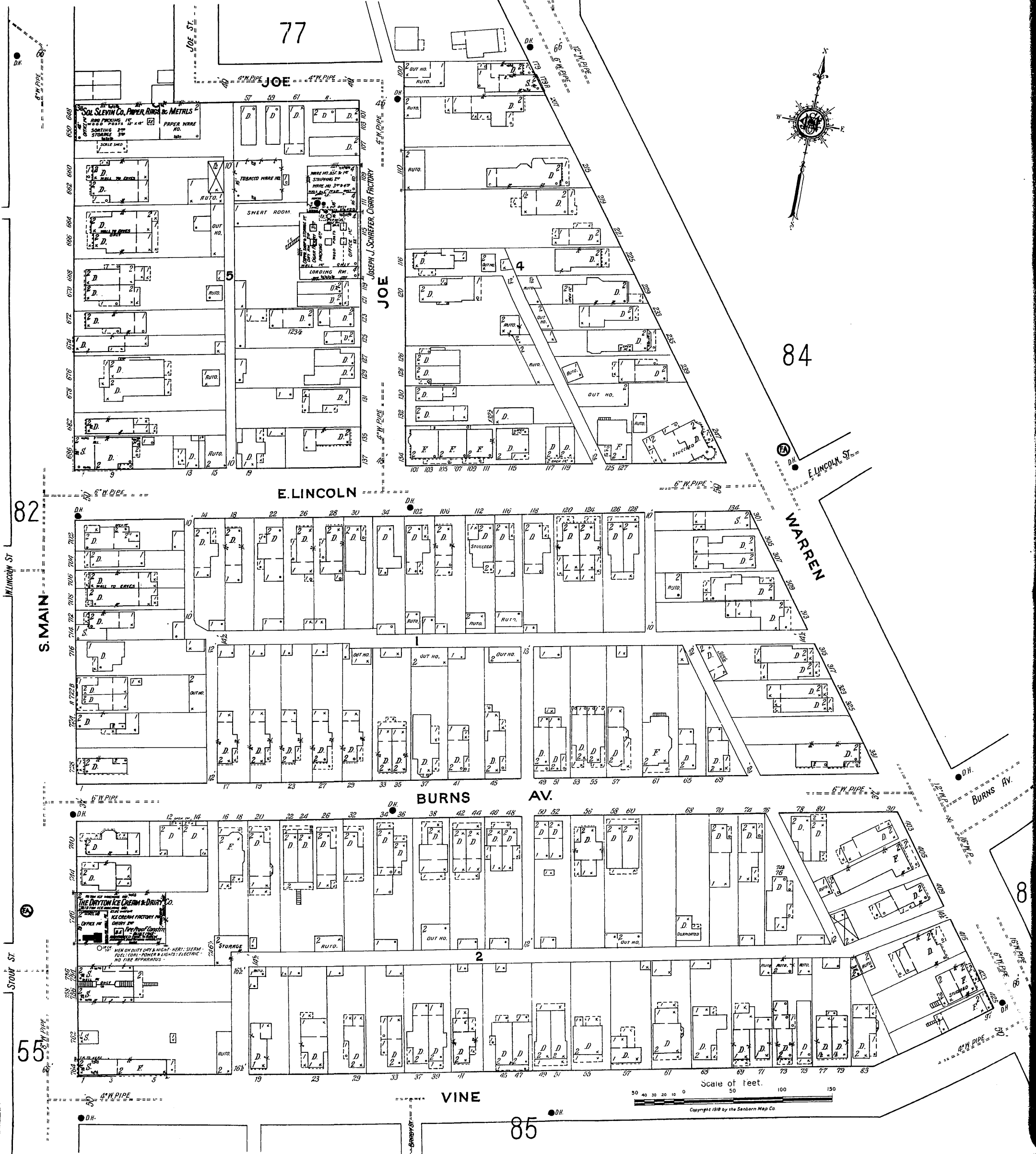


SOL SLEVIN CO. PAPER, RAGS & METALS.
NIGHT WATCHMAN, R.T. SYSTEM, 4 STATIONS, HOURLY
ROUNDS: HEAT: GAS STOVES: LIGHTS: GAS & ELECTRIC
CHEMICAL EXTINGUISHERS DISTRIBUTED.

JOSEPH J. SCHREFFER, CIGAR FACTORY
NIGHT WATCHMAN: HEAT: STEAM & GAS STOVES: PUMPS &
LIGHTS: ELECTRIC: BARRIERS OF WATER & PIPES: CHEM.
EXTINGUISHERS: STAIRWAYS TRAPPED.



Scale of feet. 50 100 150
Copyright 1918 by the Sanborn Map Co.