

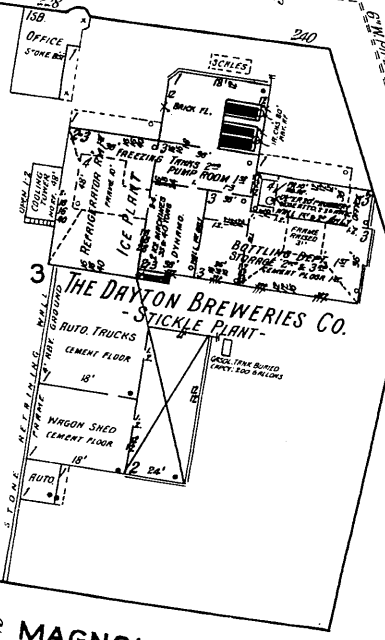
**THE DAYTON BREWERIES CO.**

**- STICKLE PLANT -**

ICE PLANT & BOTTLING WORKS -  
ONE NIGHT & SUNDAY WATCHMAN, R.F. SYSTEMS  
STATIONS, HOURS ROUNDS - LIGHTS, ELECTRIC HEAT  
& PUMPS, STEAM - FUEL COILS, CITY WATER, 12" & 14"  
60" RUBBER HOSE DISTRIBUTED AS SHOWN AND  
VARIOUS LENGTHS OF RUBBER HOSE IN BOTTLING DEPT  
FOR DOMESTIC USE.

85

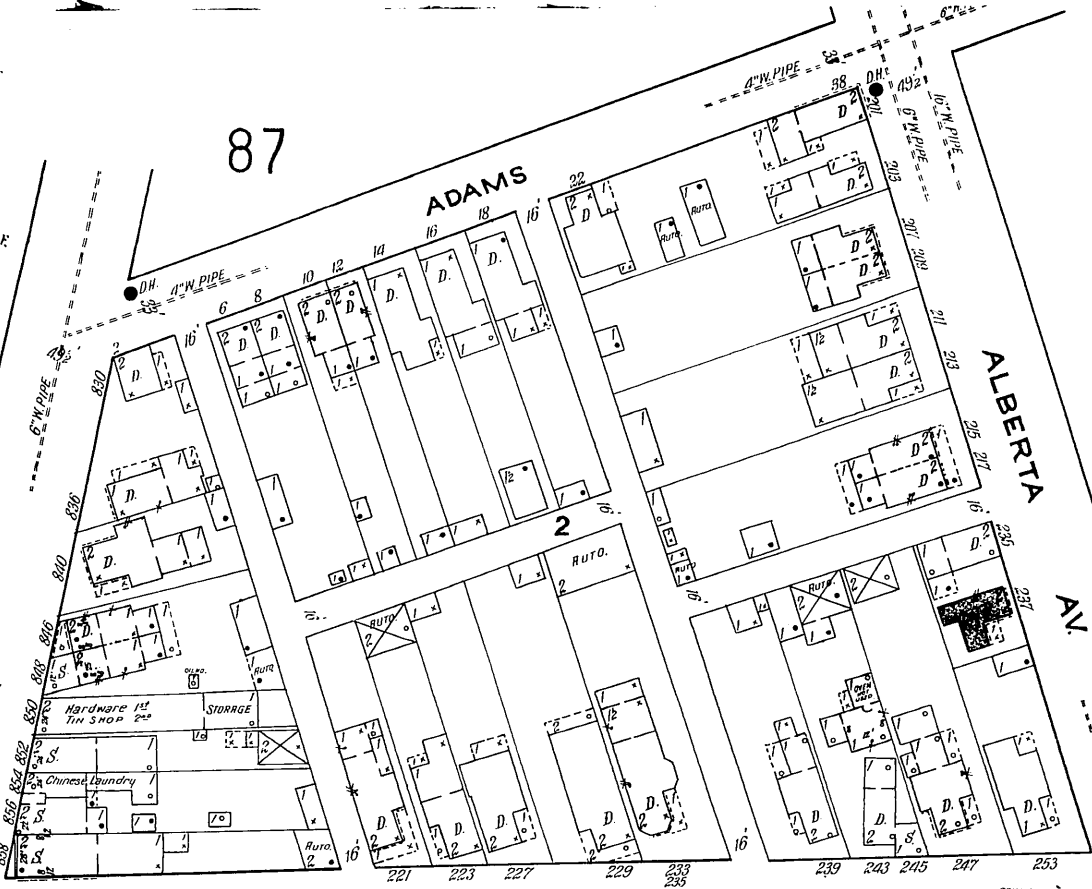
E. APPLE



**THE DAYTON BREWERIES CO.**  
**- STICKLE PLANT -**

87

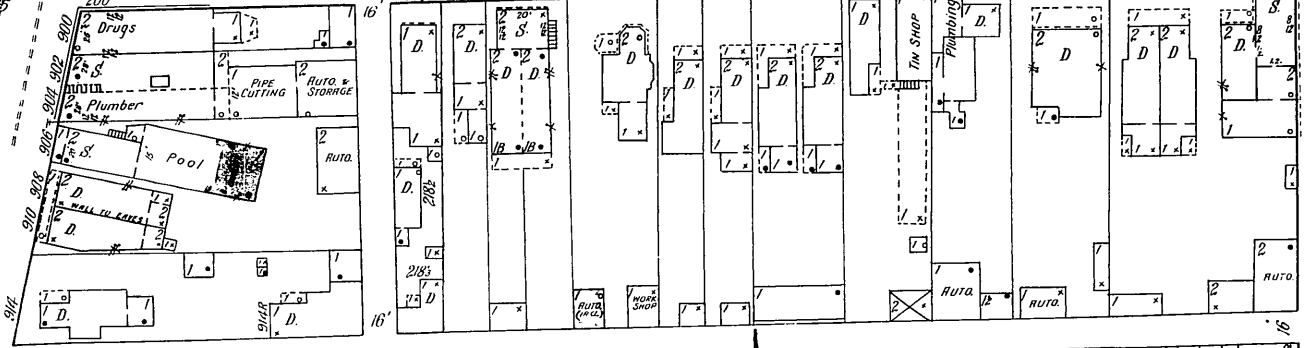
ADAMS



87

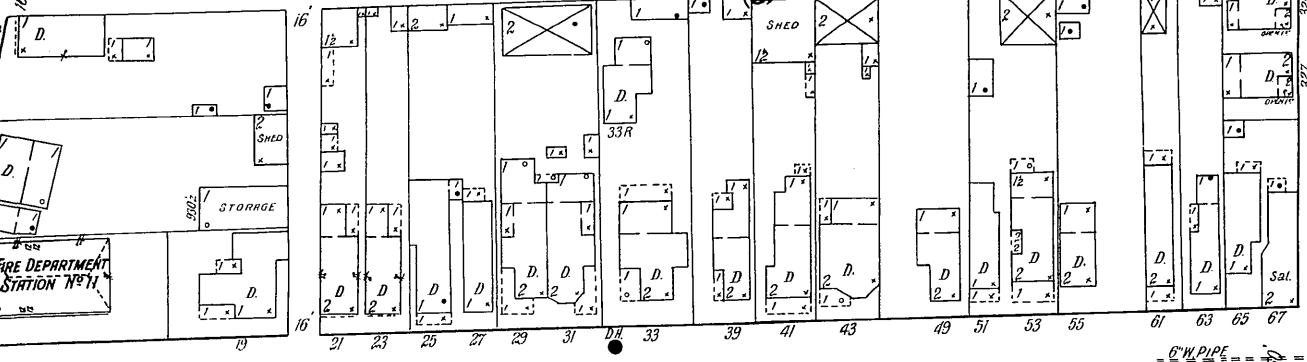
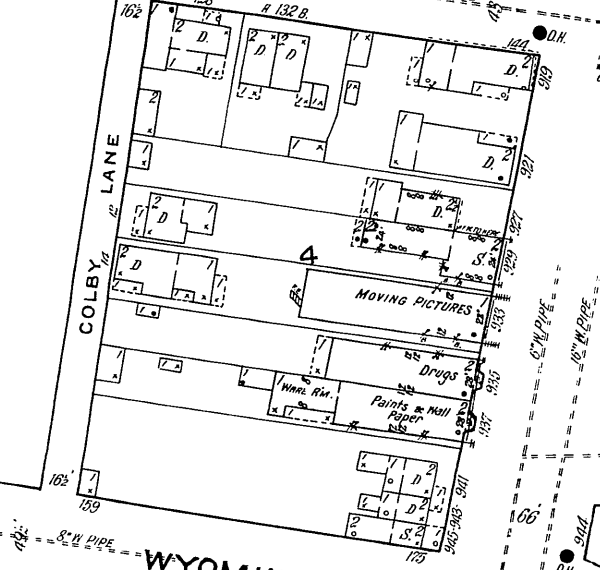
ALBERTA

OAK



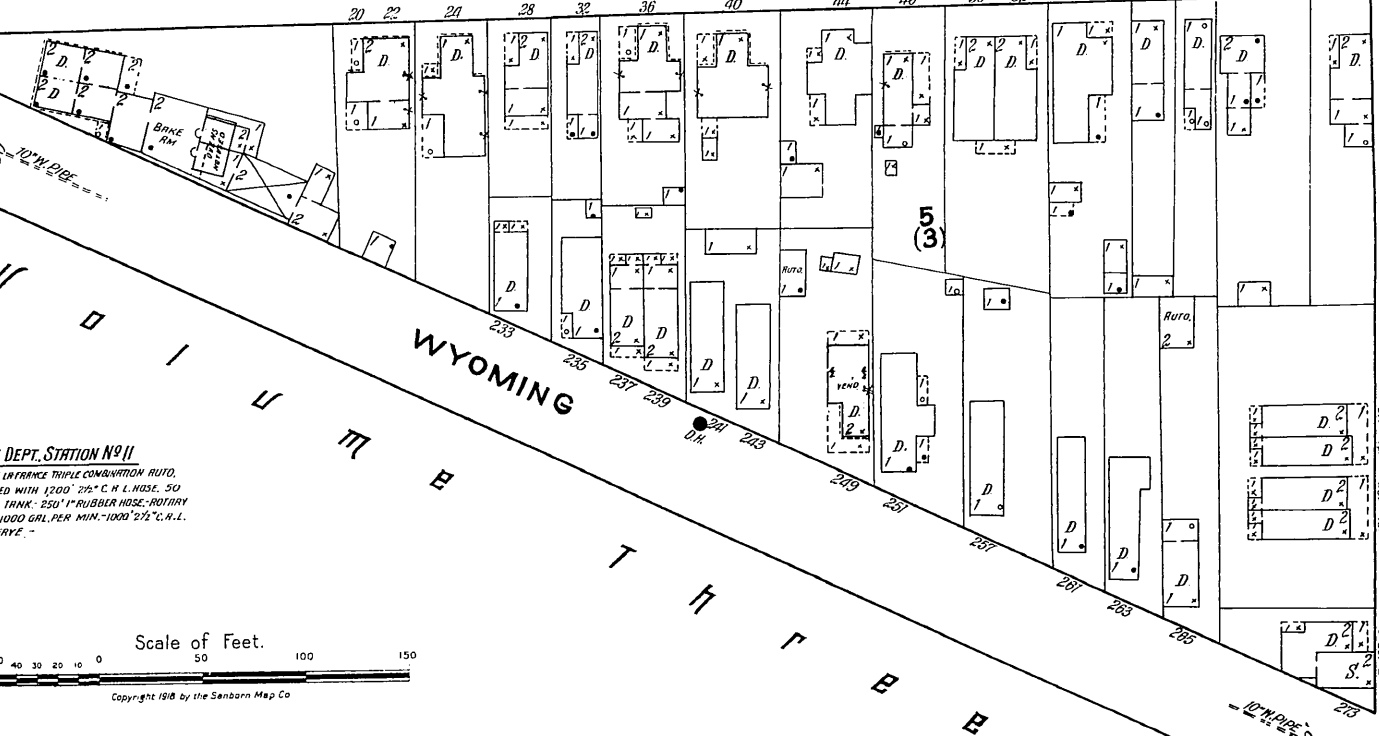
86

MAGNOLIA



PATTERSON

WYOMING



97

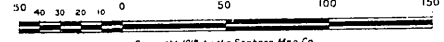
98

ALBERTA

**FIRE DEPT. STATION NO. 11**

5 MEN - AMERICAN LAFRANCE TRIPLE COMBINATION AUTO  
TRUCK, EQUIPPED WITH 1200' 2 1/2" C.H. HOSE, 50  
GAL. CHEMICAL TANK, 250' 1" RUBBER HOSE, ROTARY  
PUMP ENGINE, 1000 GAL. PER MIN. 1000' 2 1/2" C.H.L.  
HOSE IN RESERVE.

Scale of Feet.



Copyright 1918 by the Sanborn Map Co.