

92

XENIA AV.

THE CARROLL ENGINEERING CO.

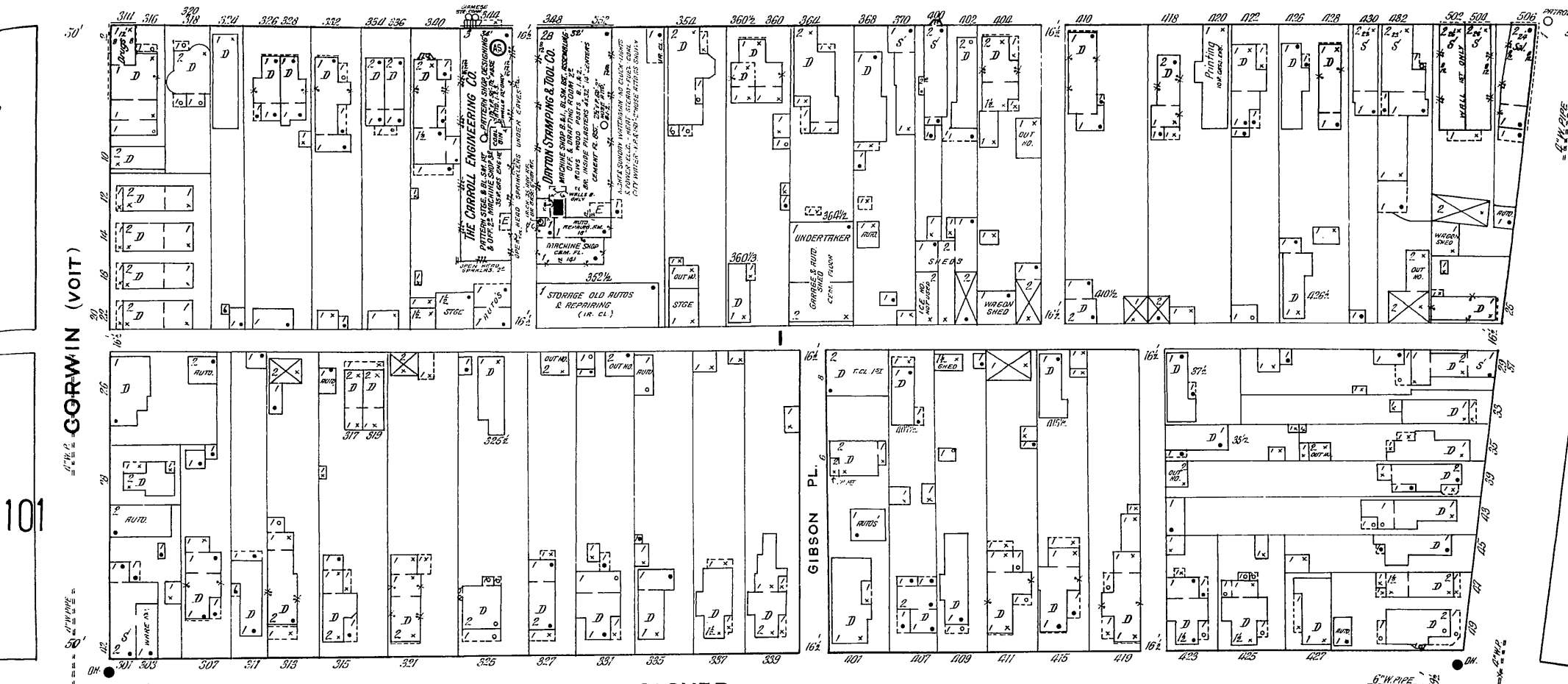
1 NIGHT SWAL & HOLIDAY WATCHMAN - ALERT PORTABLE CLOCK, 6 STATIONS, HOURLY ROUNDS
MACHINERY - LIGHTS - FLEC - HEAT - FURNACE - FUEL - COAL - ROCKWOOD AUTO SPRINKLES
WET SYSTEM - CASE SPICED 2 1/2" & 3" DRUMS - 12" CITY LUM. PRESS. TOLLS, AMMUNITION,
OUTSIDE - CITY WATER - 1 1/2" V.P. 150' - 1 1/2" W.C. 100' - 2 1/2" S.W. 100' - 2 1/2" S.W. 100'

GEORGE ST.

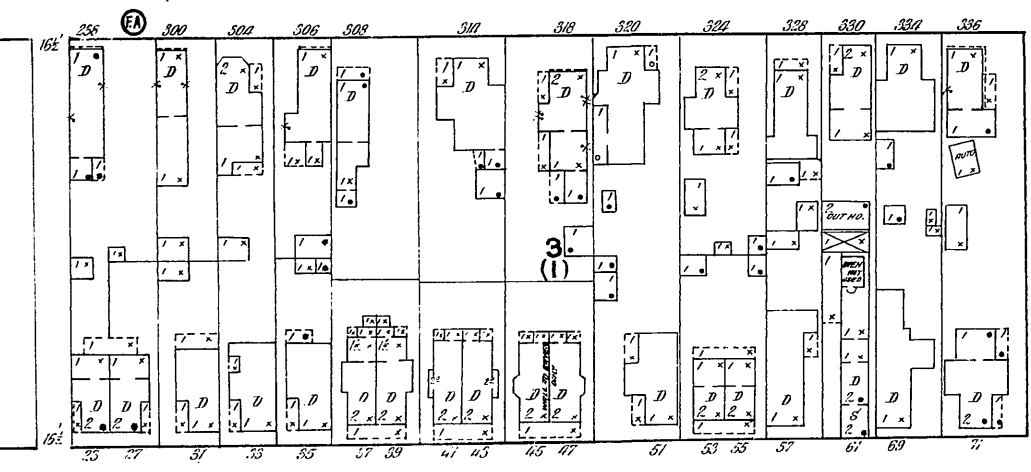
HENRY ST.

MC CLURE ST.

GORWIN (VOIT)

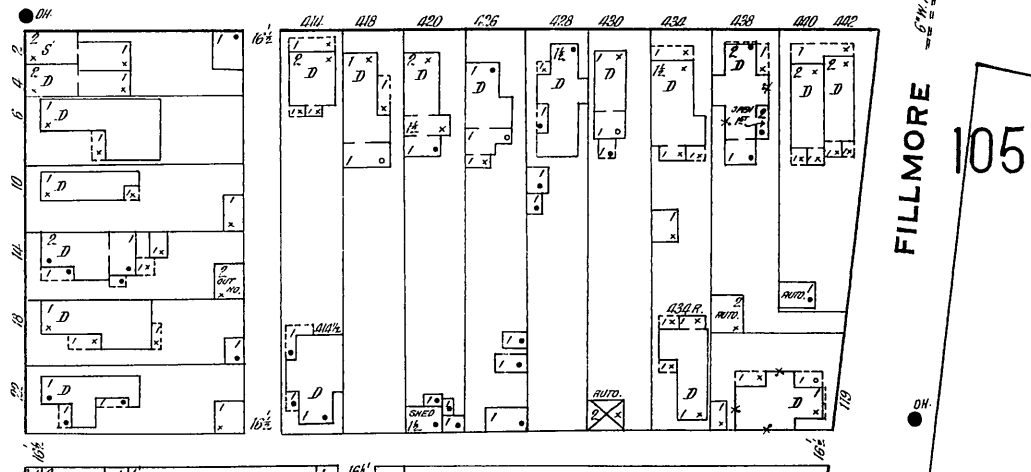


CLOVER



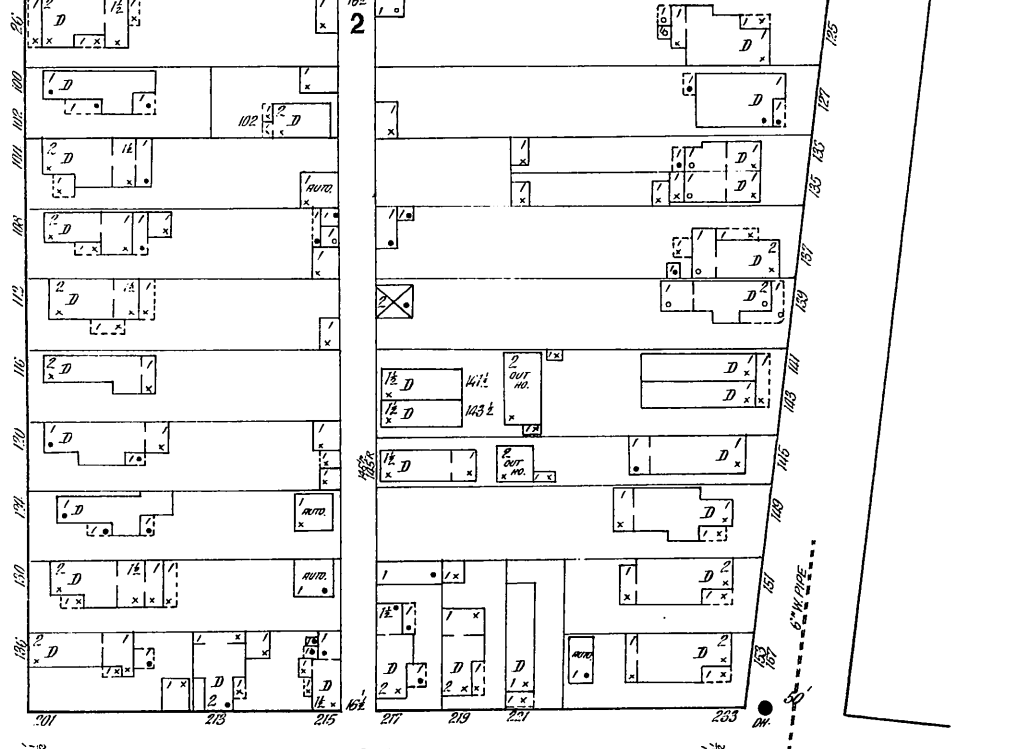
LITTLE

HAWKER



FILLMORE

105



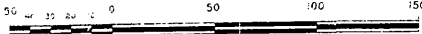
PIERCE

104

103



Scale of Feet.



Copyright 1918 by the Sanson Map Co.