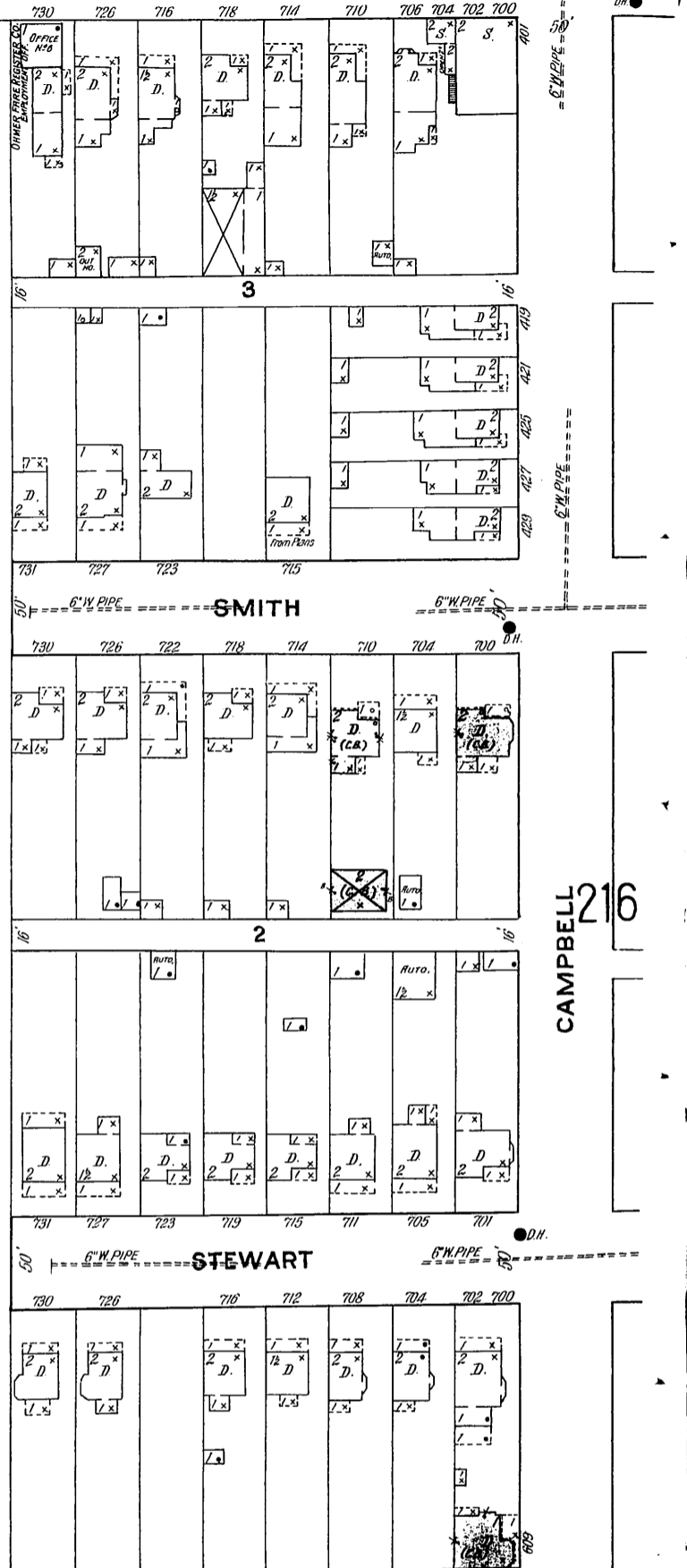
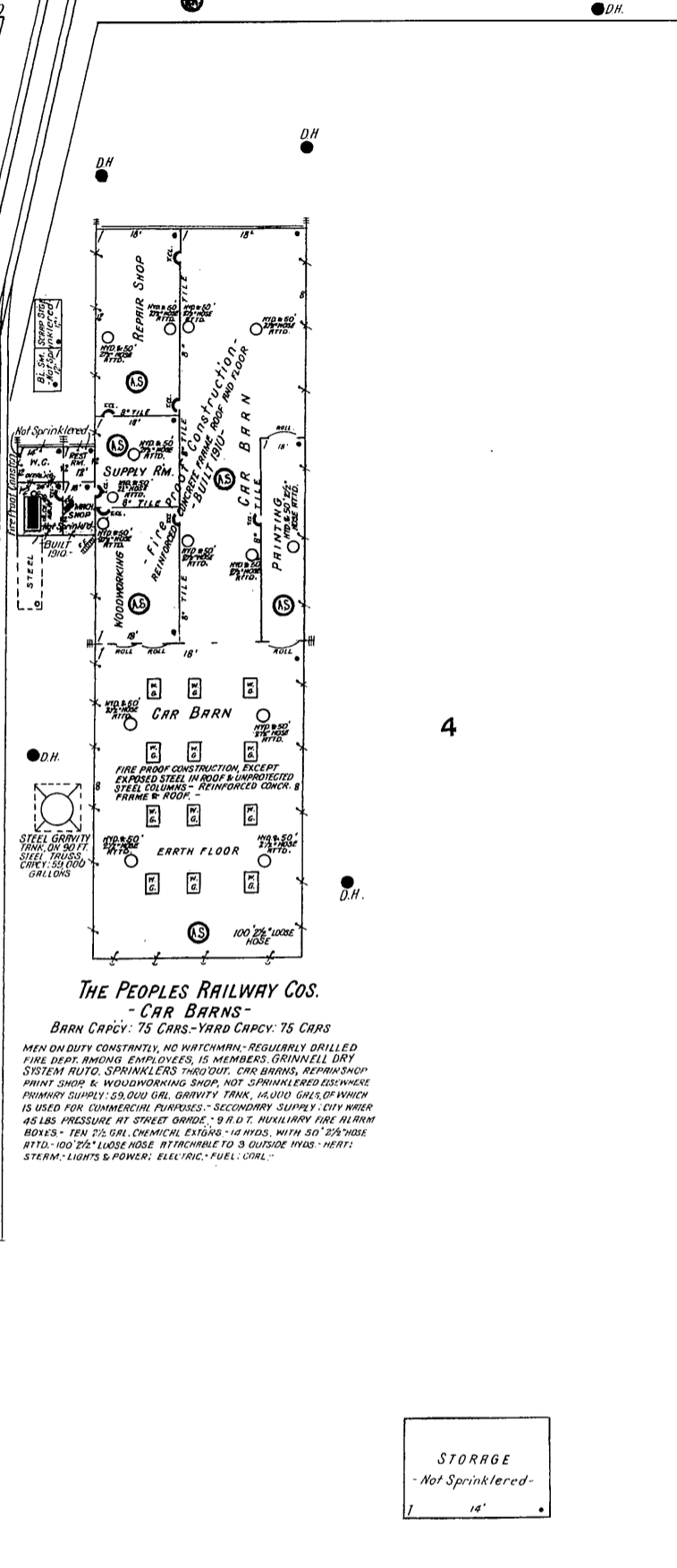
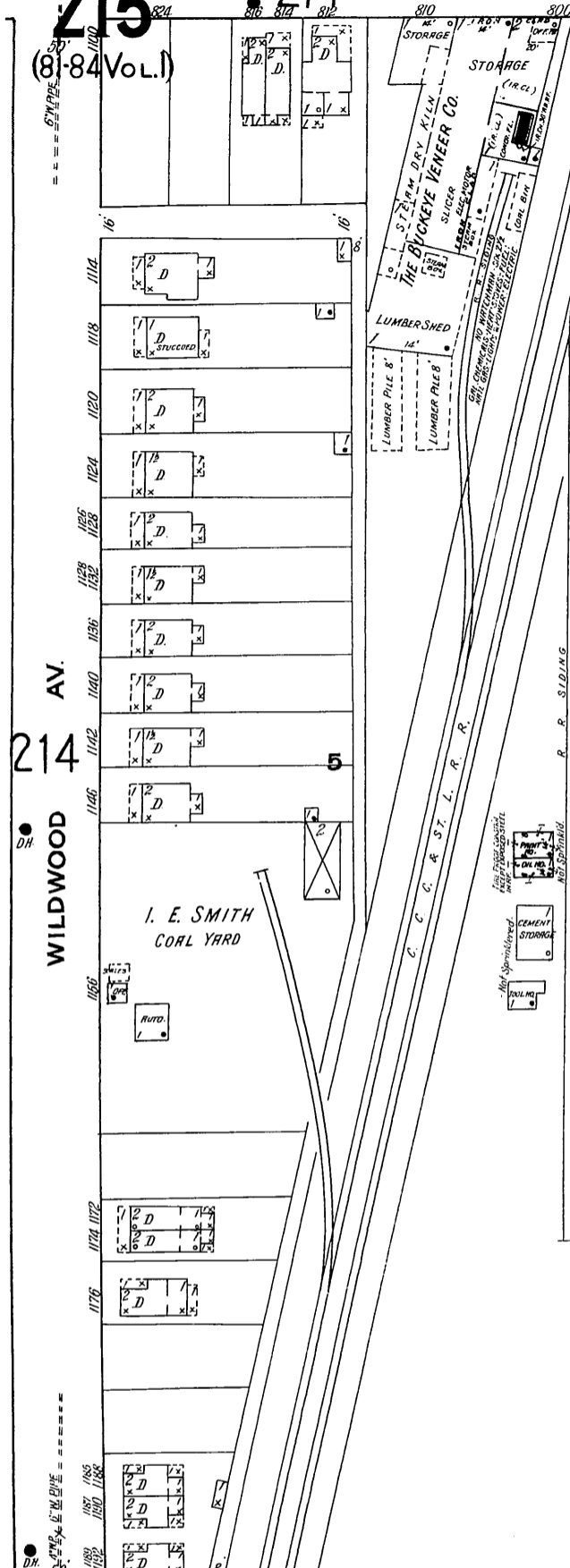


DRAYTON VOL. 2 S.W.E. 215 (81-84 Vol. I) 214 BOLANDER AV. 209



The Peoples Railway Cos.
- CAR BARN -
BARN CAPCY: 75 CARS - YARD CAPCY: 75 CARS
MEN ON DUTY CONSTANTLY, NO WATCHMAN - REGULARLY DRILLED FIRE DEPT. AMONG EMPLOYEES, IS MEMBERS GRINNELL DRY SYSTEM AUTO. SPRINKLERS THROUGHOUT. CAR BARN, REPAIR SHOP, PRINT SHOP & WOODWORKING SHOP, NOT SPRINKLERED OTHERWISE PRIMARY SUPPLY: 55,000 GAL. GRAVITY TANK, 14,000 GALS. OF WHICH IS USED FOR COMMERCIAL PURPOSES. SECONDARY SUPPLY: CITY WATER 45 LBS. PRESSURE AT STREET ORNDE. - 9 H.D.T. AUXILIARY FIRE ALARM BOXES - TEN 2 1/2 GAL. CHEMICAL EXTING. - 12 HDS. WITH 50 2 1/2\"/>

STORAGE
Not Sprinklered
14'



Scale of Feet.
50 40 30 20 10 0 50 100 50

Copyright 1919 by the Sanborn Map Co.